

Service Bulletin No: 24-002
Modification No: EC-12-0028

Ref No: 71
ATA Chapter: 24

ELECTRICAL POWER - GENERAL**DO AN INSPECTION AND ADD A PROTECTIVE SLEEVE TO THE LEFT AND RIGHT WIRE LOOMS IN THE FRONT COCKPIT ADJACENT TO FRAME 10****1. Planning Information****A. Effectivity**

PC-21 aircraft MSN 101 thru MSN 152.

This modification will be accomplished before delivery on MSNs 153 and 154.

A modification to this area on MSN155 and subsequent will prevent contact, and therefore chafing.

B. Concurrent Requirements

None.

C. Reason**(1) Problem**

Chafing has occurred between the wiring loom and the left hand side panel in the front cockpit.

(2) Cause

Investigation has shown that, although there is sufficient clearance between loom and panel on new build aircraft, it can be reduced when the side panels are removed and installed during maintenance.

(3) Solution

Do an Inspection of the left and right wires in the front cockpit adjacent to frame 10 and add a protective sleeve.

D. Description

This Service Bulletin gives the instructions and data necessary to:

- (1) Do an Inspection of the left and right wires in the front cockpit adjacent to frame 10.
- (2) Report all findings of chafing and clearances to Pilatus.
- (3) Install a protective sleeve to the left and right wires in the front cockpit adjacent to frame 10.

E. Compliance

Mandatory.

Accomplishment required not later than ninety (90) days after the effective date of this Service Bulletin.

F. Approval

The technical content of this Service Bulletin is approved under the authority of Letter of DOA Acceptance ref. FOCA. 21J.002.

PILATUS advises Operators/Owners to check with their delegated Airworthiness Authorities for any changes, local regulations or sanctions that may affect the embodiment of this Service Bulletin.

G. Copyright

© Pilatus Aircraft Ltd. This document contains proprietary information that is protected by copyright. All rights are reserved. No part of this document may be copied, reproduced or translated to other languages without the prior written consent of Pilatus Aircraft Ltd.

H. Manpower

	Man-Hours
Preparation	1.0
Inspection	1.0
Modification	0.5
Close up	1.0
TOTAL MAN-HOURS	3.5

I. Weight and Balance**(1) Weight Change**

Negligible

(2) Moment Change

Negligible

J. Electrical Load Data

Not changed.

K. Software

Not changed.

L. References

Aircraft Maintenance Manual (AMM), 00-50-00-00A-013A-A, 24-00-00-00A-012A-A, 24-00-00-00A-525A-A, 25-10-00-00A-040A-A, 95-00-00-00A-012A-A, 95-10-00-00A-520A-A, 95-10-00-00A-720A-A.

M. Publications Affected

None.

N. Interchangeability of Parts

Not applicable.

2. Material Information

A. Material - Price and Availability

Operators who require more information should contact:

PILATUS AIRCRAFT LTD,
 MANAGER, INTEGRATED LOGISTIC SUPPORT
 CH 6371 STANS, Tel: +41 41 619 66 30
 SWITZERLAND Fax: +41 41 610 33 51

Operators are requested to advise Pilatus Aircraft Ltd. of the Manufacturer's Serial Number (MSN), the flying hours and landings of aircraft which are allocated for this Service Bulletin using the Service Bulletin Evaluation Form.

Modification Kit Number	Price	Availability
500.50.21.068	Contact address above	Contact address above

B. Material Necessary for Each Aircraft

(1) Material to be Procured

Modification Kit No. 500.50.21.068 has these parts:

NEW PART NO.	DESCRIPTION	OLD PART NO.	QTY	DISP. CODE	FIG. NO.	ITEM NO.
524.60.21.248	PROTECTION SLEEVE		2		1 2	4 4

Disposition Codes: D - Discard

(2) Operator Supplied Materials (Ref. AMM, 00-50-00-00A-013A-A)

MATERIAL NO.	DESCRIPTION	QTY	REMARKS
P09-005	CABLE TIE	A/R	
P09-008	CABLE TIE	A/R	
P09-014	CABLE TIE	A/R	

C. Material Necessary for Each Spare

None

D. Re-identified Parts

None

E. Tooling - Cost and Availability

None.

3. Accomplishment Instructions

WARNING: MAKE SURE THAT BOTH EJECTION SEATS HAVE THE SAFETY PINS INSTALLED IN THE SAFE FOR SERVICING LOCATIONS AND THAT THE CFS HAS THE SAFETY PIN INSTALLED IN THE SAFE POSITION BEFORE YOU GO INTO THE COCKPIT (REF. AMM, 95-00-00-00A-012A-A).

WARNING: READ AND OBEY THE MANUFACTURERS HEALTH INSTRUCTIONS BEFORE YOU USE THE CONSUMABLE MATERIALS.

NOTE: Read and obey the manufacturers instructions about how to prepare the consumable materials before you use them.

NOTE: The electrical tool kit (P/N 990.00.02.005) is necessary to do this procedure.

A. Preparation

- (1) Do the safety procedures for the electrical power, before you do the work to the electrical power system (Ref. AMM, 24-00-00-00A-012A-A).
- (2) Remove the ejection seat from the front cockpit (Ref. AMM, 95-10-00-00A-520A-A).

B. Inspection

- (1) For the left side (Ref. Fig. 1)

NOTE: For the location of the access items in the front cockpit, refer to AMM, 25-10-00-00A-040A-A.

- (a) Measure the clearance between the lower left forward panel (3) and the cable loom (2).
- (b) Tell Pilatus the actual clearance.
- (c) Remove the lower left forward panel (3).
- (d) Locate the cable loom (2) located adjacent to FR10 (Ref Detail A).
- (e) Remove the cable ties (1), as necessary, to free the wires in the affected area.
- (f) Inspect the wires on the outside of the loom (2) for signs of chafing.
- (g) Report all wires that show signs of chafing to Pilatus. If possible, give the wire number and the position of the chafing. Take photographs if possible. Wait for instructions from Pilatus before you return the aircraft to service.

- (2) For the right side (Ref. Fig. 2)

NOTE: For the location of the access items in the front cockpit, refer to AMM, 25-10-00-00A-040A-A.

- (a) Measure the clearance between the lower left forward panel (3) and the cable loom (2).
- (b) Tell Pilatus the actual clearance.

- (c) Remove the lower right forward panel (3).
- (d) Locate the cable looms (2) located adjacent to FR10 (Ref Detail A).
- (e) Remove the cable ties (1), as necessary, to free the wires in the affected area.
- (f) Inspect the wires on the outside of the loom (2) for signs of chafing.
- (g) Report all wires that show signs of chafing to Pilatus. If possible, give the wire number and the position of the chafing. Take photographs if possible. Wait for instructions from Pilatus before you return the aircraft to service.

C. Modification

- (1) For the left side (Ref. Fig. 1):
 - (a) Open the protection sleeve (4) (P/N 524.60.21.248) and put it in position around the cable loom (2) (Refer to Detail B). Make sure there are no cable ties beneath the protection sleeve (4) (P/N 524.60.21.248).
 - (b) Wrap the protection sleeve (4) (P/N 524.60.21.248) around the wires in the cable loom (2) and keep it in position with the cable ties (1) (Material No. P09-005, Material No. P09-008, and / or Material No. P09-014).
 - (c) Make sure the ends of the cable ties (1) (Material No. P09-005, Material No. P09-008, and / or Material No. P09-014) cannot cause damage to the adjacent wires and cables.

NOTE: For the location of the access items in the front cockpit, refer to AMM, 25-10-00-00A-040A-A.

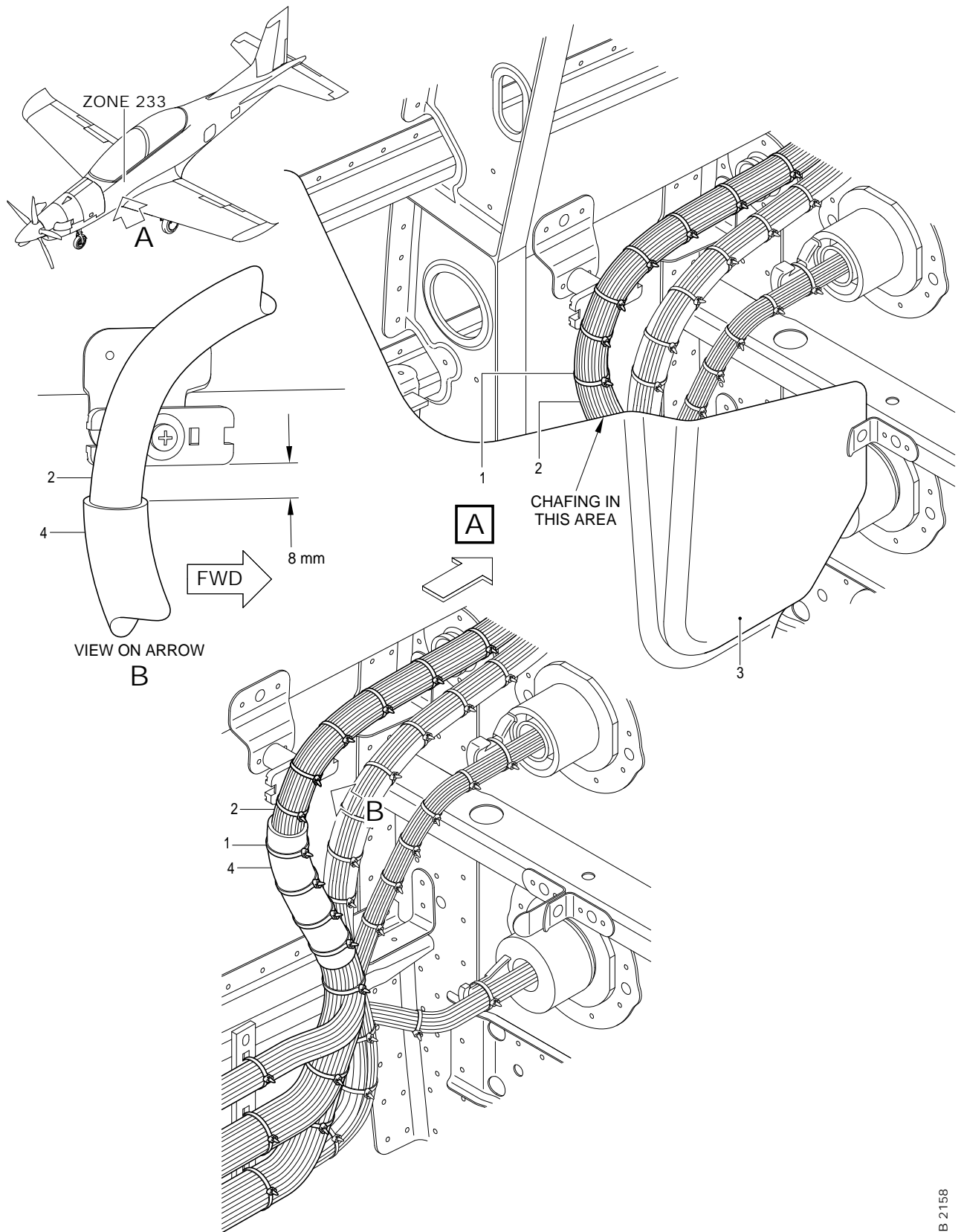
- (d) Install the lower left forward panel (3).
- (2) Do Paragraph 3.C.(1) to the right side (Ref. Fig. 2).

D. Close up

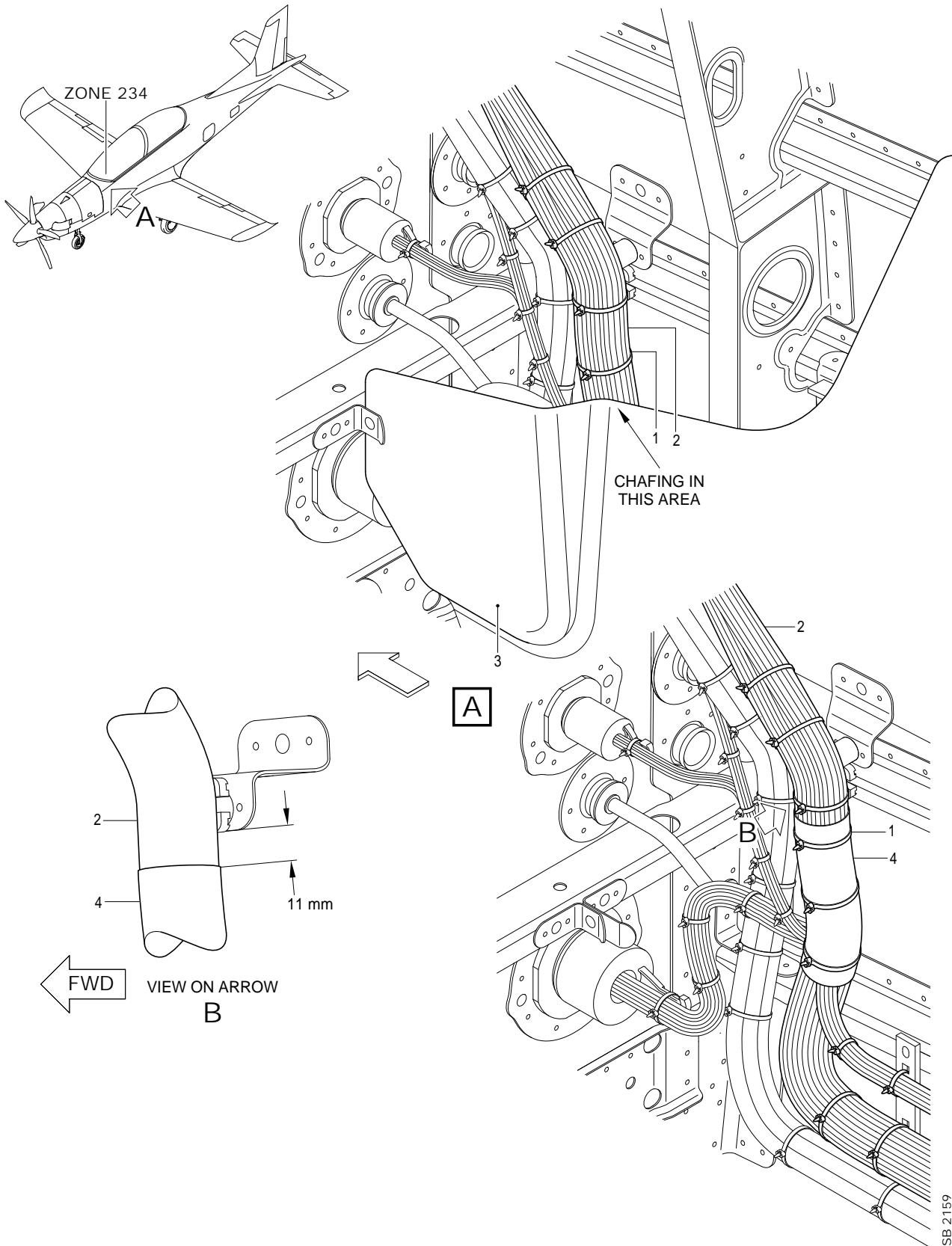
- (1) Remove all equipment, materials and tools from the work area. Make sure that the work area is clean.
- (2) Install the ejection seat in the front cockpit (Ref. AMM, 95-10-00-00A-720A-A).
- (3) Do the close up procedure for the electrical power (Ref. AMM, 24-00-00-00A-525A-A).

E. Documentation

- (1) Make an entry in the Aircraft Logbook that this Service Bulletin has been incorporated.
- (2) Use the Service Bulletin Evaluation Sheet and report your results and the serial number of the aircraft to PILATUS.



Inspection / Modification (Left Side)
Figure 1



Inspection / Modification (Right Side)
Figure 2

SERVICE BULLETIN EVALUATION SHEET FOR SB No. 24-002			
Title	Electrical Power - General Do an Inspection and Add a Protective Sleeve to the Left and Right Wire Looms in the Front Cockpit Adjacent to Frame 10		
Customer			
Service Center			
EMBODIMENT REPORTING			
This SB has been embodied:		<input type="checkbox"/>	On the entire fleet
		<input type="checkbox"/>	Only partially
Provide embodiment details per aircraft (use additional copies of this table, if necessary)			
MSN	Flying Hours	MSN	Flying Hours
Additional embodiment comments/findings			
EDITORIAL COMMENTS (procedure, kit quality, suggested improvements, etc.)			
Name	Signature	Date	
Please complete and forward this form to: Pilatus Aircraft LTD, Customer Technical Support (MCC), P.O. BOX 992, 6371 Stans, Switzerland Fax: +41 (0)41 619 6773 Email: Techsupport@pilatus-aircraft.com			

SERVICE BULLETIN EVALUATION SHEET

INTENTIONALLY BLANK