

Service Bulletin No: 34-010

Ref No: 178

Modification No: EC-21-0263, EC-22-0449

ATA Chapter: 34

**NAVIGATION - WEATHER RADAR SYSTEM
REDUNDANT WEATHER RADAR WIRING MODIFICATION****1. Planning information****A. Effectivity**

PC-24 aircraft MSN 231 thru MSN 252, MSN 254 and MSN 255.

This modification was incorporated on MSN 253, and MSN 256 thru MSN 260 during production.

This modification will be incorporated on MSN 261 and subsequent during production.

B. Concurrent requirements

None.

C. Reason**(1) Problem**

The nose wiring harness includes electrical provisions for two weather radar options (RDR-2100 and RDR-7000). All of the wires in this nose wiring harness should be installed together in a braided shielding sleeve.

On some aircraft, it has been identified that certain wires (principally those not used in the weather radar option selected) were not installed in the braided shielding sleeve, they were instead installed outside of the braided shielding sleeve. The missing shielding extends over a length of approximately 0.5 meters. At the unshielded end the wires are capped and stowed and the other ends are connected to the modules that follow:

- AGM1
- AGM2
- DGI01
- AHRS2.

A Lightning Strike event could therefore affect the functionalities related to the above modules.

(2) Solution

Disconnect and cap and stow the redundant wires that are installed outside of the braided shielding sleeve.

D. Description

This Service Bulletin gives the data and instructions necessary to:

- (1) Part 1 - Do the modification to disconnect and cap and stow the redundant wires of the RDR-2100 wiring harness.

NOTE: Part 1 of this Service Bulletin is only applicable to aircraft that have the RDR-7000 weather radar installed.

OR

- (2) Part 2 - Do the modification to disconnect and cap and stow the redundant wires of the RDR-7000 wiring harness.

NOTE: Part 2 of this Service Bulletin is only applicable to aircraft that have the RDR-2100 weather radar installed.

Revision No.1 of this Service Bulletin is issued to include:

- Additional items in the modification kit
- Additional modification instructions to include the two additional items:
 - Dummy ferrules (P/N 971.19.26.111)
 - Shrink hose (P/N 917.99.88.607).

For Operators that have accomplished this Service Bulletin at the initial issue, make sure that the dummy ferrules (P/N 971.19.26.111) and the shrink hose (P/N 917.99.88.607) are installed.

Refer to the applicable Part of this Service Bulletin:

- Part 1 - Para. **3.B.**(4)
- OR -
- Part 2 - Para. **4.B.**(6)

E. Compliance

Mandatory, no later than the next 12 month inspection.

F. Approval

The technical content of this document is approved under the authority of the DOA ref. EASA.21J.357.

Pilatus advises Operators/Owners to check with their designated Airworthiness Authority for any changes, local regulations or sanctions that may affect the embodiment of this Service Bulletin.

G. Copyright and legal statement

© Pilatus Aircraft Ltd. This document contains proprietary information that is protected by copyright. All rights are reserved. No part of this document may be copied, reproduced or translated to other languages without the prior written consent of Pilatus Aircraft Ltd.

In connection with the use of this document, Pilatus does not provide any express or implied warranties and expressly disclaims any warranty of merchantability or fitness for a particular purpose. This document contains trade secrets, confidential and/or proprietary information of Pilatus and technical data subject to export control laws and regulations, including the U.S. Export Administration Regulations (EAR). Disclosure or distribution of this document contrary to the EAR, and other laws and regulations, is strictly forbidden. The above restrictions may apply to data on all pages of this document.

H. Manpower
Accomplishment instructions - Part 1

Description	Man-Hours
Preparation	0.25
Modification	2.00
Test	4.00
Requirements after job completion	0.50
TOTAL MAN-HOURS	6.75

Accomplishment instructions - Part 2

Description	Man-Hours
Preparation	0.25
Modification	2.50
Test	6.00
Requirements after job completion	0.50
TOTAL MAN-HOURS	9.25

I. Weight and balance

- (1) Weight Change:
+0.267 lb (+0,121 kg).
- (2) Moment Change:
+11.572 lb*in (+0,133 kg*m).

J. Electrical load change data

Not changed.

K. Software

Not changed.

L. References**Aircraft Maintenance Manual (AMM):**

PC24-A-A00-50-0000-00A-070A-A	PC24-A-A06-40-0000-00A-040A-A
PC24-A-E20-10-0003-00A-913A-A	PC24-A-E20-10-0004-00A-913A-A
PC24-A-E20-20-0001-00A-040A-A	PC24-A-E24-00-0000-00A-913A-A
PC24-A-E24-97-0002-00A-320A-A	PC24-A-E24-97-0007-00A-320A-A
PC24-A-E42-10-0001-02A-520A-A	PC24-A-E42-10-0001-02A-720A-A.

M. Publications affected

Wiring Diagram Manual (WDM).

N. Interchangeability of parts

Not applicable.

2. Material information
A. Material - Price and availability

Operators that require additional information and/or Service Bulletin material can contact their authorized Pilatus Service Center, or Pilatus Customer Support on www.pilatus-aircraft.com → contact us.

NOTE: Part numbers given in this Service Bulletin are correct at the time of approval. Pilatus Aircraft Ltd reserves the right to change the part numbers as necessary. Part numbers of items delivered with a kit are correct when the kit is dispatched. This could lead to differences between those part numbers quoted in a Service Bulletin and a kit if parts are superseded. Operators are requested to check the Illustrated Parts Data (IPD) for delivered parts that differ from those listed in the Service Bulletin materials kit list.

Operators are requested to advise Pilatus Aircraft Ltd of the Manufacturers Serial Number (MSN), the flying hours and landings of aircraft that are allocated for this Service Bulletin.

B. Warranty

Credit will be issued for parts and labour for all affected aircraft on approval of a warranty claim, provided the work is accomplished by an authorized Service Center within the compliance time given in Section 1.E on Page 2 of this Service Bulletin.

C. Material necessary for each aircraft
(1) Material to order from Pilatus

Modification kit number	Price	Availability
500.50.24.042	Contact as above	Approximately 2 weeks

Modification kit number 500.50.24.042

New part No.	Description	Old part No.	Qty	Disp. code	Fig	Item
917.99.88.601	Shrink Hose, Black 3/64	-	0,50 M	N	-	-
917.99.88.604	Shrink Hose, Black 1/8	-	0,16 M	N	-	-
917.99.88.605	Shrink Hose, Black 3/16	-	0,04 M	N	-	-
971.19.38.605	Heat-shrinkable, ES Cap No. 1	-	10	N	-	-
917.99.88.607	Shrink Hose, Black, 3/8	-	0,02 M	N	-	-

Disposition Codes: D - Discard / N - New / R - Return to Pilatus / E - Exchange part

New part No.	Description	Old part No.	Qty	Disp. code	Fig	Item
971.19.26.111	Ferrule, Blank, Dummy	-	1	N	-	-
971.32.51.210	Band, clamp, ST, 6 mm (PB1021)	-	3	N	-	-
971.75.16.829	Contact, Socket, Crimp, AWG22-26 (A096-1P3, A096-2P2, A096-6P2, A096-7P3, A096-7P4)	-	13	N	-	-
971.75.17.911	Contact, Pin, #22 (PB1012, PB1021)	-	13	N	-	-
971.75.18.921	Plug, Seal, Size 22 (Filler Pin) (PB1012, PB1021)	-	13	N	-	-

Disposition Codes: D - Discard / N - New / R - Return to Pilatus / E - Exchange part

NOTE: The quantity of some items in this modification kit will include spares depending on the accomplishment of Part 1 or Part 2 of this Service Bulletin.

D. Operator supplied materials

NOTE: To identify the materials used in this procedure, look in the Consumable materials list. Refer to AMM PC24-A-A00-50-0000-00A-070A-A.

Material No.	Description	Qty	Remarks
P09-005	Cable tie (MS3367-5-9, PA66)	AR	P/N 971.32.51.105
P09-008	Cable tie (MS3367-4-9, PA66)	AR	P/N 971.32.51.104
P09-014	Cable tie (MS3397-1-9, PA66)	AR	P/N 971.32.51.101
P09-064	Tape (Silicone, Red)	AR	P/N 917.40.60.311

E. Material necessary for each spare

Not applicable.

F. Re-identified parts

Not applicable.

G. Tools and equipment

NOTE: Refer also to the referenced AMM procedures as applicable.

Tools and equipment	Recommended Pilatus part
Tool kit, electrician	Local supply
Insert and extract tool (as applicable)	Local supply
Heat gun	Local supply
Hand banding tool (Tie-dex A40199) OR	P/N 990.00.02.031
Banding tool DBS-2100 (M81306/1A)	Local supply

3. Accomplishment instructions - Part 1

Only for Aircraft with the RDR-7000 Weather Radar system installed.

WARNING: BE CAREFUL WHEN YOU DO WORK ON THE ELECTRICAL SYSTEM OR A SYSTEM THAT USES THE ELECTRICAL POWER. MAKE SURE THAT IT IS SAFE BEFORE YOU APPLY ELECTRICAL POWER TO THE AIRCRAFT OR ENERGIZE THE AIRCRAFT ELECTRICAL SYSTEMS. THE ELECTRICAL POWER CAN CAUSE INJURY TO OR KILL PERSONNEL AND CAUSE DAMAGE TO EQUIPMENT.

A. Preparation

- (1) Obey the safe maintenance practices as necessary. Refer to AMM PC24-A-E20-10-0003-00A-913A-A.
- (2) De-energize the aircraft electrical system. Refer to AMM PC24-A-E24-00-0000-00A-913A-A.
- (3) Put a **'DO NOT CONNECT ELECTRICAL POWER'** sign on the:
 - Overhead control panel
 - External power connection.
- (4) Open/Remove the access panels/fairings in Table 1. Refer to AMM PC24-A-A06-40-0000-00A-040A-A.

Table 1: Access panels/fairings

Panel number	Panel name
212AL	Nose door, LH
212AR	Nose door, RH

- (5) Remove the Modular Avionics Unit (MAU) 1 cover. Refer to AMM PC24-A-E42-10-0001-02A-520A-A.

B. Modification

NOTE: When you cap and stow wires/shields, unless otherwise stated, use shrink hose P/N 917.99.88.601 to isolate the wires, shrink Hose P/N 917.99.88.604 to isolate the shields, heat shrinkable caps (P/N 971.19.38.605) to cap all of the wires/shields together.

NOTE: When you attach cables/wires in the aircraft, use tape (Silicone red, fiberglass) (Material No. P09-064) and the applicable cable ties (Material No. P09-005/P09-008/P09-014), as necessary.

- (1) Disconnect the electrical connectors listed below:
 - Electrical connector PB1021 from the electrical receptacle JB1021
 - Electrical connector A096-2P2 from AGM 1 on the MAU 1
 - Electrical connector A096-6P2 from DGIO 1 on the MAU 1
 - Electrical connector A096-7P4 from DGIO 1 on the MAU 1.
- (2) Disconnect/Open the backshell on each of the electrical connectors listed above.
- (3) Use the applicable insert/extract tool and disconnect the wires from the electrical connector PB1021. Refer to Figure 1, and Figure 2 - Hook-Up Chart 1 (Line 1 thru 4):
 - (a) Disconnect the blue wire of cable SM4B22 from terminal 17 of the electrical connector PB1021.
 - (b) Disconnect the trace wire of cable SM4B22 from terminal 18 of the electrical connector PB1021.
 - (c) Disconnect the shield wire of cable SM4B22 from terminal 19 of the electrical connector PB1021.
 - (d) Install a new contact (P/N 971.75.17.911) and a seal plug (filler pin) (P/N 971.75.18.921) in each of the terminals where you disconnected the wires.
 - (e) Remove (and discard) the band clamp and disconnect the cable shield of cable SM4B22 from the backshell of the electrical connector PB1021.
 - (f) Use a new band clamp (P/N 971.32.51.210) and connect all of the remaining cable shield(s)/shield wire(s) to the backshell of the electrical connector PB1021.
 - (g) Connect the backshell to the electrical connector PB1021.
 - (h) Cap the wires that you disconnected and stow them on the wiring harness near the electrical connector PB1021.
- (4) Use the applicable insert/extract tool and disconnect the wires from the electrical connector A096-2P2. Refer to Figure 1, and Figure 2 - Hook-Up Chart 1 (Line 5 thru 8):
 - (a) Disconnect the blue wire of cable SM4C22 from terminal 19 of the electrical connector A096-2P2.
 - (b) Disconnect the wire SM4G22 from terminal 20 of the electrical connector A096-2P2.

- (c) Disconnect the wire SM4H22 from terminal 21 of the electrical connector A096-2P2.
 - (d) Disconnect the cable shield of cable SM4C22 from the backshell of the electrical connector A096-2P2.
 - (e) Install a blind contact (P/N 971.75.16.829) in each of the terminals where you disconnected the wires.
 - (f) Install a dummy ferrule (P/N 971.19.26.111) in the empty hole in the backshell of the electrical connector A096-2P2.
 - (g) Close the backshell of the electrical connector A096-2P2.
 - (h) Cap the wires that you disconnected and stow them on the wiring harness near the electrical connector A096-2P2.
- 1 Use shrink hose (P/N 917.99.88.607) on the ferrule and solder shield.
- (5) Use the applicable insert/extract tool and disconnect the wires from the electrical connector A096-6P2. Refer to Figure 1, and Figure 2 - Hook-Up Chart 1 (Line 9 thru 11):
 - (a) Disconnect the red wire of cable SM6A24 from terminal 22 of the electrical connector A096-6P2.
 - (b) Disconnect the blue wire of cable SM6A24 from terminal 23 of the electrical connector A096-6P2.
 - (c) Disconnect the cable shield of cable SM6A24 from the backshell of the electrical connector A096-6P2.
 - (d) Install a blind contact (P/N 971.75.16.829) in each of the terminals where you disconnected the wires.
 - (e) Close the backshell of the electrical connector A096-6P2.
 - (f) Cap the wires that you disconnected and stow them on the wiring harness near the electrical connector A096-6P2.
 - (6) Use the applicable insert/extract tool and disconnect the wires from the electrical connector A096-7P4. Refer to Figure 1, and Figure 2 - Hook-Up Chart 1 (Line 12 thru 14):
 - (a) Disconnect the red wire of cable SM7A24 from terminal 22 of the electrical connector A096-7P4.
 - (b) Disconnect the blue wire of cable SM7A24 from terminal 23 of the electrical connector A096-7P4.
 - (c) Disconnect the cable shield of cable SM7A24 from the backshell of the electrical connector A096-7P4.
 - (d) Install a blind contact (P/N 971.75.16.829) in each of the terminals where you disconnected the wires.
 - (e) Close the backshell of the electrical connector A096-7P4.

- (f) Cap the wires that you disconnected and stow them on the wiring harness near the electrical connector A096-7P4.
- (7) Connect the electrical connectors listed below:
 - Electrical connector PB1021 to the electrical receptacle JB1021
 - Electrical connector A096-2P2 to AGM 1 on the MAU 1
 - Electrical connector A096-6P2 to DGIO 1 on the MAU 1
 - Electrical connector A096-7P4 to DGIO 1 on the MAU 1.
 - Torque the jack screws of the electrical connectors A096-2P2 / A096-6P2 / A096-7P4 to between 40 and 44 in-lb (4,5 and 5,0 Nm) plus the rundown torque. Refer to AMM PC24-A-E20-20-0001-00A-040A-A.

C. Test

- (1) Remove the '**DO NOT CONNECT ELECTRICAL POWER**' sign from the:
 - Overhead control panel
 - External power connection.
- (2) Do the Connection PB/JB1021 - Operation test. Refer to AMM PC24-A-E24-97-0007-00A-320A-A.

D. Requirements after job completion

- (1) De-energize the aircraft electrical system. Refer to AMM PC24-A-E24-00-0000-00A-913A-A.
- (2) Install the MAU 1 cover. Refer to AMM PC24-A-E42-10-0001-02A-720A-A.
- (3) Remove all the equipment, tools and materials from the work area. Make sure that the work area is clean.
- (4) Close/Install the access panels/fairings in Table 2. Refer to AMM PC24-A-A06-40-0000-00A-040A-A.

Table 2: Access panels/fairings

Panel number	Panel name
212AL	Nose door, LH
212AR	Nose door, RH

- (5) Do the Closeup practices. Refer to AMM PC24-A-E20-10-0004-00A-913A-A.

E. Documentation

- (1) Make an entry in the Aircraft Logbook to record the incorporation of Part 1 of this Service Bulletin.
- (2) Make sure that the Aircraft Logbook shows any new Pilatus Part Number(s) and/or Serial Number(s), as applicable.
- (3) Inform CAMP of the incorporation of Part 1 of this Service Bulletin and any new Pilatus Part Number(s) and/or Serial Number(s), as applicable. Send the completed feedback sheet to: fax@campsystems.com

4. Accomplishment instructions - Part 2

Only for Aircraft with the RDR-2100 Weather Radar system installed.

WARNING: BE CAREFUL WHEN YOU DO WORK ON THE ELECTRICAL SYSTEM OR A SYSTEM THAT USES THE ELECTRICAL POWER. MAKE SURE THAT IT IS SAFE BEFORE YOU APPLY ELECTRICAL POWER TO THE AIRCRAFT OR ENERGIZE THE AIRCRAFT ELECTRICAL SYSTEMS. THE ELECTRICAL POWER CAN CAUSE INJURY TO OR KILL PERSONNEL AND CAUSE DAMAGE TO EQUIPMENT.

A. Preparation

- (1) Obey the safe maintenance practices as necessary. Refer to AMM PC24-A-E20-10-0003-00A-913A-A.
- (2) De-energize the aircraft electrical system. Refer to AMM PC24-A-E24-00-0000-00A-913A-A.
- (3) Put a '**DO NOT CONNECT ELECTRICAL POWER**' sign on the:
 - Overhead control panel
 - External power connection.
- (4) Open/Remove the access panels/fairings in Table 3. Refer to AMM PC24-A-A06-40-0000-00A-040A-A.

Table 3: Access panels/fairings

Panel number	Panel name
212AL	Nose door, LH
212AR	Nose door, RH

- (5) Remove the Modular Avionics Unit (MAU) 1 cover. Refer to AMM PC24-A-E42-10-0001-02A-520A-A.

B. Modification

NOTE: When you cap and stow wires/shields, use shrink hose P/N 917.99.88.601 to isolate the wires, shrink Hose P/N 917.99.88.603 to isolate the shields, heat shrinkable caps (P/N 971.19.38.605) to cap all of the wires/shields together.

NOTE: When you attach cables/wires in the aircraft, use tape (Silicone red, fiberglass) (Material No. P09-064) and the applicable cable ties (Material No. P09-005/P09-008/P09-014), as necessary.

- (1) Disconnect the electrical connectors listed below:
 - Electrical connector PB1021 from the electrical receptacle JB1021
 - Electrical connector PB1012 from the electrical receptacle JB1012
 - Electrical connector A096-7P3 from DGIO 1 on the MAU 1
 - Electrical connector A096-1P3 from AGM 1 on the MAU 1.
- (2) Disconnect/Open the backshell on each of the electrical connectors listed above.
- (3) Use the applicable insert/extract tool and disconnect the wires from the electrical connector PB1021. Refer to Figure 3, and Figure 4 - Hook-Up Chart 2 (Line 1 thru 11):
 - (a) Disconnect the red wire of cable SM28B24 from terminal 41 of the electrical connector PB1021.
 - (b) Disconnect the blue wire of cable SM28B24 from terminal 42 of the electrical connector PB1021.
 - (c) Remove (and discard) the band clamp and disconnect the cable shield of cable SM28B24 from the backshell of the electrical connector PB1021.
 - (d) Disconnect the red wire of cable SM29B24 from terminal 124 of the electrical connector PB1021.
 - (e) Disconnect the red/black wire of cable SM29B24 from terminal 125 of the electrical connector PB1021.
 - (f) Disconnect the blue wire of cable SM29B24 from terminal 126 of the electrical connector PB1021.
 - (g) Disconnect the blue/black wire of cable SM29B24 from terminal 127 of the electrical connector PB1021.
 - (h) Remove the cable shield of cable SM29B24 from the backshell of the electrical connector PB1021.
 - (i) Disconnect the red wire of cable SM30A24 from terminal 120 of the electrical connector PB1021.
 - (j) Disconnect the blue wire of cable SM30A24 from terminal 121 of the electrical connector PB1021.
 - (k) Remove the cable shield of cable SM30A24 from the backshell of the electrical connector PB1021.

- (l) Install a new contact (P/N 971.75.17.911) and a seal plug (filler pin) (P/N 971.75.18.921) in each of the terminals where you disconnected the wires.
- (m) Use a new band clamp (P/N 971.32.51.210) and connect all of the remaining cable shield(s)/shield wire(s) to the backshell of the electrical connector PB1021.
- (n) Connect the backshell to the electrical connector PB1021.
- (o) Cap the wires that you disconnected and stow them on the wiring harness near the electrical connector PB1021.

NOTE: For cable SM29B24, use shrink Hose P/N 917.99.88.605 to isolate the shield. Do not use shrink hose P/N 917.99.88.604.

- (4) Use the applicable insert/extract tool and disconnect the wires from the electrical connector PB1012. Refer to Figure 3, and Figure 4 - Hook-Up Chart 2 (Line 12 thru 14):
 - (a) Disconnect the red wire of cable SM32A24 from terminal 100 of the electrical connector PB1012.
 - (b) Disconnect the blue wire of cable SM32A24 from terminal 101 of the electrical connector PB1012.
 - (c) Remove (and discard) the band clamp and disconnect the cable shield of cable SM32A24 from the backshell of the electrical connector PB1012.
 - (d) Install a new contact (P/N 971.75.17.911) and a seal plug (filler pin) (P/N 971.75.18.921) in each of the terminals where you disconnected the wires.
 - (e) Use a new band clamp (P/N 971.32.51.210) and connect all of the remaining cable shield(s)/shield wire(s) to the backshell of the electrical connector PB1012.
 - (f) Connect the backshell to the electrical connector PB1012.
 - (g) Cap the wires that you disconnected and stow them on the wiring harness near the electrical connector PB1012.
- (5) Use the applicable insert/extract tool and disconnect the wires from the electrical connector A096-7P3. Refer to Figure 3, and Figure 4 - Hook-Up Chart 2 (Line 15 thru 17):
 - (a) Disconnect the red wire of cable SM35A24 from terminal 45 of the electrical connector A096-7P3.
 - (b) Disconnect the blue wire of cable SM35A24 from terminal 46 of the electrical connector A096-7P3.
 - (c) Disconnect the cable shield of cable SM35A24 from the backshell of the electrical connector A096-7P3.
 - (d) Install a blind contact (P/N 971.75.16.829) in each of the terminals where you disconnected the wires.
 - (e) Close the backshell of the electrical connector A096-7P3.
 - (f) Cap the wires that you disconnected and stow them on the wiring harness near the electrical connector A096-7P3.

- (6) Use the applicable insert/extract tool and disconnect the wires from the electrical connector A096-1P3. Refer to Figure 3, and Figure 4 - Hook-Up Chart 2 (Line 18 thru 22):
- (a) Disconnect the red wire of cable SM37A24 from terminal 20 of the electrical connector A096-1P3.
 - (b) Disconnect the red/black wire of cable SM37A24 from terminal 61 of the electrical connector A096-1P3.
 - (c) Disconnect the blue wire of cable SM37A24 from terminal 62 of the electrical connector A096-1P3.
 - (d) Disconnect the blue/black wire of cable SM37A24 from terminal 19 of the electrical connector A096-1P3.
 - (e) Disconnect the cable shield of cable SM37A24 from the backshell of the electrical connector A096-1P3.
 - (f) Install a blind contact (P/N 971.75.16.829) in each of the terminals where you disconnected the wires.
 - (g) Install a dummy ferrule (P/N 971.19.26.111) in the empty hole in the backshell of the electrical connector A096-1P3.
 - (h) Close the backshell of the electrical connector A096-1P3.
 - (i) Cap the wires that you disconnected and stow them on the wiring harness near the electrical connector A096-1P3.
 - 1 Use shrink Hose P/N 917.99.88.605 to isolate the shield. Do not use shrink hose P/N 917.99.88.604.
 - 2 Use shrink hose (P/N 917.99.88.607) on the ferrule and solder shield.
- (7) Connect the electrical connectors listed below:
- Electrical connector PB1021 from the electrical receptacle JB1021
 - Electrical connector PB1012 from the electrical receptacle JB1012
 - Electrical connector A096-7P3 from DGIO 1 on the MAU 1
 - Electrical connector A096-1P3 from AGM 1 on the MAU 1.
 - Torque the jack screws of the electrical connectors A096-7P3 / A096-1P3 to between 40 and 44 in-lb (4,5 and 5,0 Nm) plus the rundown torque. Refer to AMM PC24-A-E20-20-0001-00A-040A-A.

C. Test

- (1) Remove the '**DO NOT CONNECT ELECTRICAL POWER**' sign from the:
 - Overhead control panel
 - External power connection.
- (2) Do the Connection PB/JB1012 - Operation test. Refer to AMM PC24-A-E24-97- 0002-00A-320A-A.
- (3) Do the Connection PB/JB1021 - Operation test. Refer to AMM PC24-A-E24-97-0007-00A-320A-A.

D. Requirements after job completion

- (1) De-energize the aircraft electrical system. Refer to AMM PC24-A-E24-00-0000-00A-913A-A.
- (2) Install the MAU 1 cover. Refer to AMM PC24-A-E42-10-0001-02A-720A-A.
- (3) Remove all the equipment, tools and materials from the work area. Make sure that the work area is clean.
- (4) Close/Install the access panels/fairings in Table 4. Refer to AMM PC24-A-A06-40-0000-00A-040A-A.

Table 4: Access panels/fairings

Panel number	Panel name
212AL	Nose door, LH
212AR	Nose door, RH

- (5) Do the Closeup practices. Refer to AMM PC24-A-E20-10-0004-00A-913A-A.

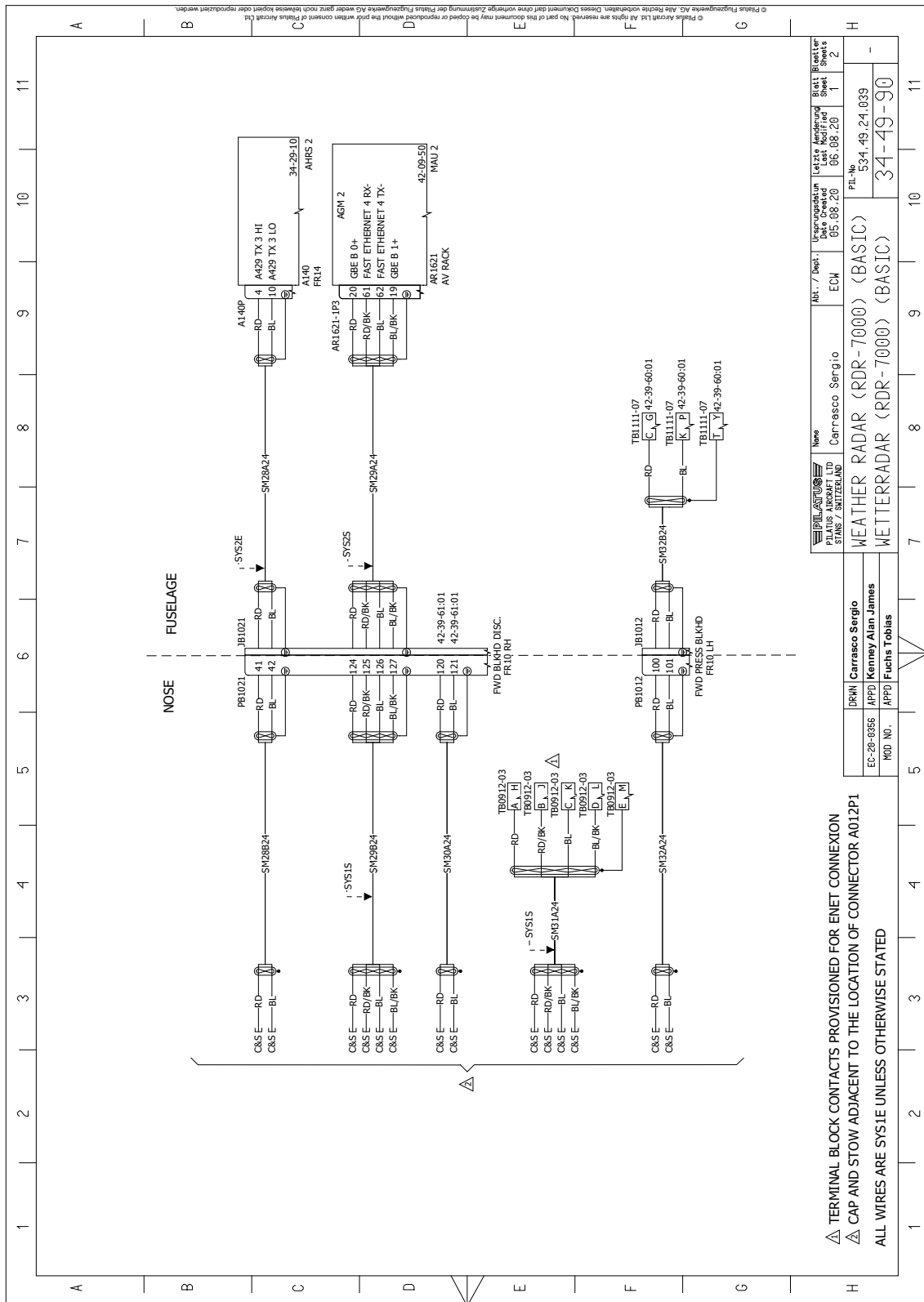
E. Documentation

- (1) Make an entry in the Aircraft Logbook to record the incorporation of Part 2 of this Service Bulletin.
- (2) Make sure that the Aircraft Logbook shows any new Pilatus Part Number(s) and/or Serial Number(s), as applicable.
- (3) Inform CAMP of the incorporation of Part 2 of this Service Bulletin and any new Pilatus Part Number(s) and/or Serial Number(s), as applicable. Send the completed feedback sheet to: fax@campsystems.com

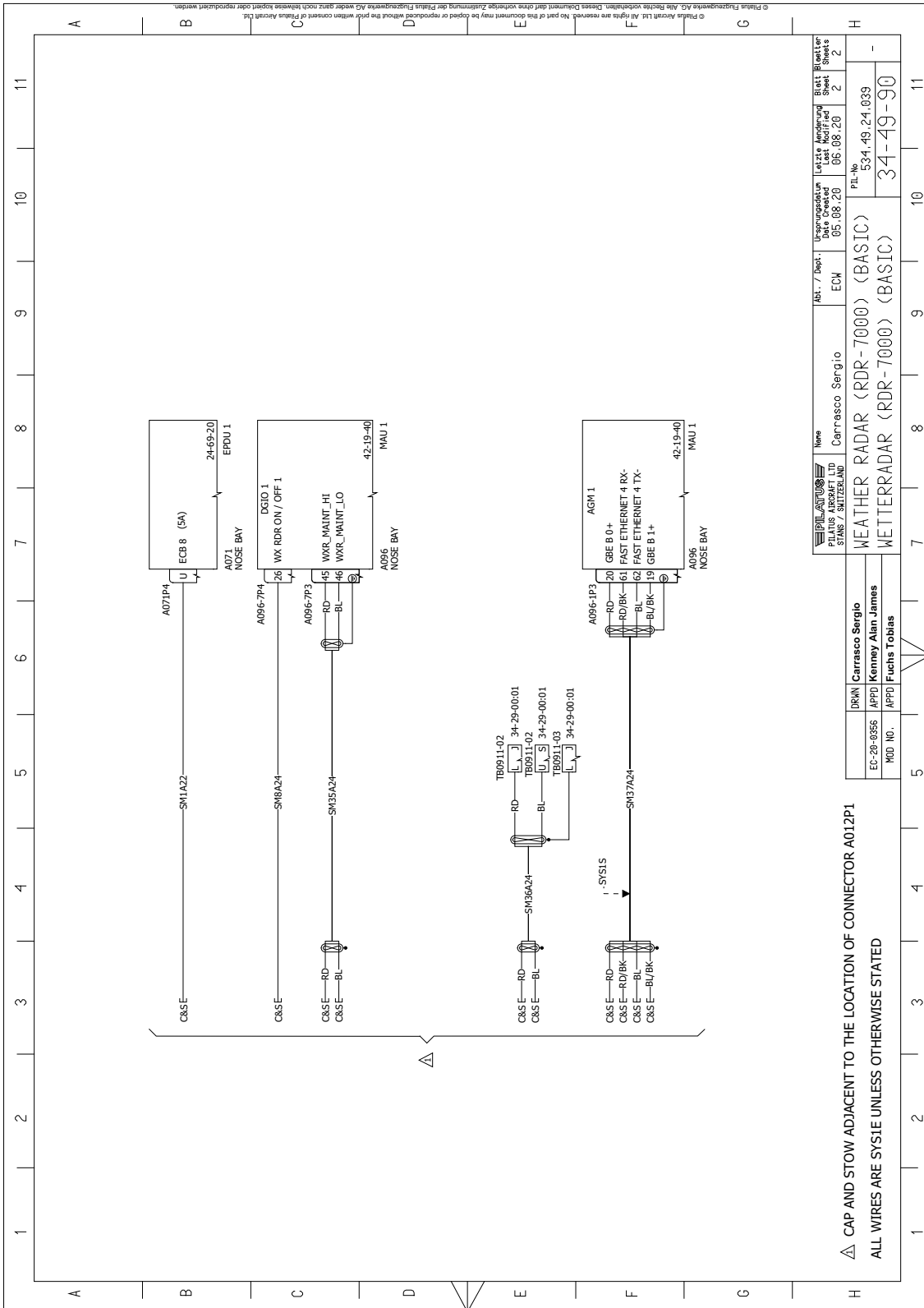
Line	End 1			Color	Cable/Wire No.	End 2			Remarks
	Ident. No.	Terminal No.	Contact P/N			Contact P/N	Terminal No.	Ident. No.	
1	TB0911-12	H	-	BL	SM4B22	-	17	PB1021	Disconnect End 2 (See Note 1)
2	TB0911-12	J	-	TR	SM4B22	-	18	PB1021	Disconnect End 2 (See Note 1)
3	TB0911-12	K	-	Shield Wire	SM4B22	-	19	PB1021	Disconnect End 2 (See Note 1)
4	TB0911-12	L	-	Cable Shield	SM4B22	-	Backshell	PB1021	Disconnect End 2 (See Note 1)
5	TB0911-12	R	-	BL	SM4C22	-	19	A096-2P2	Disconnect End 2 (See Note 1)
6	TB0911-12	S	-	TR	SM4C22/ SM4G22	-	20	A096-2P2	Disconnect End 2 (See Note 1)
7	TB0911-12	T	-	TR	SM4C22/ SM4H22	-	21	A096-2P2	Disconnect End 2 (See Note 1)
8	TB0911-12	U	-	Cable Shield	SM4C22	-	Backshell	A096-2P2	Disconnect End 2 (See Note 1)
9	-	-	-	RD	SM6A24	-	22	A096-6P2	Disconnect End 2 (See Note 1)
10	-	-	-	BL	SM6A24	-	23	A096-6P2	Disconnect End 2 (See Note 1)
11	-	-	-	Cable Shield	SM6A24	-	Backshell	A096-6P2	Disconnect End 2 (See Note 1)
12	-	-	-	RD	SM7A24	-	22	A096-7P4	Disconnect End 2 (See Note 1)
13	-	-	-	BL	SM7A24	-	23	A096-7P4	Disconnect End 2 (See Note 1)
14	-	-	-	Cable Shield	SM7A24	-	Backshell	A096-7P4	Disconnect End 2 (See Note 1)

Note 1: Cap and stow the wire.

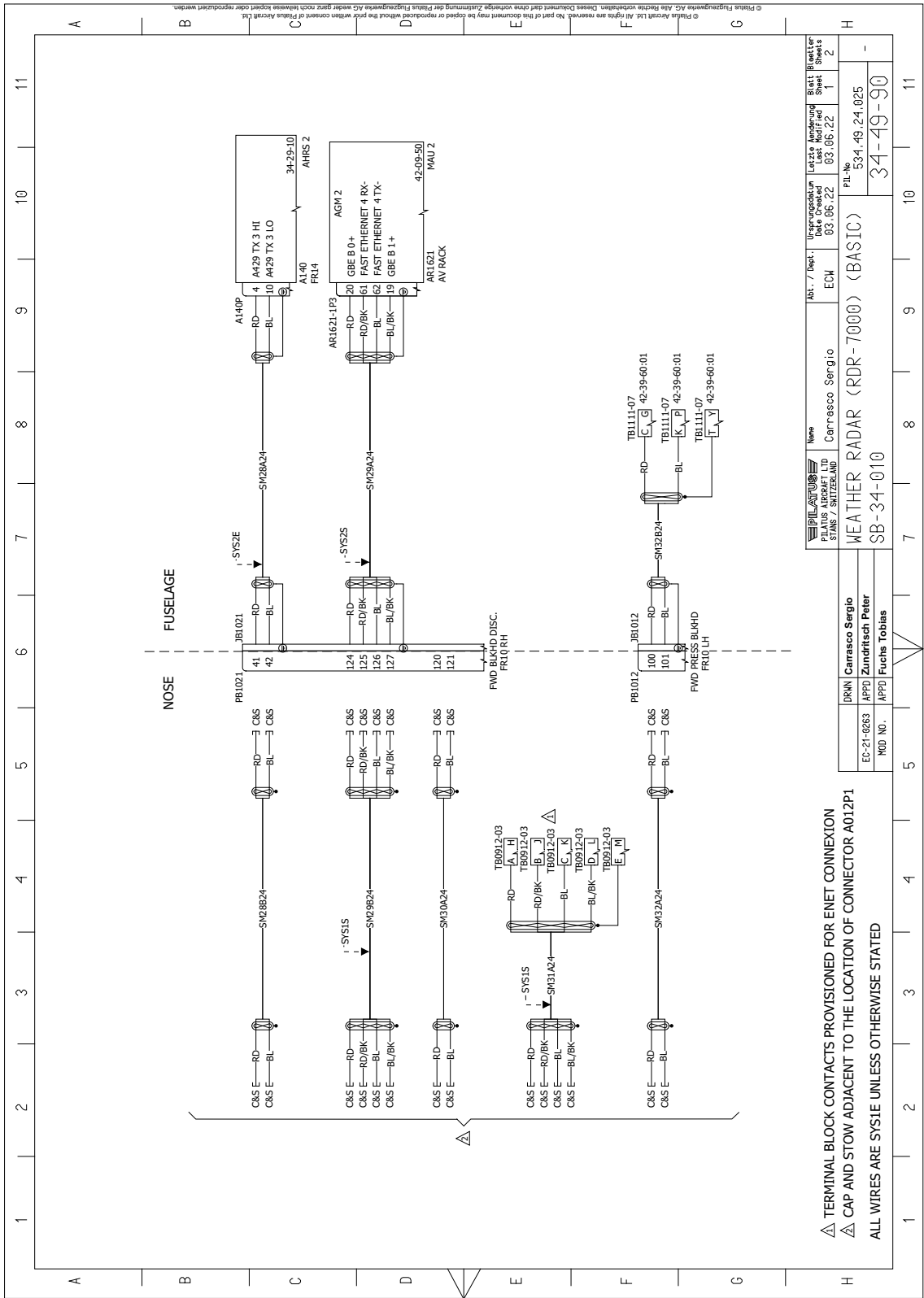
Part 1 - Hook-Up Chart 1
Figure 2



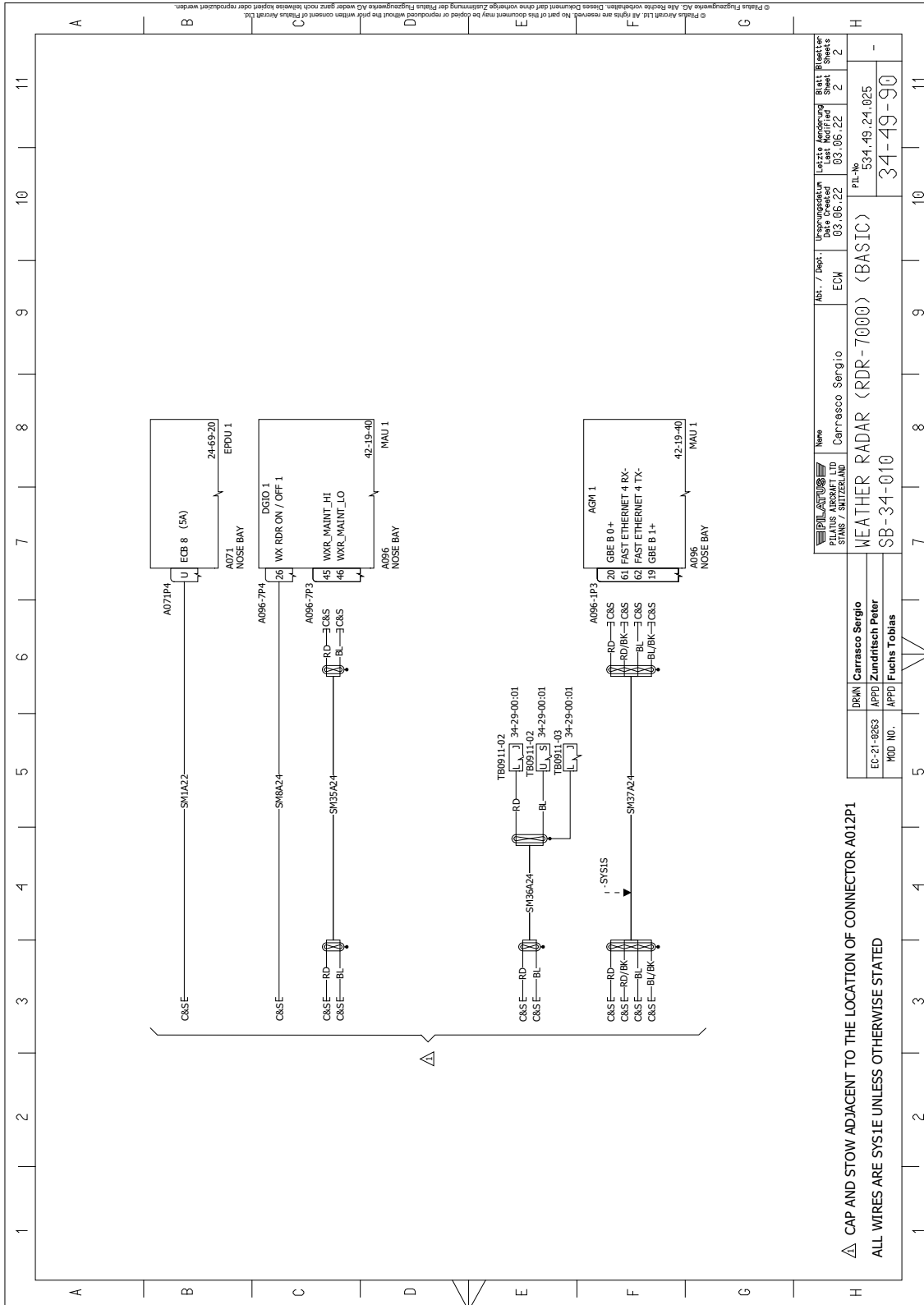
Part 2 - Wiring Diagram 34-49-90 - Weather Radar (RDR-7000) (Pre Service Bulletin)
 Figure 3 (Sheet 1 of 4)



Part 2 - Wiring Diagram 34-49-90 - Weather Radar (RDR-7000) (Pre Service Bulletin)
Figure 3 (Sheet 2 of 4)



Part 2 - Wiring Diagram 34-49-90 - Weather Radar (RDR-7000) (Post Service Bulletin)
Figure 3 (Sheet 3 of 4)



DRM	Carrasco Sergio	Abt. / Dept.	ECM	Ursprungsdatum	03.06.22	Letzte Änderung	03.06.22	Blatt / Seite	2 / 2
MOD. NO.	APPD Zundritsch Peter	WEATHER RADAR (RDR-7000) (BASIC)		PIL-№	534-49-24.025	34-49-90			
	APPD Fuchs Tobias	SB-34-010							

Part 2 - Wiring Diagram 34-49-90 - Weather Radar (RDR-7000) (Post Service Bulletin)
Figure 3 (Sheet 4 of 4)

Line	End 1			Cable/Wire No.	Color	End 2			Remarks
	Ident. No.	Terminal No.	Contact P/N			Contact P/N	Terminal No.	Ident. No.	
1	-	-	-	SM28B24	RD	-	41	PB1021	Disconnect End 2 (See Note 1)
2	-	-	-	SM28B24	BL	-	42	PB1021	Disconnect End 2 (See Note 1)
3	-	-	-	SM28B24	Cable Shield	-	Backshell	PB1021	Disconnect End 2 (See Note 1)
4	-	-	-	SM29B24	RD	-	124	PB1021	Disconnect End 2 (See Note 1)
5	-	-	-	SM29B24	RD/BK	-	125	PB1021	Disconnect End 2 (See Note 1)
6	-	-	-	SM29B24	BL	-	126	PB1021	Disconnect End 2 (See Note 1)
7	-	-	-	SM29B24	BL/BK	-	127	PB1021	Disconnect End 2 (See Note 1)
8	-	-	-	SM29B24	Cable Shield	-	Backshell	PB1021	Disconnect End 2 (See Note 1)
9	-	-	-	SM30A24	RD	-	120	PB1021	Disconnect End 2 (See Note 1)
10	-	-	-	SM30A24	BL	-	121	PB1021	Disconnect End 2 (See Note 1)
11	-	-	-	SM30A24	Cable Shield	-	Backshell	PB1021	Disconnect End 2 (See Note 1)
12	-	-	-	SM32A24	RD	-	100	PB1012	Disconnect End 2 (See Note 1)
13	-	-	-	SM32A24	BL	-	101	PB1012	Disconnect End 2 (See Note 1)
14	-	-	-	SM32A24	Cable Shield	-	Backshell	PB1012	Disconnect End 2 (See Note 1)

Note 1: Cap and stow the wire.

Part 2 - Hook-Up Chart 2
Figure 4 (Sheet 1 of 2)

Line	End 1			Cable/Wire No.	Color	End 2			Remarks
	Ident. No.	Terminal No.	Contact P/N			Contact P/N	Terminal No.	Ident. No.	
15	-	-	-	SM35A24	RD	-	45	A096-7P3	Disconnect End 2 (See Note 1)
16	-	-	-	SM35A24	BL	-	46	A096-7P3	Disconnect End 2 (See Note 1)
17	-	-	-	SM35A24	Cable Shield	-	Backshell	A096-7P3	Disconnect End 2 (See Note 1)
18	-	-	-	SM37A24	RD	-	20	A096-1P3	Disconnect End 2 (See Note 1)
19	-	-	-	SM37A24	RD/BK	-	61	A096-1P3	Disconnect End 2 (See Note 1)
20	-	-	-	SM37A24	BL	-	62	A096-1P3	Disconnect End 2 (See Note 1)
21	-	-	-	SM37A24	BL/BK	-	19	A096-1P3	Disconnect End 2 (See Note 1)
22	-	-	-	SM37A24	Cable Shield	-	Backshell	A096-1P3	Disconnect End 2 (See Note 1)

Note 1: Cap and stow the wire.

Part 2 - Hook-Up Chart 2
Figure 4 (Sheet 2 of 2)

Feedback Sheet for the Accomplishment of SB 34-010

The purpose of this feedback sheet is to provide CAMP with the current information on each individual PC-24 aircraft. Please complete the grey cells as appropriate using black ink and block letters.

Print out and send the completed feedback sheet to: fax@campsystems.com

Aircraft MSN		Aircraft Registration		Total Airframe Hours	
Owner				Total Landings	
Operator					
Service Center					

SB Accomplishment Information

We have embodied/accomplished this SB		<input type="checkbox"/>	Fully	<input type="checkbox"/>	Partially
<input type="checkbox"/>	Part 1	<input type="checkbox"/>	Part 2		
The undersigned confirms the accomplishment of this Service Bulletin					
Date of accomplishment		Name		Signature	
<p>Comments (procedure, kit quality, suggested improvements etc.)</p>					

Feedback Sheet

INTENTIONALLY BLANK