

SERVICE BULLETIN

SERVICE BULLETIN NO: PC7-A73-002

REF NO: 067

MODIFICATION NO:

ATA CHAPTER: 73

POWER CONTROL SUPPORTING STRUT ASSEMBLY - CRACKING

1. Planning Information

A. Effectivity

(1) All PC-7 Aircraft up to and including MSN 580.

B. Reason

Fatigue cracks have been found on some Power Control Supporting Struts. The struts were cracked at the weld on the HP fuel pump support attachment lug and radially around the strut tube.

Investigation has shown that the cracks were limited to a small number of struts and the problem is not a significant one.

C. Description

This Service Bulletin revision calls for the supporting strut to be inspected in accordance with the Accomplishment Instructions, at intervals of 100 flying hours.

D. Compliance

Mandatory - do the following procedures as applicable:

- (i) If no cracks were found during the inspection procedure, repeat the accomplishment instructions of this SB after every 100 flying hours.
- (ii) If a crack is found during the inspection procedure the aircraft must be modified to SB 73-003 standard.

E. Approval

The technical aspects of this Service Bulletin have been approved by the Federal Office for Civil Aviation (FOCA) of Switzerland as an Airworthiness Directive.

≡PILATUS≡
PC-7
SERVICE BULLETIN

F. Manpower

Manhours

TOTAL MANHOURS

0.5 (Inspection only)

ELAPSED TIME (HOURS)

0.5 (Inspection only)

G. Material - Cost and Availability

Not Applicable.

H. Tooling

None.

I. Weight and Balance

Not Affected.

J. References

IPC 73-20-01 Fig 1, Item 40 or IPC 71-00-01 Fig 7, Item 5 (depending on installation).
Service Bulletin PC-7 73-001 - Introduction of Electro-Mechanical Override on FCU.

≡PILATUS≡
PC-7
SERVICE BULLETIN

2. Accomplishment Instructions

A. Preparation

- (1) Open access panel ENG 3R.
- (2) Clean the area around the HP fuel pump support attachment lug on the support strut. Use a clean lint-free cloth made moist with white spirit.

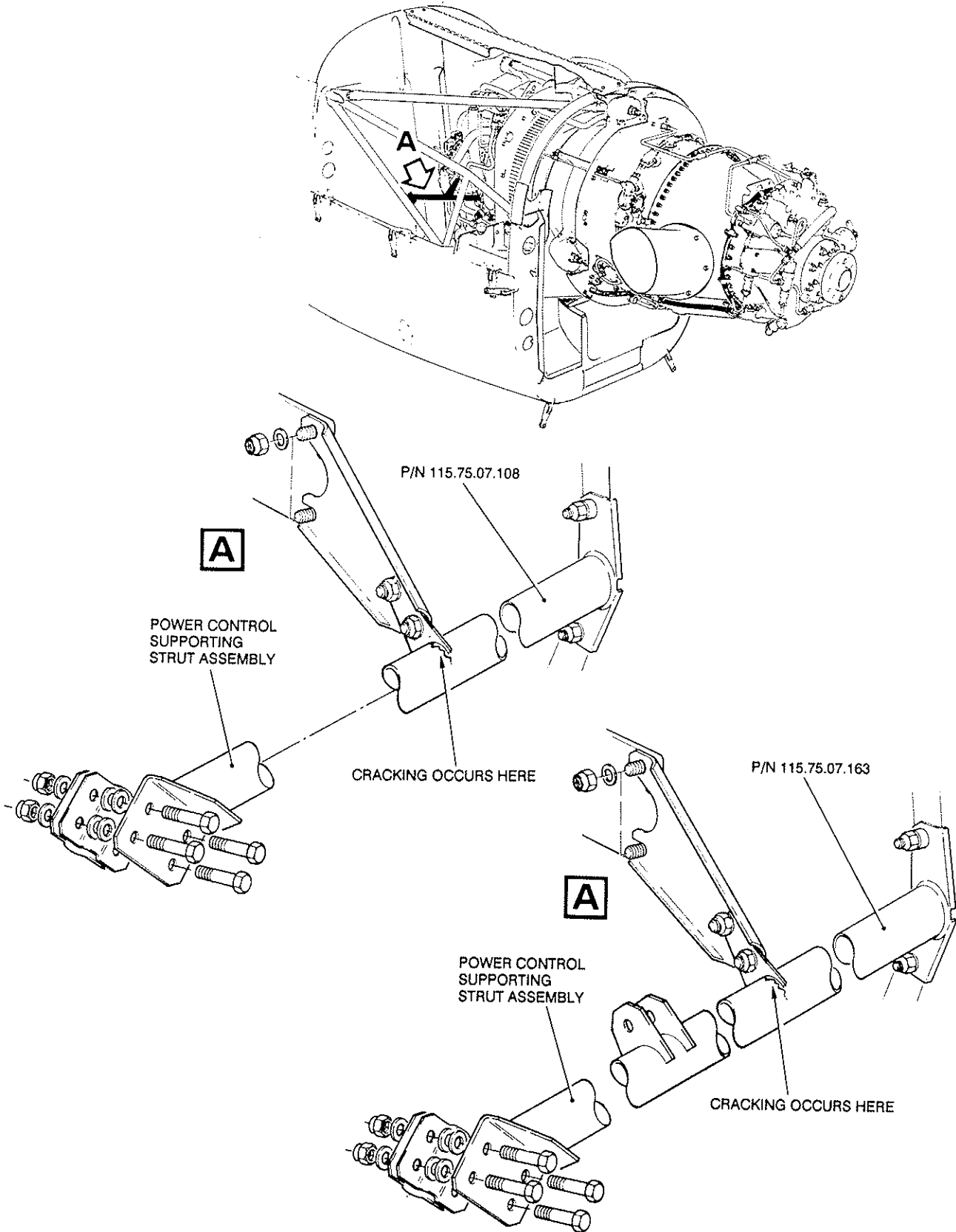
B. Inspection (Ref.Fig.1)

- (1) Inspect the weld and the tube structure around the weld for cracks. Use a torch and mirror. - If cracks are found, SB 73-003 must be incorporated before the next flight.

C. Close up

- (1) Close access panel ENG 3R.

PILATUS
PC-7
SERVICE BULLETIN



Power Control Supporting Strut - Inspection
Figure 1