

Service Bulletin No: 91-001
Modification No: EC-19-0553

Ref No: 88
ATA Chapter: 91

**AIR VEHICLE WIRING - GENERAL
IMPROVEMENTS TO THE AIRCRAFT ELECTRICAL HARNESS INSTALLATION**

1. Planning information

A. Effectivity

PC-24 aircraft MSN 101 thru MSN 160.

This modification will be incorporated on MSN 161 and subsequent during production.

B. Concurrent requirements

None.

C. Reason

To improve the electrical harness installation, at various locations throughout the aircraft, to prevent the possibility of the electrical harness chafing on the structure and/or moving parts.

D. Description

This Service Bulletin gives the data and instructions necessary to improve the electrical harness installation in the:

- Nose bay
- Cockpit
- Fuselage
- Wing fairing
- Rear fuselage.

E. Compliance

Mandatory.

At the next Annual Inspection.

F. Approval

The technical content of this Service Bulletin is approved under the authority of DOA No. EASA. 21J. 357.

Pilatus advises Operators/Owners to check with their designated Airworthiness Authority for any changes, local regulations or sanctions that may affect the embodiment of this Service Bulletin.

G. Copyright and legal statement

© Pilatus Aircraft Ltd. This document contains proprietary information that is protected by copyright. All rights are reserved. No part of this document may be copied, reproduced or translated to other languages without the prior written consent of Pilatus Aircraft Ltd.

In connection with the use of this document, Pilatus does not provide any express or implied warranties and expressly disclaims any warranty of merchantability or fitness for a particular purpose. This document contains trade secrets, confidential and/or proprietary information of Pilatus and technical data subject to export control laws and regulations, including the U.S. Export Administration Regulations (EAR). Disclosure or distribution of this document contrary to the EAR, and other laws and regulations, is strictly forbidden. The above restrictions may apply to data on all pages of this document.

H. Manpower

Description	Man-Hours
Preparation	05.00
Modification	10.00
Requirements after job completion	05.00
TOTAL MAN-HOURS	20.00

NOTE: Man-hours do not include the time necessary to cure sealants, paints and adhesives.

I. Weight and balance

Not changed.

J. Electrical load change data

Not changed.

K. Software

Not changed.

L. References

Aircraft Maintenance Manual (AMM):

PC24-A-A00-50-0000-00A-070A-A	PC24-A-A06-40-0000-00A-040A-A
PC24-A-A07-10-0000-00A-172A-A	PC24-A-E20-10-0003-00A-913A-A
PC24-A-E20-10-0004-00A-913A-A	PC24-A-E20-20-0001-00A-040A-A
PC24-A-E24-00-0000-00A-913A-A	PC24-A-E24-30-0003-00A-520A-A
PC24-A-E24-30-0003-00A-720A-A	PC24-A-E25-10-0001-00A-520A-A
PC24-A-E25-10-0001-00A-720A-A	PC24-A-E46-30-0001-00A-520A-A
PC24-A-E46-30-0001-00A-720A-A	PC24-A-E53-10-0002-00A-520A-A
PC24-A-E53-10-0002-00A-720A-A.	

M. Publications affected

Illustrated Parts Data (IPD).

N. Interchangeability of parts

Not applicable.

2. Material information
A. Material - Price and availability

Operators that require additional information and/or Service Bulletin material can contact their authorized Pilatus Service Center, or Pilatus Customer Support on www.pilatus-aircraft.com → contact us.

NOTE: Part numbers given in this Service Bulletin are correct at the time of approval. Pilatus Aircraft Ltd. reserves the right to change the part numbers as necessary. Part numbers of items delivered with a kit are correct when the kit is dispatched. This could lead to differences between those part numbers quoted in a Service Bulletin and a kit if parts are superseded. Operators are requested to check the Illustrated Parts Data (IPD) for delivered parts that differ from those listed in the Service Bulletin materials kit list.

Operators are requested to advise Pilatus Aircraft Ltd. of the Manufacturer's Serial Number (MSN), the flying hours and landings of aircraft that are allocated for this Service Bulletin.

B. Warranty

Credit will be issued for parts and labour for all affected aircraft on approval of a warranty claim, provided the work is accomplished by an authorized Service Center within 12 months of the issue date of this Service Bulletin.

C. Material necessary for each aircraft

Modification kit number	Price	Availability
500.50.24.060	Contact as above	Approximately 1 to 2 weeks

(1) Material to order from Pilatus

Modification kit number 500.50.24.060

New part No.	Description	Old part No.	Qty	Disp. code	Fig	Item
527.30.21.167	Spacer	-	1	N	1	5
557.10.21.563	Roll	-	1	N	2	7
591.60.12.015	Bush, Distance	-	1	N	2	13
932.35.10.117	Screw, Hex, ST, CD-PL, 4.8*27.0	-	1	N	1	7
		932.35.10.109	1	D	1	2
935.63.11.046	Screw, Pan HD, ST, CD-PL, 3.5*22.2	-	1	N	2	12
		935.63.11.040	1	D	2	8

Disposition Codes: D - Discard / N - New / R - Return to Pilatus / E - Exchange part

New part No.	Description	Old part No.	Qty	Disp. code	Fig	Item
935.63.31.118	Screw, Pan HD, ST, CD-PL, 4.8*29.4	-	1	N	2	6
		935.63.31.107	1	D	2	3
946.31.05.808	Clamp, Loop, Cush, AL, CR, 12.7	-	1	N	1	20
		946.31.05.804	1	D	1	8
971.31.18.527	Terminal Lug, Yellow	-	1	N	1	23
		971.31.18.527	1	D	1	16
971.32.18.106 (See Note)	Harness, Spacer	-	3	N	1 5	21 13
971.32.18.108	Cable, Spacer, Cross, CSCS-M	-	4	N	2 5	14 3, 4, 7
971.32.18.122	Saddle	-	1	N	1	6
971.32.18.251	Cable Mount, Glass-Pei	-	4	N	5	14, 16
971.32.18.255	Cable Mount, Glass-Epoxid, PA	-	1	N	1	22
917.59.37.536	Rubber, U-Sect, CR, 15*3*1MM	-	0,10 M	N	3 5	4 20
917.96.92.152	Protection Sleeve, 2000NX-8-5	-	0,15 M	N	3 5	9 22
917.96.92.154	Protection Sleeve, 2000NX-19-5	-	0,26 M	N	2 3	19 6, 12
917.96.92.155	Protection Sleeve, 2000NX-25-5	-	0,12 M	N	1	27

Disposition Codes: D - Discard / N - New / R - Return to Pilatus / E - Exchange part

NOTE: Some of the quantities given are extra to use as necessary or to keep as spares.

(2) Additional material to procure

New part No.	Description	Old part No.	Qty	Disp. code	Fig	Item
938.07.65.105	Nut, Hex, SLFLKG, Ring Base, M8*1	-	1	N	1	14
		-	1	D	1	14

Disposition Codes: D - Discard / N - New / R - Return to Pilatus

D. Operator supplied materials

NOTE: Use cable ties as applicable for wire/cable looms. Refer to AMM, PC24-A-A00-50-0000-00A-070A-A:

Material No.	Description	Qty	Remarks
P01-010	Solvent	AR	-
P02-031	Absorbent paper	AR	-
P04-041	Aeroshell grease 58	AR	-
P08-080	Adhesive (3M Scotch-Weld 10)	AR	P/N 910.42.22.041 (For edge protection)
P08-084	Adhesive (2 part CB200)	AR	P/N 910.42.62.004 (For cable mount)
P09-005	Cable tie (MS3367-5-9, PA66)	AR	P/N 971.32.51.105
P09-008	Cable tie (MS3367-4-9, PA66)	AR	P/N 971.32.51.104
P09-014	Cable tie (MS3367-1-9, PA66)	AR	P/N 971.32.51.101
P09-064	Tape (Silicone red, fiberglass)	AR	P/N 917.40.60.311

E. Material necessary for each spare

Not applicable.

F. Re-identified parts

Not applicable.

G. Tools and equipment

Tools and equipment	Recommended Pilatus part
Tool kit, mechanic	Local supply
Tool kit, electrician	Local supply
Clamp (or equivalent)	Local supply
Crimping tool (as applicable)	Local supply

3. Accomplishment instructions

WARNING: BE CAREFUL WHEN YOU DO WORK ON THE ELECTRICAL SYSTEM OR A SYSTEM THAT USES THE ELECTRICAL POWER. MAKE SURE THAT IT IS SAFE BEFORE YOU APPLY ELECTRICAL POWER TO THE AIRCRAFT OR ENERGIZE THE AIRCRAFT ELECTRICAL SYSTEMS. THE ELECTRICAL POWER CAN CAUSE INJURY TO OR KILL PERSONNEL AND CAUSE DAMAGE TO EQUIPMENT.

WARNING: MAKE SURE THAT YOU WEAR AN ELECTROSTATIC WRIST-BAND WHEN YOU DO WORK ON AN ELECTROSTATIC SENSITIVE DEVICE. AN ELECTROSTATIC DISCHARGE CAN CAUSE INJURY TO PERSONNEL AND/OR DAMAGE TO EQUIPMENT.

WARNING: BE CAREFUL WHEN YOU USE THE CONSUMABLE MATERIALS. OBEY THE MANUFACTURERS' HEALTH AND SAFETY INSTRUCTIONS.

CAUTION: Make sure that the electrostatic discharge wrist-band is correctly attached to a ground point. The modular avionics unit is an electrostatic sensitive device. Electrostatic discharge can cause damage to equipment.

A. Preparation

- (1) Obey the safe maintenance practices as necessary. Refer to AMM, PC24-A-E20-10-0003-00A-913A-A.
- (2) De-energize the aircraft electrical system. Refer to AMM, PC24-A-E24-00-0000-00A-913A-A.
- (3) Lift the aircraft on jacks. Refer to AMM, PC24-A-A07-10-0000-00A-172A-A.
- (4) Put "**AIRCRAFT ON JACKS**" signs around the aircraft.
- (5) Put a "**DO NOT CONNECT ELECTRICAL POWER**" sign on the:
 - Overhead control panel
 - External power connection.

NOTE: A minimum of two persons are necessary to remove the crew seats.

- (6) Remove the pilot and copilot crew seat. Refer to AMM, PC24-A-E25-10-0001-00A-520A-A.
- (7) Remove the pilot Primary Flight Display (PFD). Refer to AMM, PC24-A-E46-30-0001-00A-520A-A.
- (8) Remove the six screws and remove the inner avionics rack door.
- (9) Remove the necessary equipment to get sufficient access in the avionics rack. Refer to the AMM for the applicable procedure.

- (10) Open/Remove the access panels/fairings in Table 1. Refer to AMM, PC24-A-A06-40-0000-00A-040A-A and PC24-A-E53-10-0002-00A-520A-A.

Table 1: Access panels/fairings to be opened/removed

Panel number	Panel name
133BLF	Floor panel (19-22 MID)
133DLF	Floor panel (22-25 MID)
141BL	Panel, wing fairing FWD aft, LH
143BBL	Panel, MLG bay aft, wing fairing, LH
143BBR	Panel, MLG bay aft, wing fairing, RH
143DBL	Panel, bottom, LH
143DBR	Panel, bottom, RH
212AL	Nose door LH
212AR	Nose door RH
221AZ	Connection panel sidewall frame 10 LH
221BZ	Lower sidewall panel LH
221CZ	Trim panel lower sidewall LH
221PZ	Connection panel sidewall frame 10 RH
221QZ	Lower sidewall panel 1 RH
221RZ	Trim panel lower sidewall 1 RH
221SZ	Trim panel lower sidewall RH AFT
331AB	Skin panel, FWD, lower LH
341AB	Skin panel, FWD, lower RH

B. Modification - Nose bay. Refer to Figure 1

WARNING: MAKE SURE THAT YOU WEAR AN ELECTROSTATIC WRIST-BAND WHEN YOU DO WORK ON AN ELECTROSTATIC SENSITIVE DEVICE. AN ELECTROSTATIC DISCHARGE CAN CAUSE INJURY TO PERSONNEL AND/OR DAMAGE TO EQUIPMENT.

CAUTION: Make sure that the electrostatic discharge wrist-band is correctly attached to a ground point. The modular avionics unit is an electrostatic sensitive device. Electrostatic discharge can cause damage to equipment.

(1) Improvement to prevent the electrical harness from chafing on a screw head. Refer to Figure 1 (Sheet 2)



Reference: NOSE01

In front of the pressure bulkhead, FR 10, below the circuit breaker panel (PNL0913), at the aft cover plate:

WARNING: BE CAREFUL WHEN YOU USE THE CONSUMABLE MATERIALS. OBEY THE MANUFACTURERS' HEALTH AND SAFETY INSTRUCTIONS.

- (a) Cut and remove the cable ties, as necessary, from the electrical harness (1) to get sufficient access to install the new spacer (5) (P/N 527.30.21.167) and the new saddle (6) (P/N 971.32.18.122).
- (b) Remove the screw (2) and the washer (3) from the aft cover plate (4). Discard the screw (2) and the washer (3).
- (c) Apply a thin layer of aeroshell grease 58 (Material No. P04-041) on the threads of the new screw (7) (P/N 932.35.10.117).
- (d) Loosely install the new spacer (5) (P/N 527.30.21.167), the new saddle (6) (P/N 971.32.18.122) and the new screw (7) on the aft cover plate (4). Make sure that the saddle (6) is correctly orientated for the cable tie installation.
- (e) Torque the screw (7) plus the run-down torque. Refer to AMM, PC24-A-E20-20-0001-00A-040A-A.
- (f) Apply tape (Silicone red, fiberglass) (Material No. P09-064), as necessary, around the electrical harness (1) at the installation position of the new cable tie.

- (g) Use the applicable new cable ties (Material No. P09-005/P09-008/P09-014) as necessary, to:
- Attach the electrical harness (1) to the new saddle (6)
 - Replace any cable ties that you cut and removed to get access.
- (2) **Improvement to prevent the power cable from chafing on the screw head.**
Refer to Figure 1 (Sheet 3 and 4)



Reference: NOSE06

At the LH defog contactor panel (K0911):

WARNING: BE CAREFUL WHEN YOU USE THE CONSUMABLE MATERIALS. OBEY THE MANUFACTURERS' HEALTH AND SAFETY INSTRUCTIONS.

- (a) Remove the necessary attachment fittings and remove the cover from the LH defog contactor panel (K0911).
- (b) Install the new cable mount on the LH NLG sidewall:

NOTE: Refer to the manufacturers' instructions for the necessary time for consumable materials to cure/dry.

NOTE: Use the measurements shown in Figure 1 (Sheet 4, View E) to determine the installation position of the cable mount.

- 1 Use absorbent paper (Material No. P02-031) made moist with solvent (Material No. P01-010) and clean the mating surfaces of the:
 - New cable mount (22) (P/N 971.32.18.255)
 - LH NLG sidewall at the cable mount (22) installation position.
- 2 Let the solvent dry.
- 3 Apply a layer of adhesive (2 part CB200) (Material No. P08-084) to the mating surface of the cable mount (22).

- 4 Put the cable mount (22) in position on the LH NLG sidewall. If necessary, use a clamp (or equivalent) to hold it in position. Make sure that the cable mount (22) is correctly orientated for the cable tie installation.
 - 5 Remove unwanted adhesive with absorbent paper (Material No. P02-031) made moist with solvent (Material No. P01-010).
 - 6 Let the adhesive dry before you remove the clamp (or equivalent).
- (c) Cut and remove the cable ties, as necessary, from the norm de-ice cable (13) (H211B4) and the LH de-ice cable (12) (H196A4) to get sufficient access to route the two cables in the new positions.
 - (d) Cut and remove the cable tie(s) that attach the spacer (18) between the two cables (12) (H196A4) and (13) (H211B4). Remove and discard the spacer (18).
 - (e) Remove the screw (10), the washer (9) and the loop clamp (8) from the cable (12) (H196A4). Keep the screw (10) and the washer (9). Discard the loop clamp (8).
 - (f) Remove the protective cap from the terminal T2 (11) on the LH defog contactor panel (K0911). Move the protective cap along the cable (13) (H211B4).
 - (g) Remove the nut (14), the washer (15) and the two terminal lugs (16) and (17), of cables (13) (H211B4) and (19) (H211A4), from terminal T2 (11) on the LH defog contactor panel (K0911). Keep the nut (14) and the washer (15).
 - (h) Cut approximately 1.91 in (48,60 mm) off the length of the cable (13) (H211B4) (at the LH defog contactor panel (K0911) end), so that the full length of the cable is 38.58 in (980,00 mm). Refer to Figure 1 (Sheet 4, View D).
 - (i) Cut back the necessary outer insulation from the cable (13) (H211B4), for the new terminal lug (23) installation.
 - (j) Use an applicable crimping tool and install the new terminal lug (23) (P/N 971.31.18.527) in the opposite orientation as it was before (180 degrees rotated). Refer to Figure 1 (Sheet 4, View D).
- NOTE:** The terminal lugs, on the end of the two cables (H211B4) and (H211A4), must be installed back to back on the terminal T2.
- (k) Apply a thin layer of aeroshell grease 58 (Material No. P04-041) on the threads of the screw (10) that you kept.
 - (l) Put the new loop clamp (20) (P/N 946.31.05.808) in position on the two cables (13) (H211B4) and (12) (H196A4).
 - (m) Loosely install the washer (9) and the screw (10).
 - (n) Torque the screw (10) plus the run-down torque. Refer to AMM, PC24-A-E20-20-0001-00A-040A-A.

PC-24

- (o) Put new tape (Silicone red, fiberglass) (Material No. P09-064), as necessary, around the cable (12) (H196A4) and the LH defog cable (H188A4) at the installation positions for the:
- New spacer (21) (P/N 971.32.18.106)
 - New cable mount (22).
- (p) Use the applicable new cable ties (Material No. P09-005/P09-008/P09-014) and install the:
- New spacer (21) between the two cables (12) (H196A4) and (H188A4)
 - Cable (12) (H196A4) on the new cable mount (22).
- (q) Loosely install the two terminal lugs (23) and (17), of cables (13) (H211B4) and (19) (H211A4), the washer (15) and the nut (14) on terminal T2 (11) on the LH defog contactor panel (K0911). Use a new nut (14) (P/N 938.07.65.105) if necessary.
- (r) Torque the nut (14) to between 78 and 95 in-lb (8,8 and 10,8 Nm) plus the run-down torque. Make sure that the two terminal lugs (23) and (17) do not turn or bend. Refer to AMM, PC24-A-E20-20-0001-00A-040A-A.
- (s) Install the protective cap on terminal T2 (11) of the LH defog contactor panel (K0911).
- (t) Install the cover with the necessary attachment fittings on the LH defog contactor panel (K0911).

- (3) Improvement to prevent the electrical harness from chafing on the oxygen pipe.
Refer to Figure 1 (Sheet 5)



Reference: NOSE13

At the RH vertical beam below the electrical receptacles JB1021 and JB1022, and above the oxygen pipe:

WARNING: BE CAREFUL WHEN YOU USE THE CONSUMABLE MATERIALS. OBEY THE MANUFACTURERS' HEALTH AND SAFETY INSTRUCTIONS.

- (a) Remove the screw (24), the washer (25) and the loop clamp (26) that attach the electrical harness (28) to the RH vertical beam.
- (b) Cut and remove the necessary cable ties from the electrical harness (28) to get sufficient access to install the new protection sleeve (27).
- (c) Put the new protection sleeve (27) (P/N 917.96.92.155) (length 4.72 in (120,00 mm)) in position on the electrical harness (28). Make sure that it is positioned so that a minimum of half the width of the loop clamp (26) will cover it when installed.
- (d) Use the applicable new cable ties (Material No. P09-005/P09-008/P09-014) to attach the protection sleeve (27) to the electrical harness (28).
- (e) Apply a thin layer of aeroshell grease 58 (Material No. P04-041) on the threads of the screw (24).
- (f) Put the loop clamp (26) in position on the electrical harness (28) and the RH vertical beam.
- (g) Loosely install the washer (25) and the screw (24).
- (h) Torque the screw (24) plus the run-down torque. Refer to AMM, PC24-A-E20-20-0001-00A-040A-A.
- (i) Use the applicable cable ties (Material No. P09-005/P09-008/P09-014) to replace any cable ties that you cut and removed to get access.

C. Modification - Cockpit. Refer to Figure 2

- (1) **Improvement to prevent the electrical harness from chafing on the oxygen pipe. Refer to Figure 2 (Sheet 2 and 3)**



Reference: FEED4

On the LH side of the cockpit, aft of Frame 13, at the essential feeder 1 (P175F4) and the essential feeder (P175E4):

WARNING: BE CAREFUL WHEN YOU USE THE CONSUMABLE MATERIALS. OBEY THE MANUFACTURERS' HEALTH AND SAFETY INSTRUCTIONS.

- (a) Cut and remove the necessary cable ties from the electrical harness (1), the essential feeder 1 (2) (P175F4) and the essential feeder (3) (P175E4) to get sufficient access to:
- Install the new spacer (15) (P/N 971.32.18.108) between the electrical harness (1), the essential feeder 1 (2) (P175F4) and the essential feeder (3) (P175E4)
 - Install the new roll (8) (P/N 557.10.21.563) at the upper attachment position (6)
 - Install the new distance bush (14) (P/N 591.60.12.015) at the lower attachment position (12).
- (b) Remove the screw (9), the washer (10) and the saddle (11) from the lower attachment position (12). Discard the screw (9). Keep the washer (10) and the saddle (11). Refer to Figure 2 (Sheet 3).
- (c) Remove the screw (4) and the saddle (5) from the upper attachment position (6). Discard the screw (4). Keep the saddle (5). Refer to Figure 2 (Sheet 2).
- (d) Apply a thin layer of aeroshell grease 58 (Material No. P04-041) on the threads of the two new screws (7) (P/N 935.63.31.118) and (13) (P/N 935.63.11.046).
- (e) Loosely install the new roll (8) (P/N 557.10.21.563), the saddle (5) (that you kept) and the new screw (7) (P/N 935.63.31.118) at the upper attachment position (6). Refer to Figure 2 (Sheet 2).

- (f) Loosely install the new distance bush (14) (P/N 591.60.12.015), the saddle (11) and washer (10) (that you kept), and the new screw (13) (P/N 935.63.11.046) at the lower attachment position (12). Refer to Figure 2 (Sheet 3).
- (g) Torque the two screws (7) and (13) plus the run-down torque. Refer to AMM, PC24-A-E20-20-0001-00A-040A-A.
- (h) Put new tape (Silicone red, fiberglass) (Material No. P09-064) around the electrical harness (1), the essential feeder 1 (2) (P175F4) and the essential feeder (3) (P175E4) at the installation position for the new spacer (15).
- (i) Put the new spacer (15) (P/N (P/N 971.32.18.108) in position between the electrical harness (1), the essential feeder 1 (2) (P175F4) and the essential feeder (3) (P175E4).
- (j) Use the applicable new cable ties (Material No. P09-005/P09-008/P09-014), as necessary, to:
 - Attach the new spacer (15) between the electrical harness (1), the essential feeder 1 (2) (P175F4) and the essential feeder (3) (P175E4)
 - Attach the essential feeder 1 (2) (P175F4) and the essential feeder (3) (P175E4) to the two saddles (11) and (5) at the lower and upper attachment positions
 - Replace any cable ties that you cut and removed to get access.

(2) Improvement to prevent the electrical harness from chafing on the hydraulic pipe. Refer to Figure 2 (Sheet 4)



Reference: CS1_5

On the LH side of the cockpit, aft of Frame 11, at the electrical harness that is connected to relay K311 at the rear of the pilots equipment panel (PNL1111):

- (a) Do a check to see if the distance from the electrical harness (17) to the hydraulic pipe (16) is ≥ 0.60 in (15,00 mm).

- (b) If the distance from the electrical harness (17) to the hydraulic pipe (16) is < 0.60 in (15,00 mm):
- 1 Cut and remove the necessary cable tie(s) so that you can modify the route of the electrical harness (17).
 - 2 Modify the route so that the:
 - Electrical harness (17) can be attached to the saddle (18)
 - Clearance from the hydraulic pipe (16) is a minimum distance of 0.60 in (15,00 mm).
 - 3 Put new tape (Silicone red, fiberglass) (Material No. P09-064) around the electrical harness (17) at the new installation position on the saddle (18).
 - 4 Use the applicable new cable ties (Material No. P09-005/P09-008/P09-014) to:
 - Attach the electrical harness (17) on the saddle (18)
 - Replace any cable ties that you cut and removed to get access.
- (3) **Improvement to prevent the electrical harness from chafing on the static pipe. Refer to Figure 2 (Sheet 5)**



Reference: CS1_9

On the LH side of the cockpit, at the rear of the pilots Electronic Standby Instrument System (ESIS):

NOTE: Refer to Figure 2 (Sheet 5, View H) to determine the approximate installation position and length of the protection sleeve.

- (a) Cut and remove the necessary cable ties from the electrical harness (19) to get sufficient access to install the new protection sleeve (20).
- (b) Cut a new piece of protection sleeve (20) (P/N 917.96.92.154) to a length of 3.94 in (100,00 mm).

- (c) Put the new protection sleeve (20) in position on the electrical harness (19). Make sure that it is positioned so that the electrical harness (19) cannot chafe on the static pipe.
- (d) Use the applicable new cable ties (Material No. P09-005/P09-008/P09-014) to:
- Attach the protection sleeve (20) to the electrical harness (19)
 - Replace any cable ties that you cut and removed to get access.
- (4) **Improvement to prevent the electrical harness from chafing on the hydraulic pipe. Refer to Figure 2 (Sheet 6)**



Reference: CS2_7

On the RH side of the cockpit, aft of Frame 11, at the electrical harness that is connected to relay K407 at the rear of the copilots equipment panel (PNL1121):

- (a) Do a check to see if the distance from the electrical harness (22) to the hydraulic pipe (23) is ≥ 0.60 in (15,00 mm).
- (b) If the distance from the electrical harness (22) to the hydraulic pipe (23) is < 0.60 in (15,00 mm):
- 1 Cut and remove the necessary cable tie(s) so that you can modify the route of the electrical harness (22).
 - 2 Modify the route so that the:
 - Electrical harness (22) can be attached to the saddle (21)
 - Clearance from the hydraulic pipe (23) is a minimum distance of 0.60 in (15,00 mm).
 - 3 Put new tape (Silicone red, fiberglass) (Material No. P09-064) around the electrical harness (22) at the new installation position on the saddle (21).

- 4 Use the applicable new cable ties (Material No. P09-005/P09-008/P09-014) to:
- Attach the electrical harness (22) on the saddle (21)
 - Replace any cable ties that you cut and removed to get access.

D. Modification - Avionics rack. Refer to Figure 3

- (1) Improvement to prevent the electrical harness from chafing on the mounting tray. Refer to Figure 3 (Sheet 1)**



Reference: AV5

(For aircraft with the In-Flight Entertainment (XM) Factory Option installed only)

At the bottom of the avionics rack, where the emissive harness and the susceptible harness branch-out at the side of the mounting tray for the entertainment system:

- (a) Cut and remove the necessary cable ties from the emissive harness (2) and the susceptible harness (1) so that you can route the branch-out to the new position.

NOTE: The new position for the branch-out is 3.94 in (100,00 mm) below the existing position.

- (b) Remove/Install tape (Silicone red, fiberglass) (Material No. P09-064), as necessary, when you modify the route of the branch-out.
- (c) Use the applicable new cable ties (Material No. P09-005/P09-008/P09-014) to:
- Route the susceptible harness (1) and the emissive harness (2) so that the branch-out is 3.94 in (100,00 mm) below the original position. Refer to Figure 3 (Sheet 1, View B)
 - Route the susceptible harness (1) and the emissive harness (2) so that there is a minimum distance of 0.39 in (10,00 mm) from the mounting tray of the entertainment system. Refer to Figure 3 (Sheet 1, View B)
 - Replace any cable ties that you cut and removed.

- (2) Improvement to prevent the coaxial harnesses from chafing on the avionics rack structure. Refer to Figure 3 (Sheet 2)



Reference: AV10

On the upper mounting rail at the rear of the avionics rack, in front of the coaxial harness (nav antenna) and the coaxial harness (glideslope antenna):

WARNING: BE CAREFUL WHEN YOU USE THE CONSUMABLE MATERIALS. OBEY THE MANUFACTURERS' HEALTH AND SAFETY INSTRUCTIONS.

NOTE: Refer to the manufacturers' instructions for the necessary time for consumable materials to cure/dry.

NOTE: Refer to Figure 3 (Sheet 2, View D) to determine the installation position and length of the rubber u-section.

- (a) Cut a new piece of rubber u-section (6) (P/N 917.59.37.536) to a length of 2.95 in (75,00 mm).
- (b) Use absorbent paper (Material No. P02-031) made moist with solvent (Material No. P01-010) and clean the mating surfaces of the upper mounting rail (5).
- (c) Let the solvent dry.
- (d) Apply a layer of adhesive (Material No. P08-080) to the mating surfaces of the upper mounting rail (5).
- (e) Put the rubber u-section (6) in position on the upper mounting rail (5).
- (f) Remove unwanted adhesive with absorbent paper (Material No. P02-031) made moist with solvent (Material No. P01-010).

- (3) Improvement to prevent the electrical harness from chafing on the SELCAL decoder. Refer to Figure 3 (Sheet 2)



Reference: AV11

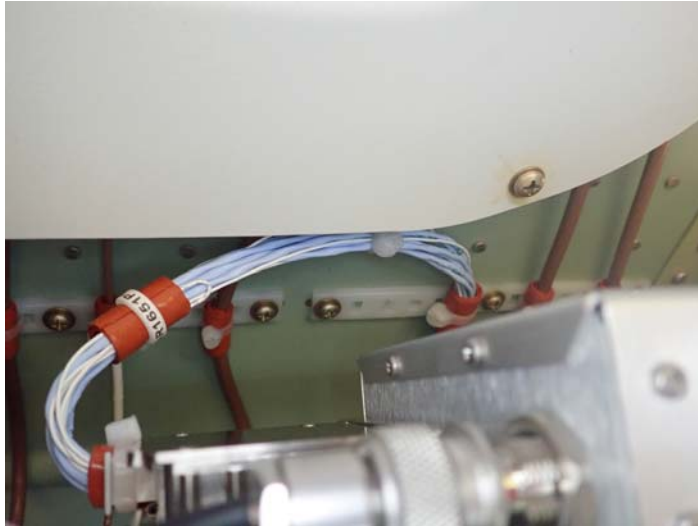
(For aircraft with the Selective Calling (SELCAL) Factory Option installed only)

At the rear of the avionics rack, on the electrical harness behind the SELCAL decoder:

NOTE: Refer to Figure 3 (Sheet 2, View C) to determine the installation position and length of the protection sleeve.

- (a) Cut and remove the necessary cable ties from the electrical harness (3) to get sufficient access to install the new protection sleeve (4).
- (b) Cut a new piece of protection sleeve (4) (P/N 917.96.92.154) to a length of 3.94 in (100,00 mm).
- (c) Put the new protection sleeve (4) in position on the electrical harness (3). Make sure that it is positioned so that the electrical harness (3) cannot chafe on the SELCAL decoder.
- (d) Use the applicable new cable ties (Material No. P09-005/P09-008/P09-014) to:
 - Attach the protection sleeve (4) to the electrical harness (3)
 - Replace any cable ties that you cut and removed to get access.

- (4) Improvement to prevent the electrical harness from chafing on the top cover of the avionics rack. Refer to Figure 3 (Sheet 3)



Reference: AV13

At the top of the avionics rack, below the top cover, on the electrical harness that comes from the electrical connector (AR1651P1):

- NOTE:** Refer to Figure 3 (Sheet 3, View E) to determine the installation position and length of the protection sleeve.
- (a) Cut and remove the necessary cable ties from the electrical harness (8) to get sufficient access to:
- Modify the route of the electrical harness (8)
 - Install the new protection sleeve (9).
- (b) Remove/Install tape (Silicone red, fiberglass) (Material No. P09-064), as necessary, when you modify the route of the electrical harness (8).
- (c) Cut a new piece of protection sleeve (9) (P/N 917.96.92.152) to a length of 3.94 in (100,00 mm).
- (d) Put the new protection sleeve (9) in position on the electrical harness (8). Make sure that it is positioned so that the electrical harness (8) cannot chafe on the top cover (7).
- (e) Use the applicable new cable ties (Material No. P09-005/P09-008/P09-014) to:
- Attach the protection sleeve (9) to the electrical harness (8)
 - Modify the route of the electrical harness (8) so that it cannot chafe on the top cover (7)
 - Replace any cable ties that you cut and removed to get access.

- (5) Improvement to prevent the electrical harness from chafing on the SYS2 electrical harness. Refer to Figure 3 (Sheet 4)



Reference: AV14

In the avionics rack, at the rear of the Multi-Mode Digital Radio (MMDR) 2, on the electrical harness that comes from the electrical connector AR1641P1:

NOTE: Refer to Figure 3 (Sheet 4, View F) to determine the installation position and length of the protection sleeve.

- (a) Cut and remove the necessary cable ties from the electrical harness (10) to get sufficient access to install the new protection sleeve (12).
- (b) Cut a new piece of protection sleeve (12) (P/N 917.96.92.154) to a length of 2.36 in (60,00 mm).
- (c) Remove/Install tape (Silicone red, fiberglass) (Material No. P09-064), as necessary, so that you can install the new protection sleeve (12) on the electrical harness (10).
- (d) Put the new protection sleeve (12) in position on the electrical harness (10) so that it is fully against the backshell of electrical connector (11) (AR1641P1).
- (e) Use the applicable new cable ties (Material No. P09-005/P09-008/P09-014) to:
 - Attach the protection sleeve (12) to the electrical harness (10)
 - Replace any cable ties that you cut and removed to get access.

E. Modification - Fuselage. Refer to Figure 4

- (1) Improvement to prevent the electrical harnesses from chafing on the DCPU 3 and Frame 24. Refer to Figure 4 (Sheet 2)



Reference: FUSE07

Below the 133DLF floor panel (22-25 MID), at Frame 24, on the electrical harness that routes from the three electrical connectors A2401P2, A2401P4 and A2401P5 that are connected to the DCPU 3:

- (a) Do a check to see if the distance between the electrical harness (2), and the DCPU 3 (3) and Frame 24 is ≥ 0.39 in (10,00 mm).
- (b) If the distance between the electrical harness (2), and the DCPU 3 (3) and Frame 24 is not ≥ 0.39 in (10,00 mm):
 - 1 Cut and remove the necessary cable ties to get sufficient access to modify the route of the electrical harness (2).
 - 2 Remove/Install tape (Silicone red, fiberglass) (Material No. P09-064), as necessary.
 - 3 Use the applicable new cable ties (Material No. P09-005/P09-008/P09-014) to:
 - Modify the route of the electrical harness (2) so that there is a minimum distance of 0.39 in (10,00 mm) between the DCPU 3 (3) and Frame 24. If necessary, move the cable mount (1) to a different orientation
 - Replace any cable ties that you cut and removed to modify the route of the electrical harness (2).

- (2) Improvement to prevent the electrical harness from chafing on the DCPU 1 and Frame 21. Refer to Figure 4 (Sheet 3)



Reference: FUSE13

Below the 133BLF floor panel (19-22 MID), at Frame 21, on the electrical harness that routes from the three electrical connectors A2101P2, A2101P4 and A2101P5 that are connected to the DCPU 1:

- (a) Do a check to see if the distance between the electrical harness (4), and the DCPU 1 (6) and Frame 21 is ≥ 0.39 in (10,00 mm).
- (b) If the distance between the electrical harness (4), and the DCPU 1 (6) and Frame 21 is not ≥ 0.39 in (10,00 mm):
 - 1 Cut and remove the necessary cable ties to get sufficient access to modify the route of the electrical harness (4).
 - 2 Remove/Install tape (Silicone red, fiberglass) (Material No. P09-064), as necessary.
 - 3 Use the applicable new cable ties (Material No. P09-005/P09-008/P09-014) to:
 - Attach all three branches of the electrical harness (4) to the top half of the cable mount (5). If necessary, move the cable mount (5) to a different orientation
 - Modify the route of the electrical harness (4) so that there is a minimum distance of 0.39 in (10,00 mm) from the DCPU 1 (6) and Frame 21
 - Replace any cable ties that you cut and removed to modify the route of the electrical harness (4).

F. Modification - Wing fairing. Refer to Figure 5

- (1) Improvement to prevent the electrical harness from chafing on the power cable. Refer to Figure 5 (Sheet 2)



Reference: BELL04

Below Frame 35, inboard of the electrical connectors PB3521 and PB3522, between the power cable (P115A0000) and the electrical harness, aft of panel PNLB3402:

- (a) Cut and remove the necessary cable ties from the electrical harness (2) and/or the power cable (1) (P115A0000) to get sufficient access to install the new spacer (3) (P/N 971.32.18.108).
- (b) Put new tape (Silicone red, fiberglass) (Material No. P09-064) around the electrical harness (2) and the power cable (1) (P115A0000) at the new spacer (3) installation position.
- (c) Put the new spacer (3) (P/N 971.32.18.108) in position between the electrical harness (2) and the power cable (1) (P115A0000).
- (d) Use the applicable new cable ties (Material No. P09-005/P09-008/P09-014) to:
 - Attach the spacer (3) between the electrical harness (2) and the power cable (1) (P115A0000)
 - Replace any cable ties that you cut and removed to get access.

- (2) Improvement to prevent the electrical harness from chafing on the power cable.
Refer to Figure 5 (Sheet 3)



Reference: BELL08

Below Frame 35, outboard of the electrical connectors PB3511 and PB3512, between the essential feeder cable (P175B4) and the electrical harness, aft of panel PNLB3401:

- (a) Cut and remove the necessary cable ties from the electrical harnesses (6) and (8), and/or the essential feeder cable (5) (P175B4) to get sufficient access to install the two new spacers (7) and (4) (P/N 971.32.18.108).
- (b) Put new tape (Silicone red, fiberglass) (Material No. P09-064) around the electrical harnesses (6) and (8), and the essential feeder cable (5) (P175B4) at the installation positions for the two new spacers (7) and (4).
- (c) Put the two new spacers (7) and (4) (P/N 971.32.18.108) in position between the:
 - Electrical harness (6) and the essential feeder cable (5) (P175B4).
 - Electrical harness (8) and the essential feeder cable (5) (P175B4).
- (d) Use the applicable new cable ties (Material No. P09-005/P09-008/P09-014) to:
 - Attach the two spacers (7) and (4) between the electrical harnesses (6) and (8), and the essential feeder cable (5) (P175B4)
 - Replace any cable ties that you cut and removed to get access.

- (3) **Improvement to prevent the electrical harness from chafing on the structure.**
Refer to Figure 5 (Sheet 4 and 5)



Reference: BELL13

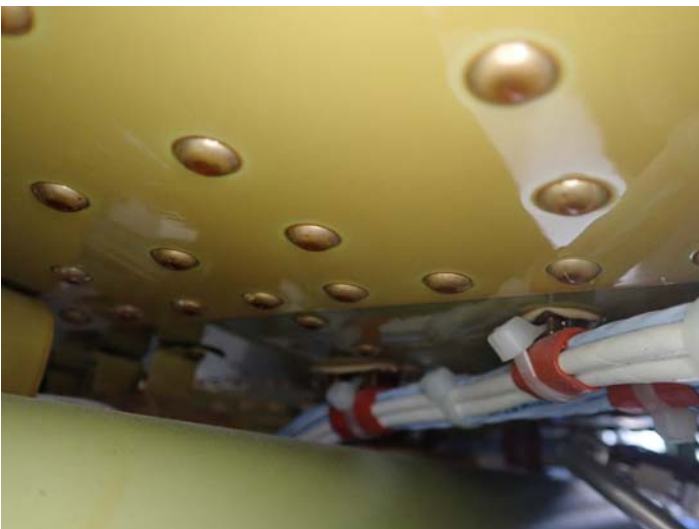
At the LH structure support below Frame 34, between the essential feeder 4 (P175A4), the essential feeder cable (P175B4) and the electrical harness:

- (a) Cut and remove the necessary cable ties from the electrical harness (9), the essential feeder cable (11) (P175B4) and the essential feeder 4 (12) (P175A4) to get sufficient access to install the new spacer (13) (P/N 971.32.18.106), and move the existing spacer (10).
- (b) Cut and remove the cable ties that attach the existing spacer (10) between the electrical harness (9) and the essential feeder cable (11) (P175B4).
- (c) Remove and keep the spacer (10).
- (d) Put new tape (Silicone red, fiberglass) (Material No. P09-064) around the electrical harness (9), the essential feeder cable (11) (P175B4) and the essential feeder 4 (12) (P175A4) at the two installation positions for the spacers (10) and (13).
- (e) Put the spacer (10) (that you kept) in the new installation position between the electrical harness (9) and the essential feeder cable (11) (P175B4).
- (f) Use the applicable new cable ties (Material No. P09-005/P09-008/P09-014) to attach the spacer (10).
- (g) Put the new spacer (13) (P/N 971.32.18.106) in position between the electrical harness (9) and the essential feeder 4 (12) (P175A4).
- (h) Use the applicable new cable ties (Material No. P09-005/P09-008/P09-014) to:
 - Attach the new spacer (13)
 - Replace any cable ties that you cut and removed to get access.

- (4) Improvement to prevent the electrical harness from chafing on the flaps torque tube assembly. Refer to Figure 5 (Sheet 6, 7 and 8)



Reference: BELL17



Reference: BELL18

Below Frame 31, between the aircraft skin and the flaps torque-tube assembly, inboard of the LH and RH MLG wheel shrouds:

WARNING: BE CAREFUL WHEN YOU USE THE CONSUMABLE MATERIALS. OBEY THE MANUFACTURERS' HEALTH AND SAFETY INSTRUCTIONS.

NOTE: Refer to the manufacturers' instructions for the necessary time for consumable materials to cure/dry.

- (a) Cut and remove the necessary cable ties and tape (silicone red, fiberglass) to get sufficient access to:
- Install the three new cable mounts (14) (P/N 971.32.18.251) on the LH side
 - Install one new cable mount (16) (P/N 971.32.18.251) on the RH side
 - Modify the route of the emissive harness (15) on the LH side, and the susceptible harness (17) on the RH side.

Refer to Figure 5 (Sheet 6, 7 and 8, View F, G and H).

- (b) Install the four new cable mounts:

NOTE: Refer to Figure 5 (Sheet 6 and 8, View F and H) to determine the installation positions of the four new cable mounts.

NOTE: The procedure to install each of the four new cable mounts is the same.

- 1 Use absorbent paper (Material No. P02-031) made moist with solvent (Material No. P01-010) and clean the mating surfaces of the:
 - New cable mount (14)/(16) (P/N 971.32.18.251)
 - New cable mount (14)/(16) installation position on the aircraft skin.
 - 2 Let the solvent dry.
 - 3 Apply a layer of adhesive (2 part CB200) (Material No. P08-084) to the mating surface of the cable mount (14)/(16).
 - 4 Put the cable mount (14)/(16) in position on the aircraft skin. If necessary, use tape (or equivalent) to hold it in position. Make sure that the cable mount (14)/(16) is correctly orientated for the cable tie installation.
 - 5 Remove unwanted adhesive with absorbent paper (Material No. P02-031) made moist with solvent (Material No. P01-010).
 - 6 Do the above procedure again to install the other cable mounts (14)/(16).
 - 7 Let the adhesive dry before you attach the electrical harnesses (15), (17), (18) and (19).
- (c) At the position where the emissive harness (15) and the susceptible harness (19) are routed together between the aircraft skin and the flaps torque-tube assembly on the LH side:
- 1 Make the emissive harness (15) and the susceptible harness (19) as flat as possible.

NOTE: The maximum permitted distance from the aircraft skin to the lowest part of the electrical harness is 0.79 in (20,00 mm). Refer to Figure 5 (Sheet 7, Section A-A)
 - 2 Put one layer of new tape (Silicone red, fiberglass) (Material No. P09-064) around the emissive harness (15), and the susceptible harness (19), at the applicable new cable mount (14) installation positions.
 - 3 Route the emissive harness (15) to the position of the two new outboard cable mounts (14).
 - 4 Use the applicable new cable ties (Material No. P09-005/P09-008/P09-014) to install the emissive harness (15) on the two new cable mounts (14).
 - 5 Route the susceptible harness (19) to the position of the new inboard cable mount (14).

PC-24

- 6 Use the applicable new cable ties (Material No. P09-005/P09-008/P09-014) to install the susceptible harness (19) on the new cable mount (14).
 - 7 Make sure that the distance between the:
 - Aircraft skin and the lowest part of the emissive harness (15) and susceptible harness (19) is ≤ 0.79 in (20,00 mm)
 - Cable ties and the flaps torque-tube assembly is > 0.20 in (5,00 mm).
- (d) At the position where the emissive harness (18) and the susceptible harness (17) are routed together between the aircraft skin and the flaps torque-tube assembly on the RH side:
- 1 Make the emissive harness (18) and the susceptible harness (17) as flat as possible.

NOTE: The maximum permitted distance from the aircraft skin to the lowest part of the electrical harness is 0.79 in (20,00 mm). Refer to Figure 5 (Sheet 7, Section B-B).
 - 2 Put one layer of new tape (Silicone red, fiberglass) (Material No. P09-064) around the susceptible harness (17) at the new cable mount (16) installation position.
 - 3 Route the susceptible harness (17) to the position of the new inboard cable mount (16).
 - 4 Use the applicable new cable ties (Material No. P09-005/P09-008/P09-014) to install the susceptible harness (17) on the new cable mount (16).
 - 5 Use the applicable new cable ties (Material No. P09-005/P09-008/P09-014) to install the emissive harness (18) on the existing cable mount.
 - 6 Make sure that the distance between the:
 - Aircraft skin and the lowest part of the emissive harness (18) and susceptible harness (17) is ≤ 0.79 in (20,00 mm)
 - Cable ties and the flaps torque-tube assembly is > 0.20 in (5,00 mm).
- (e) Use the applicable new cable ties (Material No. P09-005/P09-008/P09-014) to replace any cable ties that you cut and removed to get access.

- (5) Improvement to prevent the electrical harness from chafing on the structure.
Refer to Figure 5 (Sheet 9)



Reference: BELL33

At the LH side of the hydraulic reservoir, between Frame 22 and Frame 23, at the structure angle and the electrical harness:

WARNING: BE CAREFUL WHEN YOU USE THE CONSUMABLE MATERIALS. OBEY THE MANUFACTURERS' HEALTH AND SAFETY INSTRUCTIONS.

NOTE: Refer to the manufacturers' instructions for the necessary time for consumable materials to cure/dry.

NOTE: Refer to Figure 5 (Sheet 9, View J, K and L) to determine the approximate installation position and length of the rubber u-section and the protection sleeve.

- (a) Install the rubber u-section (edge protection) on the structure angle:
- 1 Cut a new piece of rubber u-section (20) (P/N 917.59.37.536) to a length of 0.98 in (25,00 mm).
 - 2 Use absorbent paper (Material No. P02-031) made moist with solvent (Material No. P01-010) and clean the mating surfaces of the structure angle (21).
 - 3 Let the solvent dry.
 - 4 Apply a layer of adhesive (Material No. P08-080) to the mating surfaces of the structure angle (21).
 - 5 Put the rubber u-section (20) in position on the structure angle (21).

- 6 Remove unwanted adhesive with absorbent paper (Material No. P02-031) made moist with solvent (Material No. P01-010).
- (b) Install the protection sleeve on the electrical harness:
- 1 Cut and remove the necessary cable ties from the electrical harness (23) to get sufficient access to install the new protection sleeve (22).
 - 2 Cut a new piece of protection sleeve (22) (P/N 917.96.92.152) to a length of 1.97 in (50,00 mm).
 - 3 Put the new protection sleeve (22) in position on the electrical harness (23) below the structure angle (21) and the rubber u-section (20) that you installed.
 - 4 Use the applicable new cable ties (Material No. P09-005/P09-008/P09-014) to:
 - Attach the protection sleeve (22) to the electrical harness (23)
 - Replace any cable ties that you cut and removed to get access.

G. Modification - Rear fuselage. Refer to Figure 6

(1) Improvement to the electrical harness branch-out. Refer to Figure 6

Reference: P1 and P2

Between the front and rear engine beam, on the middle firewall in the LH/RH pylon, at the electrical harness that connects to the electrical receptacle JB4505/JB4605:

NOTE: The procedure to do the electrical harness branch-out improvement in the LH and RH pylon is the same.

- (a) Do a check to see if there is tension/strain on the electrical harness (1) that branches-out to the electrical receptacle JB4505 (LH)/JB4605 (RH).
- (b) If there is tension/strain on the electrical harness (1):
 - 1 Cut and remove the necessary cable ties to get sufficient access to modify the route of the electrical harness (1).
 - 2 Remove/Install tape (Silicone red, fiberglass) (Material No. P09-064), as necessary.
 - 3 Use the applicable new cable ties (Material No. P09-005/P09-008/P09-014) to:
 - Modify the route so that there is no tension/strain on the electrical harness (1)
 - Replace any cable ties that you cut and removed to modify the route of the electrical harness (1).
- (c) Do the above procedure again to do the electrical harness branch-out improvement on the other side of the aircraft.

H. Requirements after job completion

- (1) Remove all the equipment, tools and materials from the work area. Make sure that the work area is clean.
- (2) Close/Install the access panels/fairings in Table 2. Refer to AMM, PC24-A-A06-40-0000-00A-040A-A and PC24-A-E53-10-0002-00A-720A-A.

Table 2: Access panels/fairings to be closed/installed

Panel number	Panel name
133BLF	Floor panel (19-22 MID)
133DLF	Floor panel (22-25 MID)
141BL	Panel, wing fairing FWD aft, LH
143BBL	Panel, MLG bay aft, wing fairing, LH
143BBR	Panel, MLG bay aft, wing fairing, RH
143DBL	Panel, bottom, LH
143DBR	Panel, bottom, RH
212AL	Nose door LH
212AR	Nose door RH
221AZ	Connection panel sidewall frame 10 LH
221BZ	Lower sidewall panel LH
221CZ	Trim panel lower sidewall LH
221PZ	Connection panel sidewall frame 10 RH
221QZ	Lower sidewall panel 1 RH
221RZ	Trim panel lower sidewall 1 RH
221SZ	Trim panel lower sidewall RH AFT
331AB	Skin panel, FWD, lower LH
341AB	Skin panel, FWD, lower RH

- (3) Install the equipment that you removed to get access in the avionics rack. Refer to the AMM for the applicable procedure.
- (4) Install the inner avionics rack door with the six screws.

(5) Install the pilot PFD. Refer to AMM, PC24-A-E46-30-0001-00A-720A-A.

NOTE: A minimum of two persons are necessary to install the crew seats.

(6) Install the pilot and copilot crew seat. Refer to AMM, PC24-A-E25-10-0001-00A-720A-A.

(7) Lower the aircraft and remove the jacks. Refer to AMM, PC24-A-A07-10-0000-00A-172A-A.

(8) Remove the “**AIRCRAFT ON JACKS**” signs from around the aircraft.

(9) Remove the “**DO NOT CONNECT ELECTRICAL POWER**” signs from the:

- Overhead control panel
- External power connection.

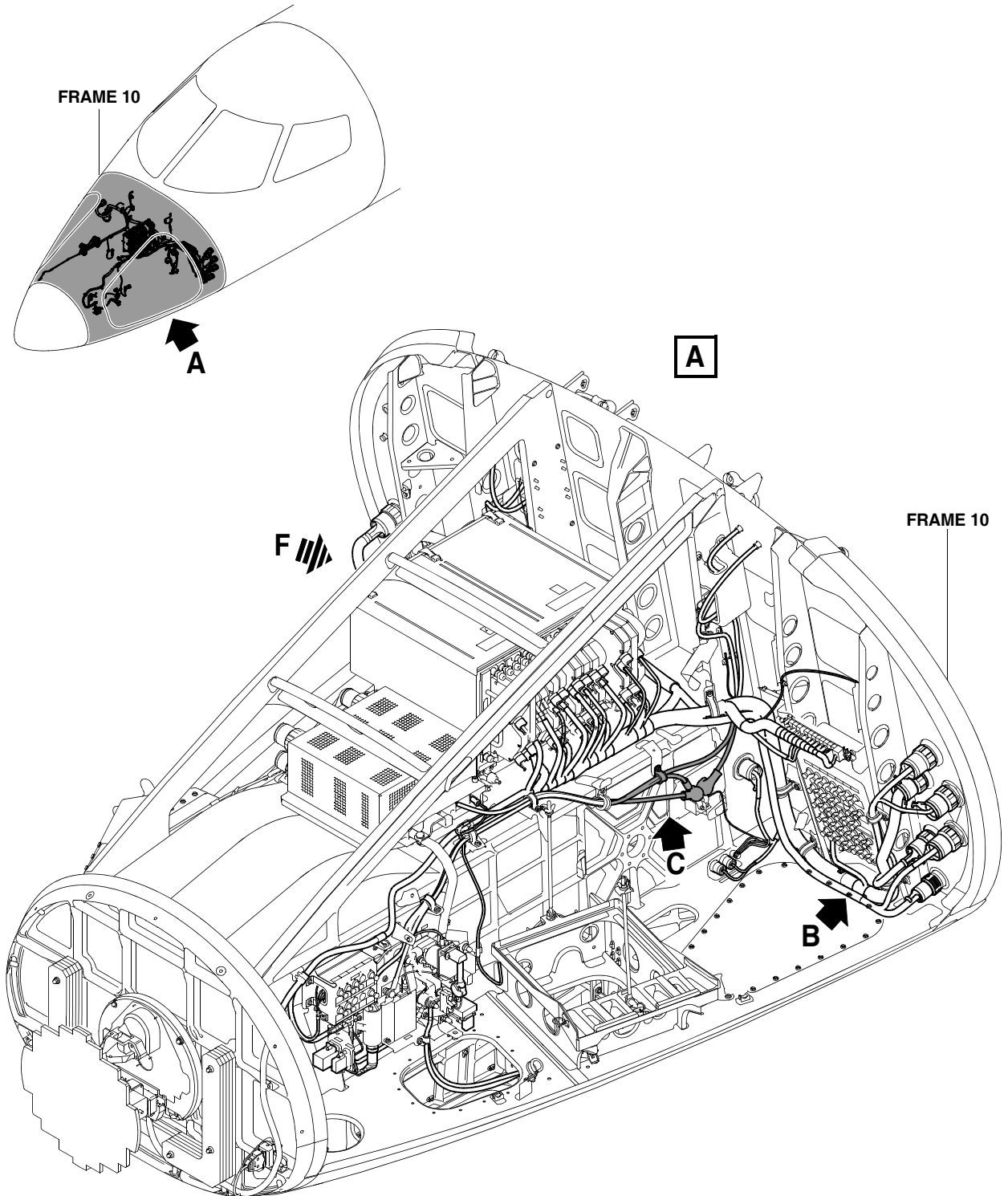
(10) Do the Closeup practices. Refer to AMM, PC24-A-E20-10-0004-00A-913A-A.

I. Documentation

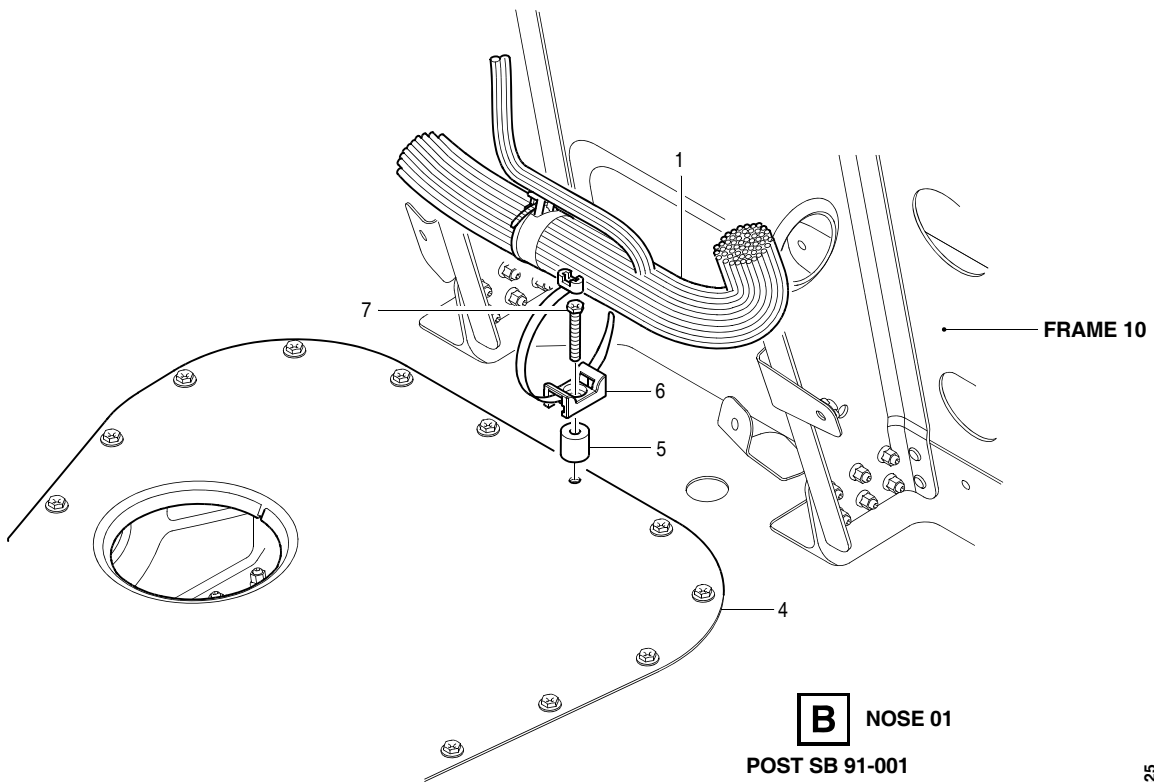
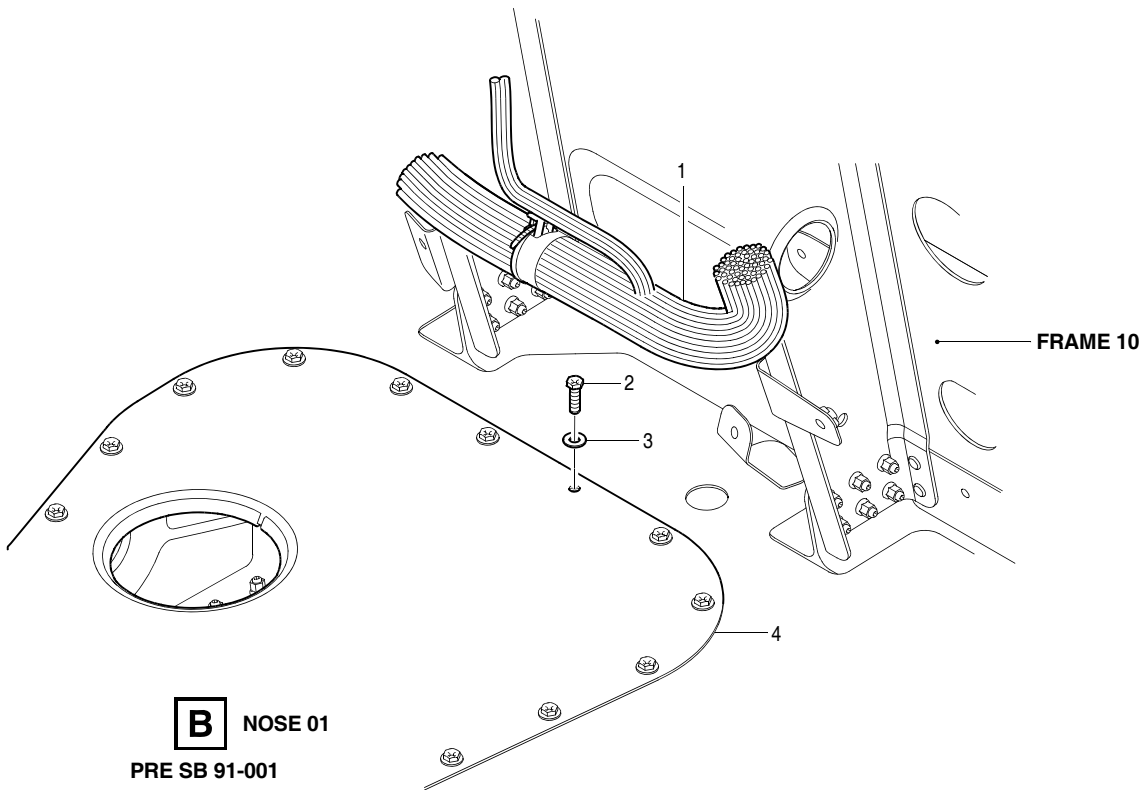
(1) Make an entry in the Aircraft Logbook to record the incorporation of this Service Bulletin.

(2) Make sure that the Aircraft Logbook shows any new Pilatus Part Number(s) and/or Serial Number(s), as applicable.

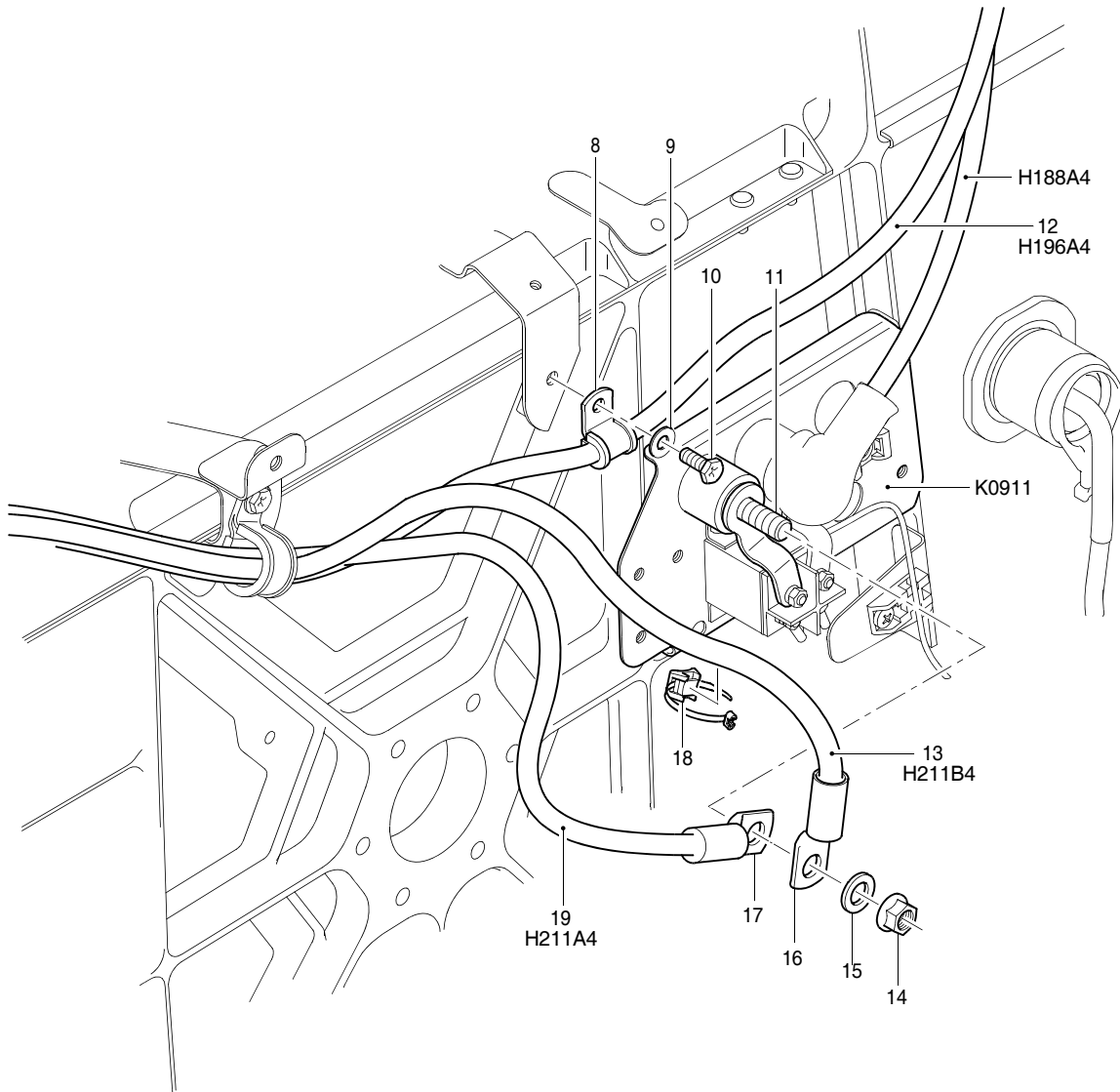
(3) Inform CAMP of the incorporation of this Service Bulletin and any new Pilatus Part Number(s) and/or Serial Number(s), as applicable. Send to: fax@campsystems.com



Improvements to the electrical harness installation - Nose bay
Figure 1 (Sheet 1 of 5)



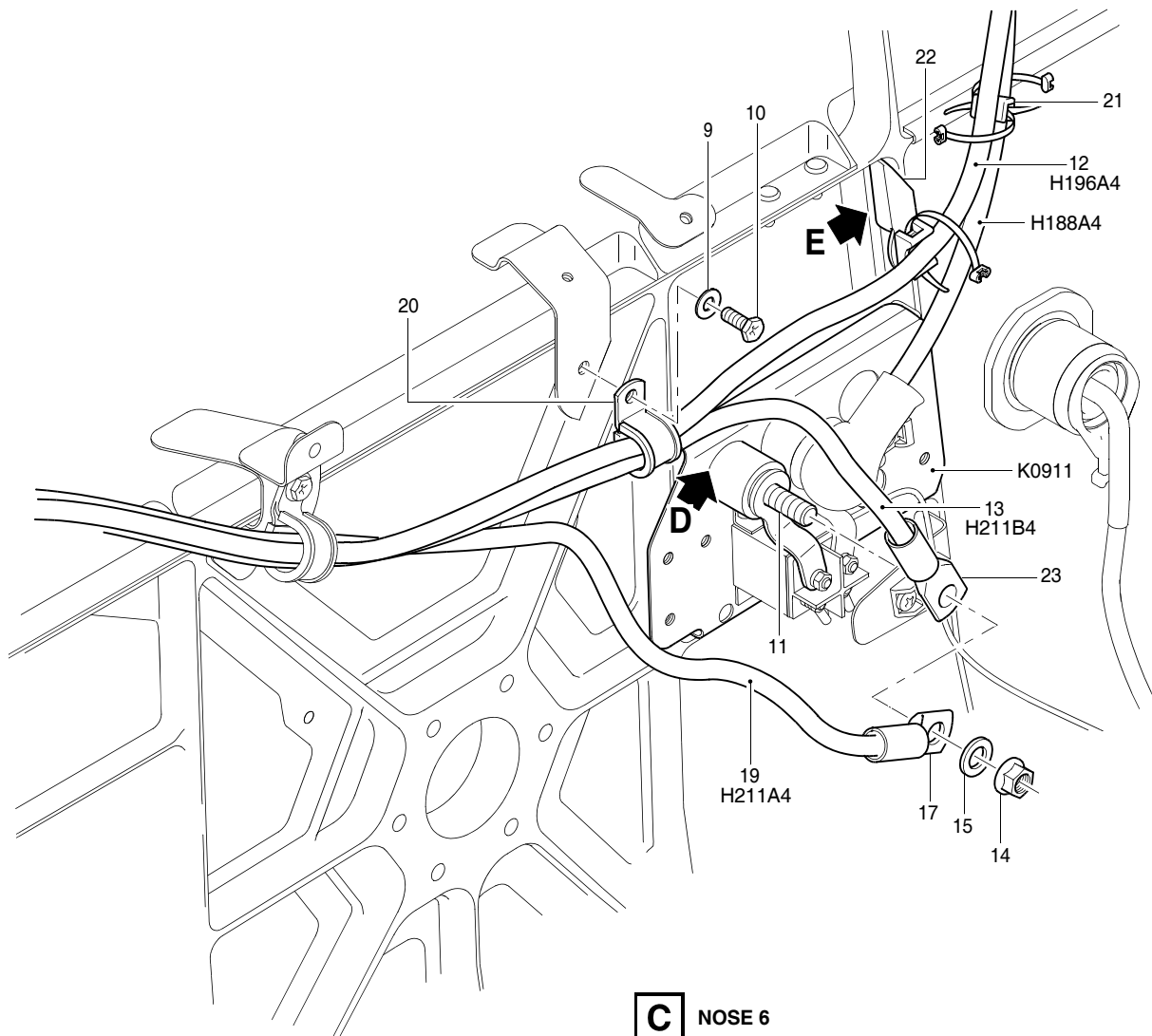
Improvements to the electrical harness installation - Nose bay
Figure 1 (Sheet 2 of 5)



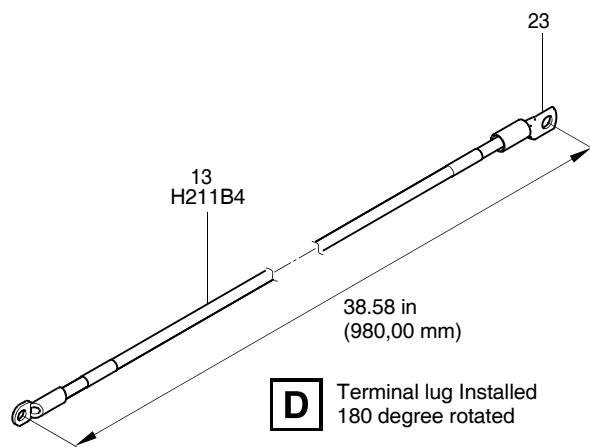
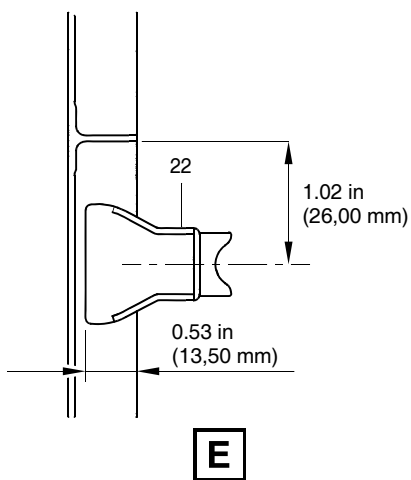
C NOSE 06
PRE SB 91-001

SB 3526

Improvements to the electrical harness installation - Nose bay
Figure 1 (Sheet 3 of 5)

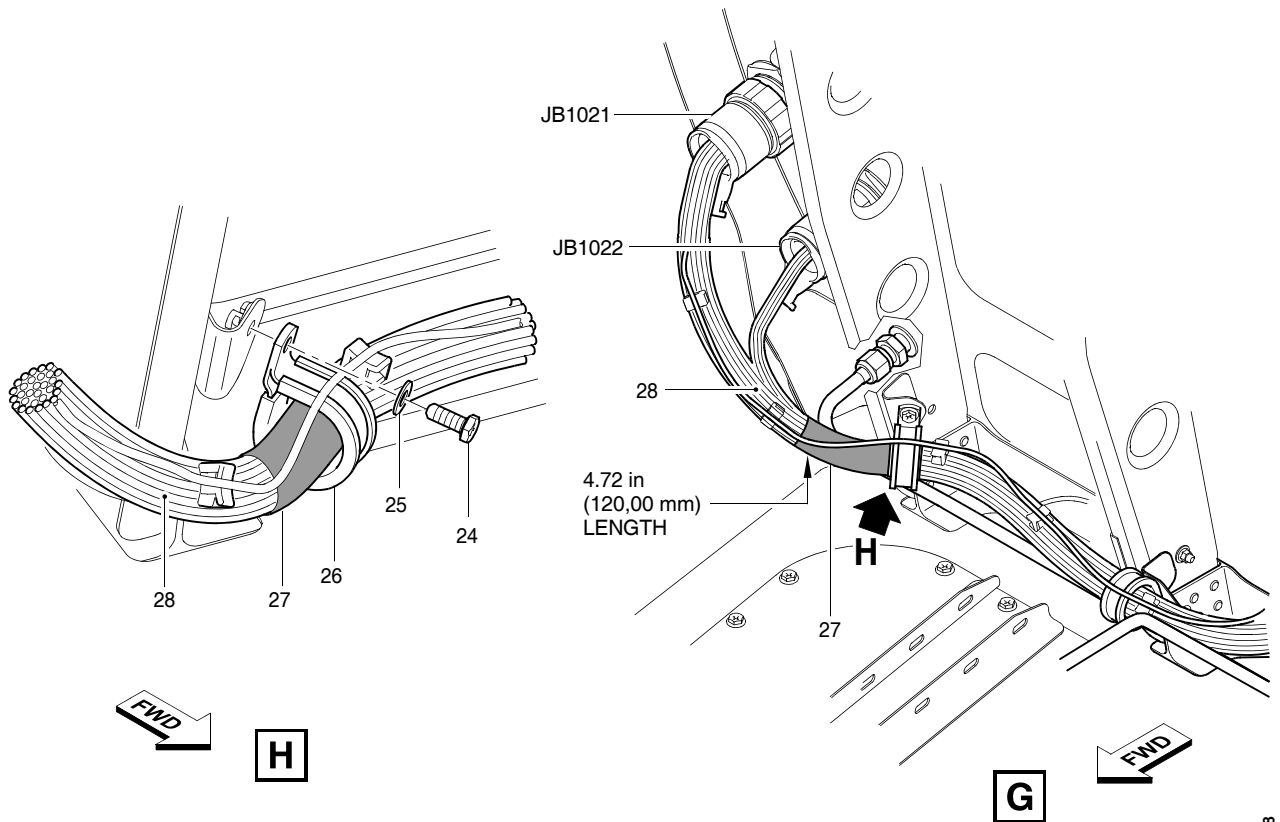
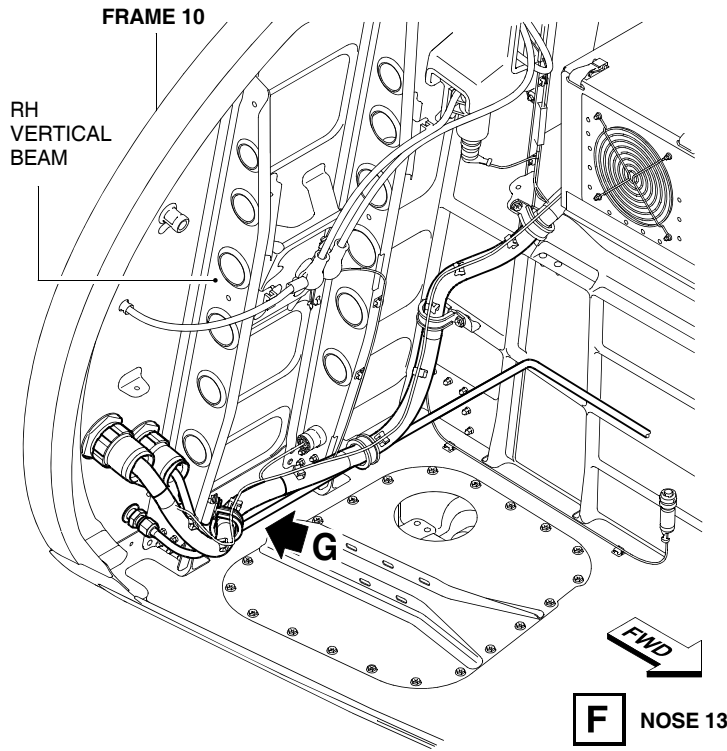


C NOSE 6
POST SB 91-001

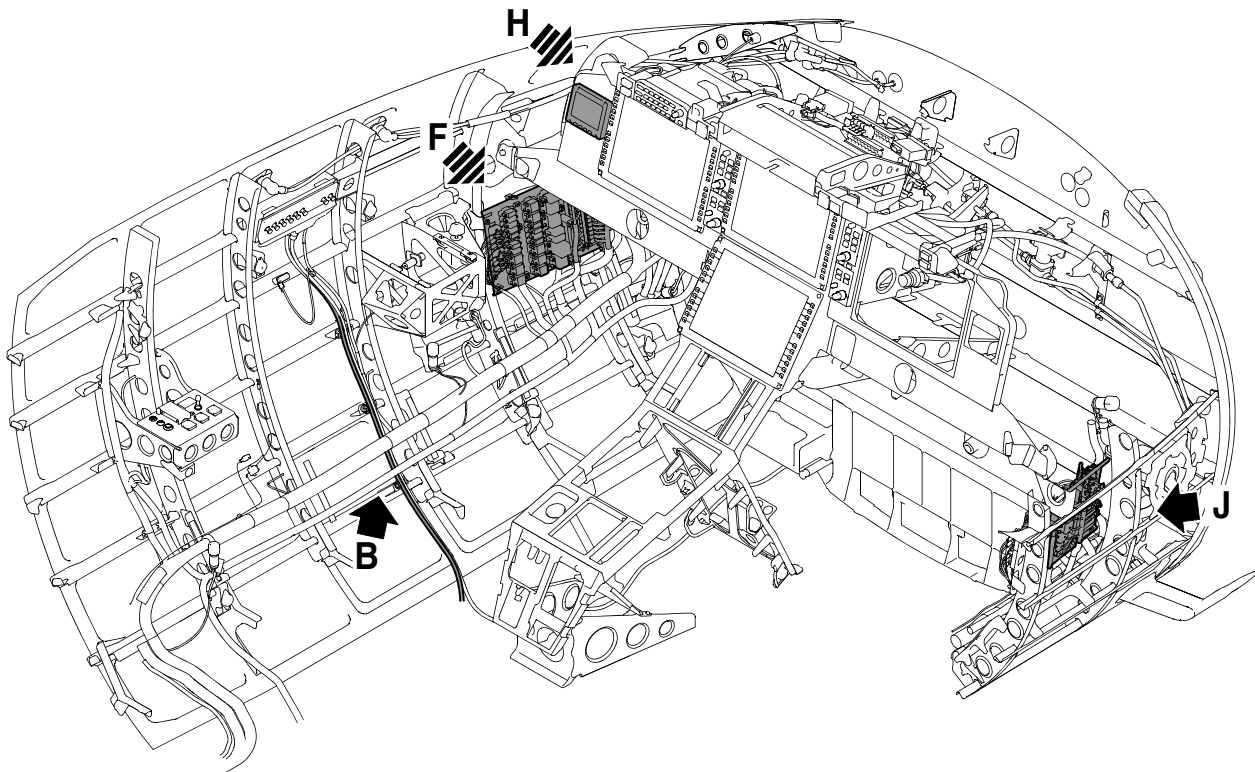
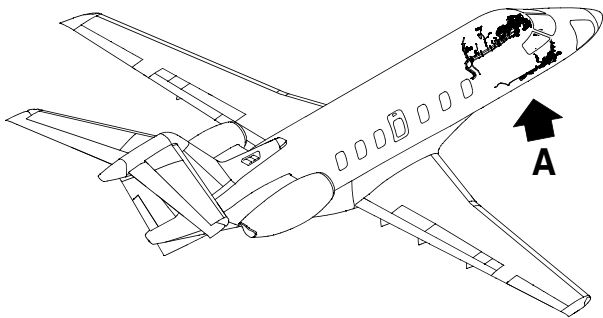


SB 3527

Improvements to the electrical harness installation - Nose bay
Figure 1 (Sheet 4 of 5)

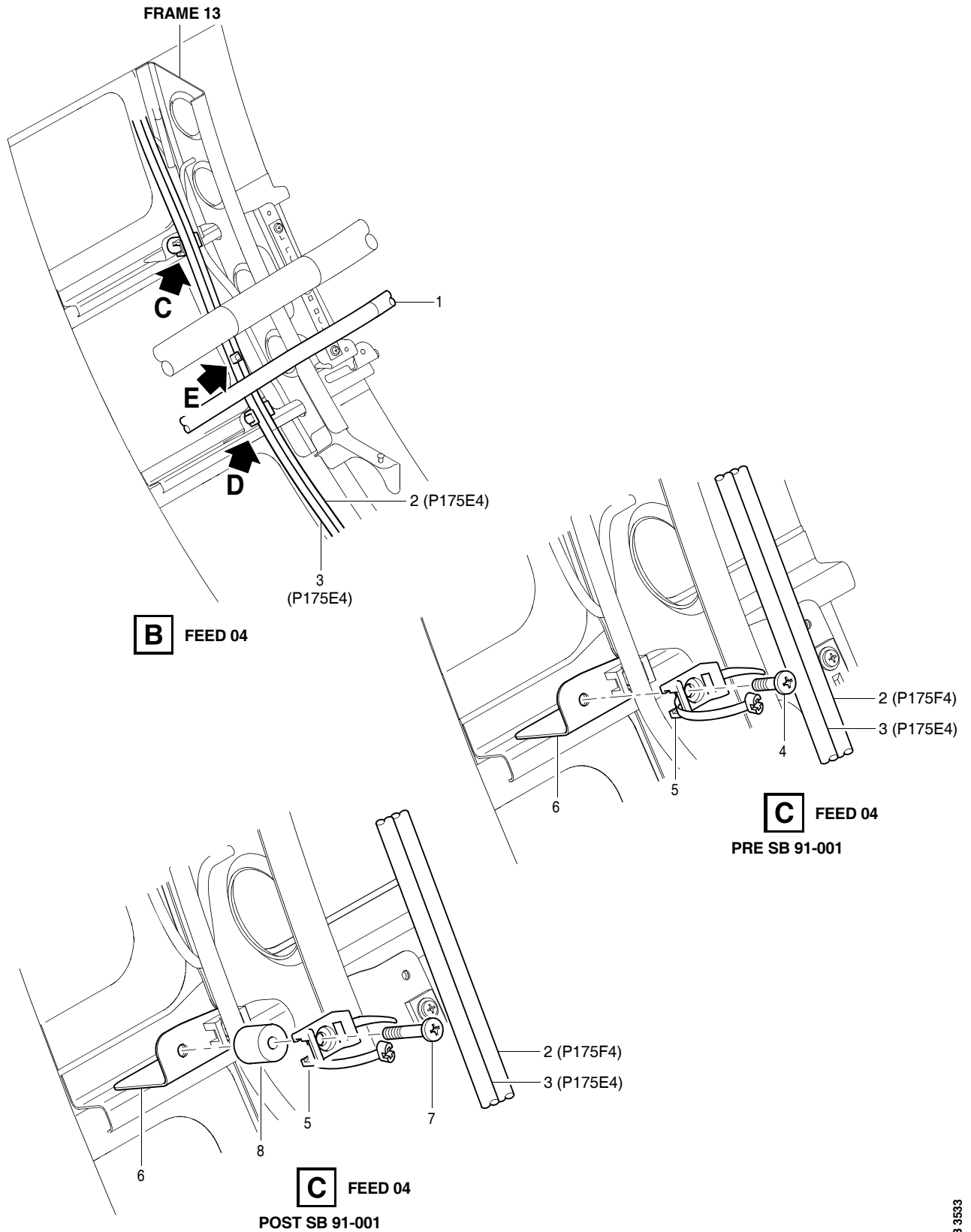


Improvements to the electrical harness installation - Nose bay
Figure 1 (Sheet 5 of 5)

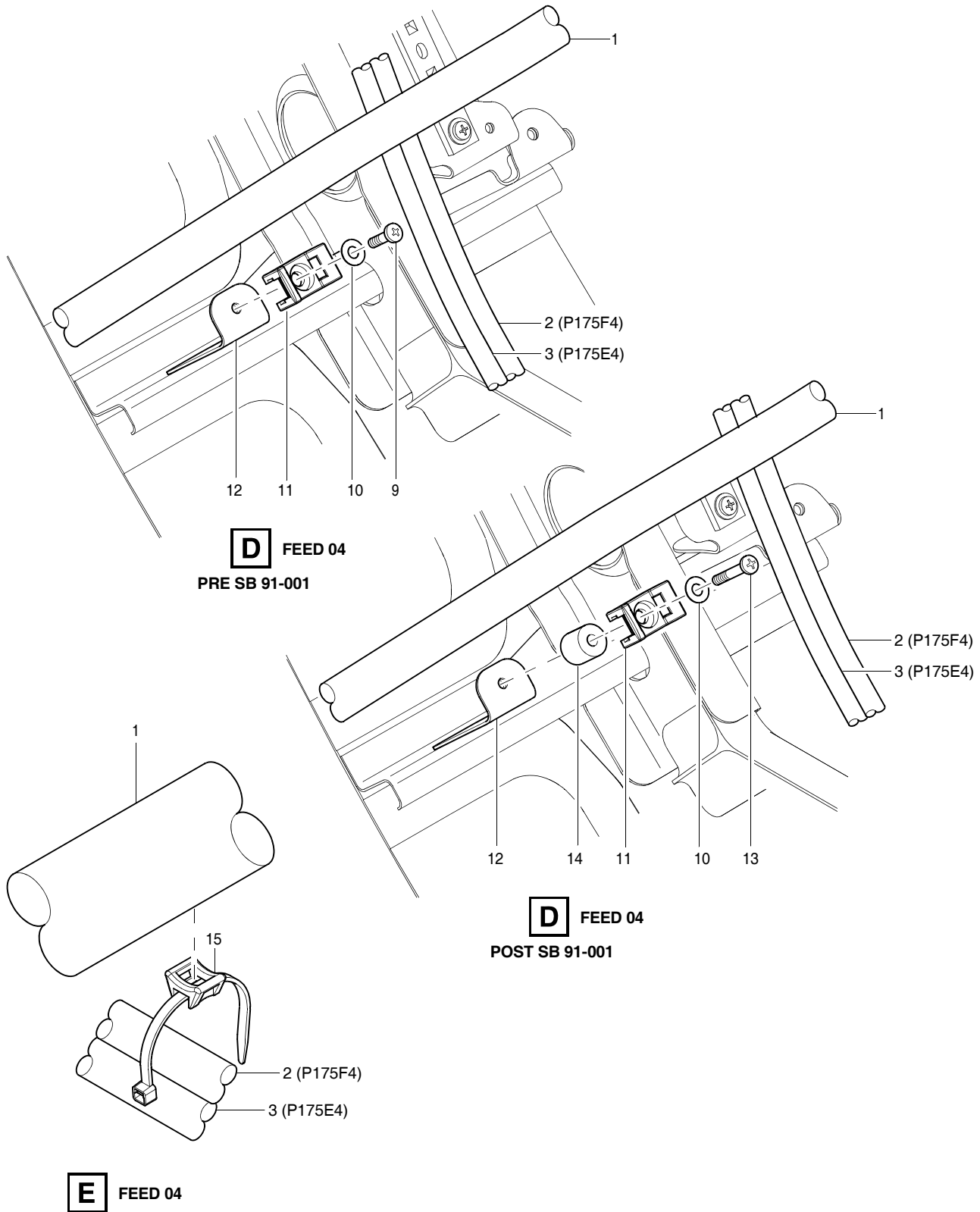


A

Improvements to the electrical harness installation - Cockpit
Figure 2 (Sheet 1 of 6)

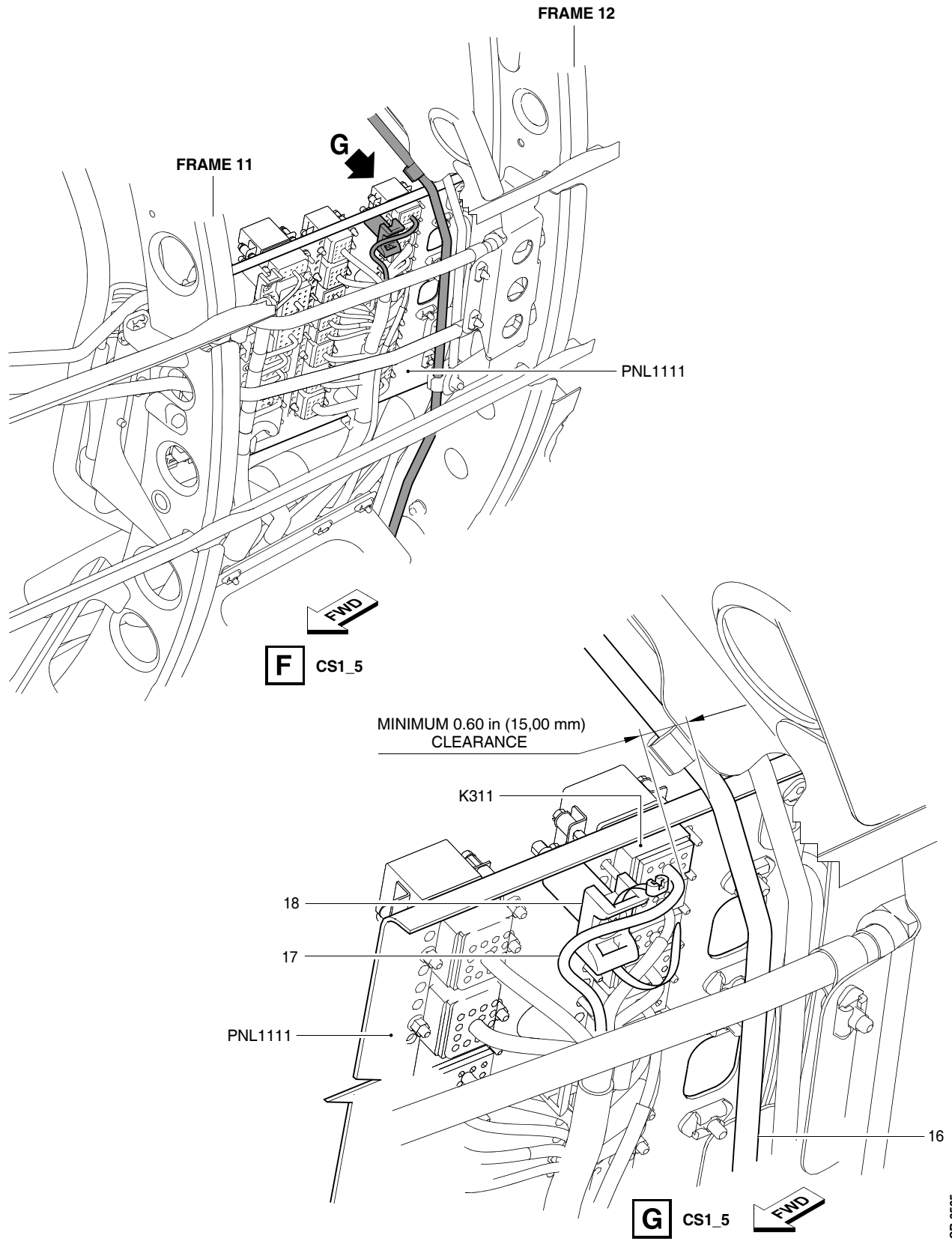


Improvements to the electrical harness installation - Cockpit
Figure 2 (Sheet 2 of 6)

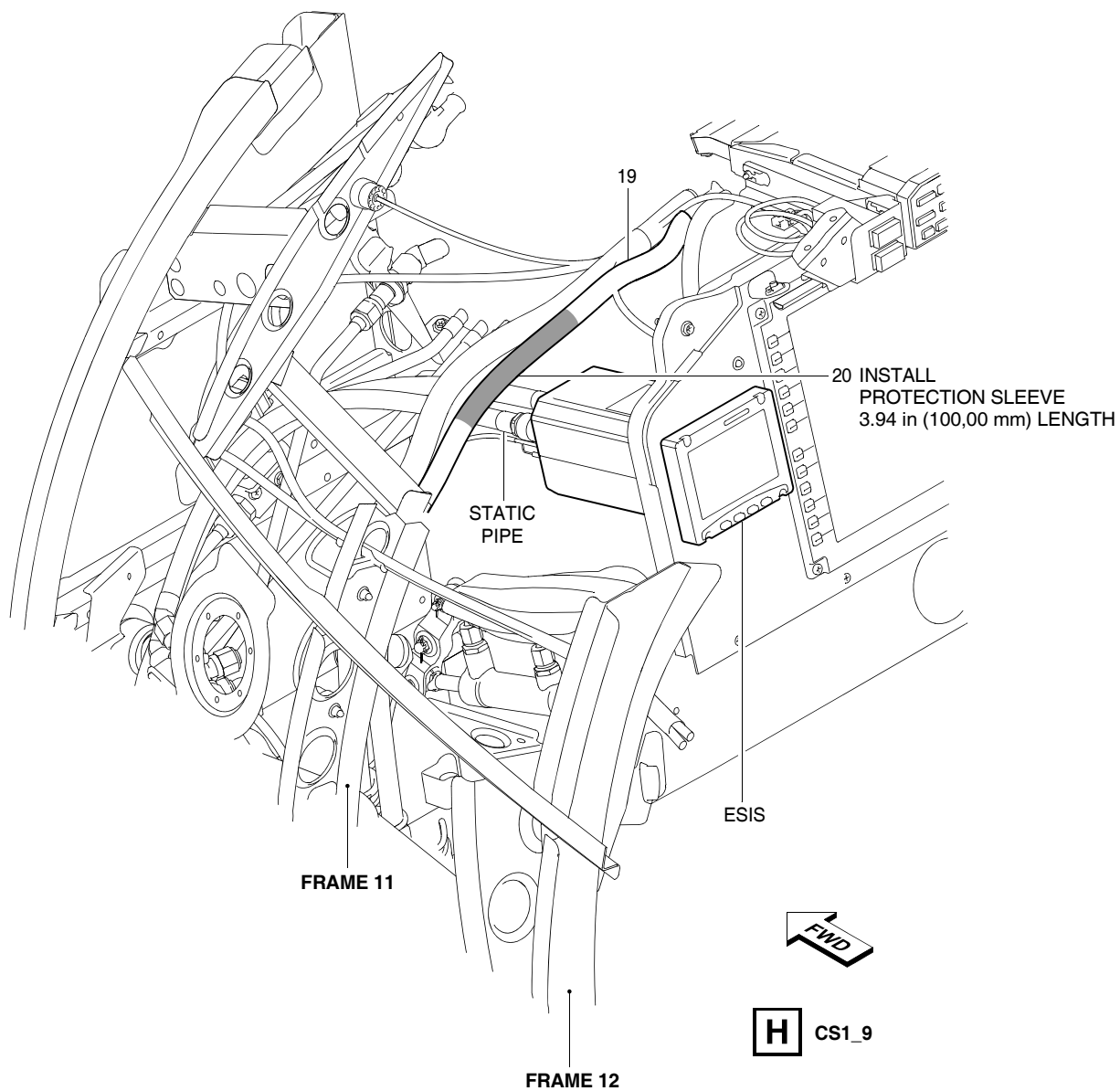


SB 3534

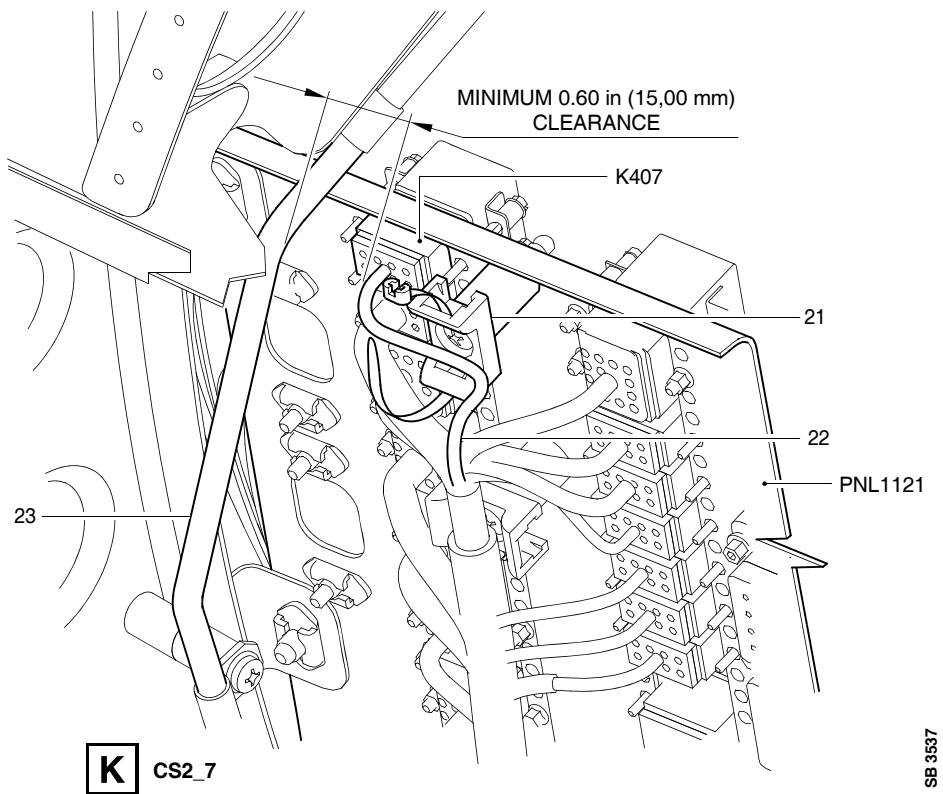
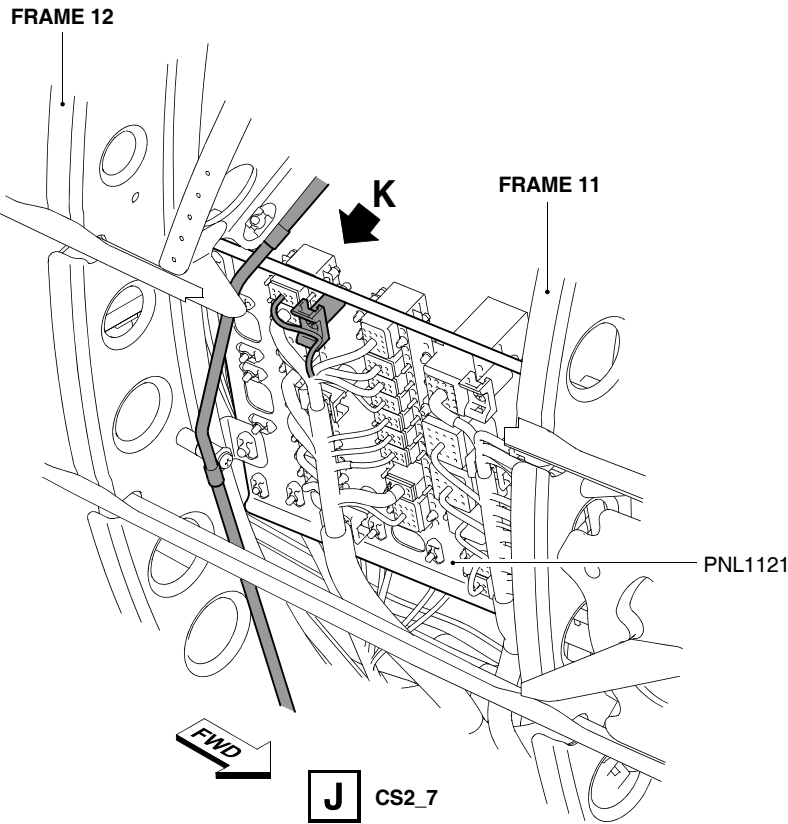
Improvements to the electrical harness installation - Cockpit
Figure 2 (Sheet 3 of 6)



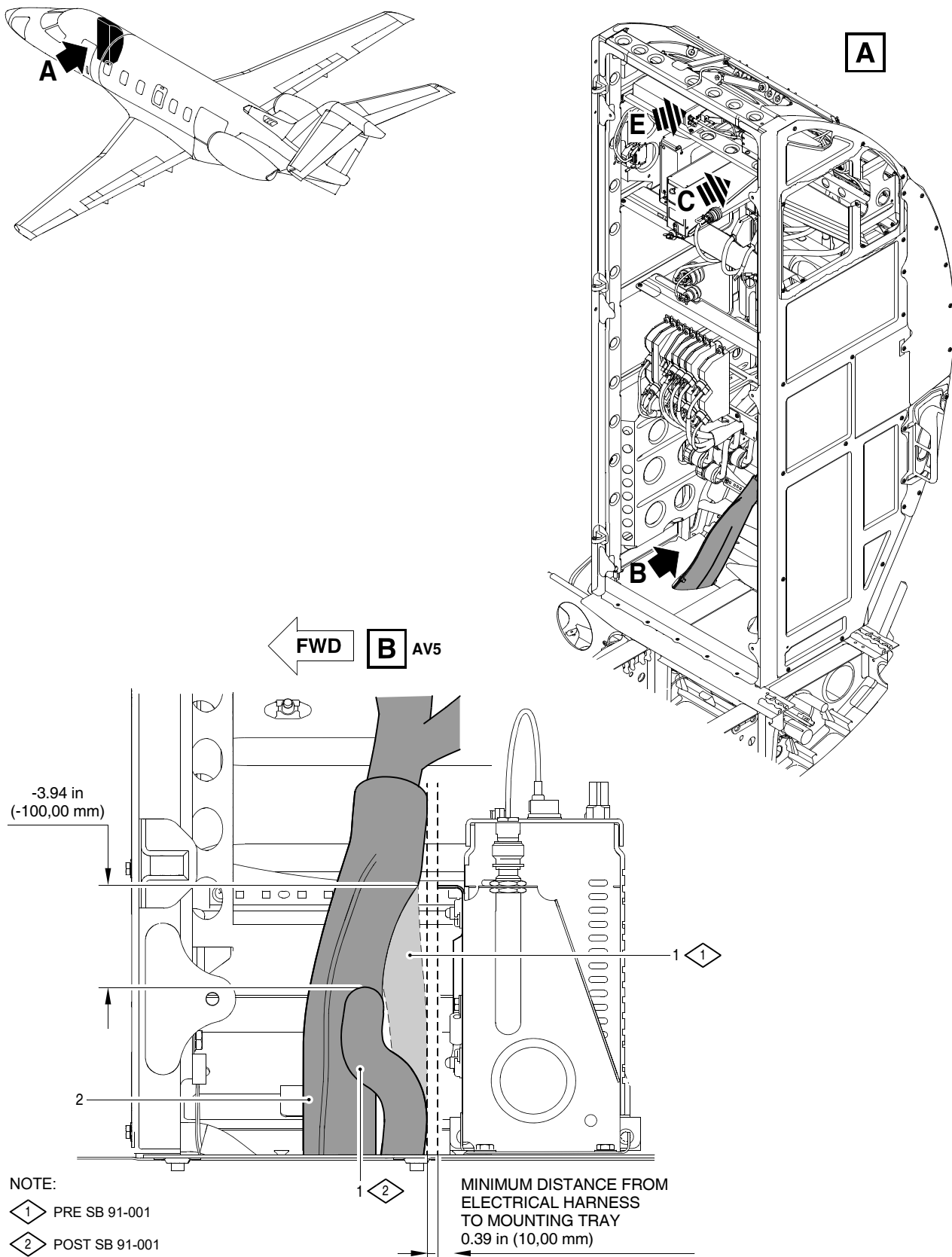
Improvements to the electrical harness installation - Cockpit
Figure 2 (Sheet 4 of 6)



Improvements to the electrical harness installation - Cockpit
Figure 2 (Sheet 5 of 6)

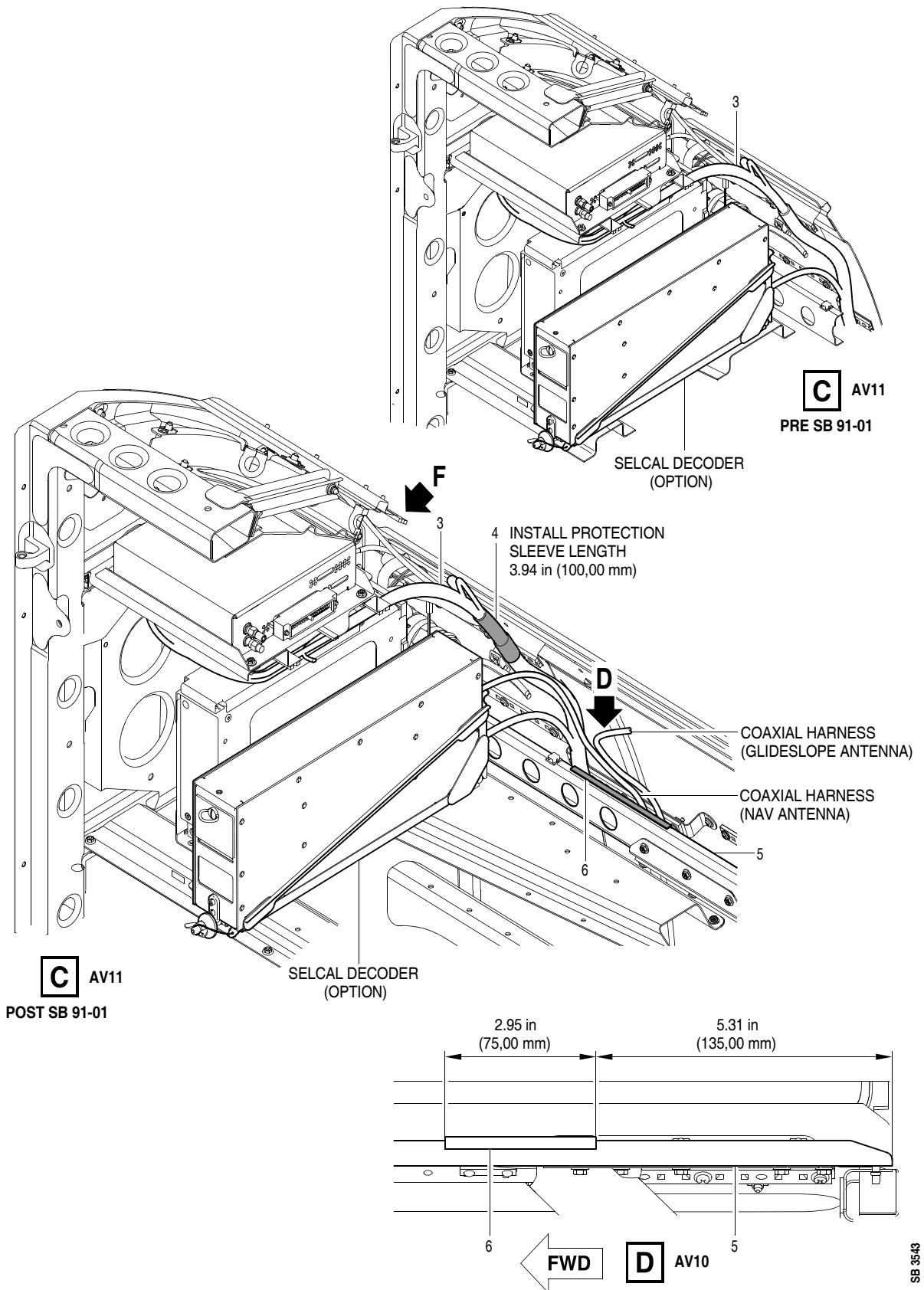


Improvements to the electrical harness installation - Cockpit
Figure 2 (Sheet 6 of 6)

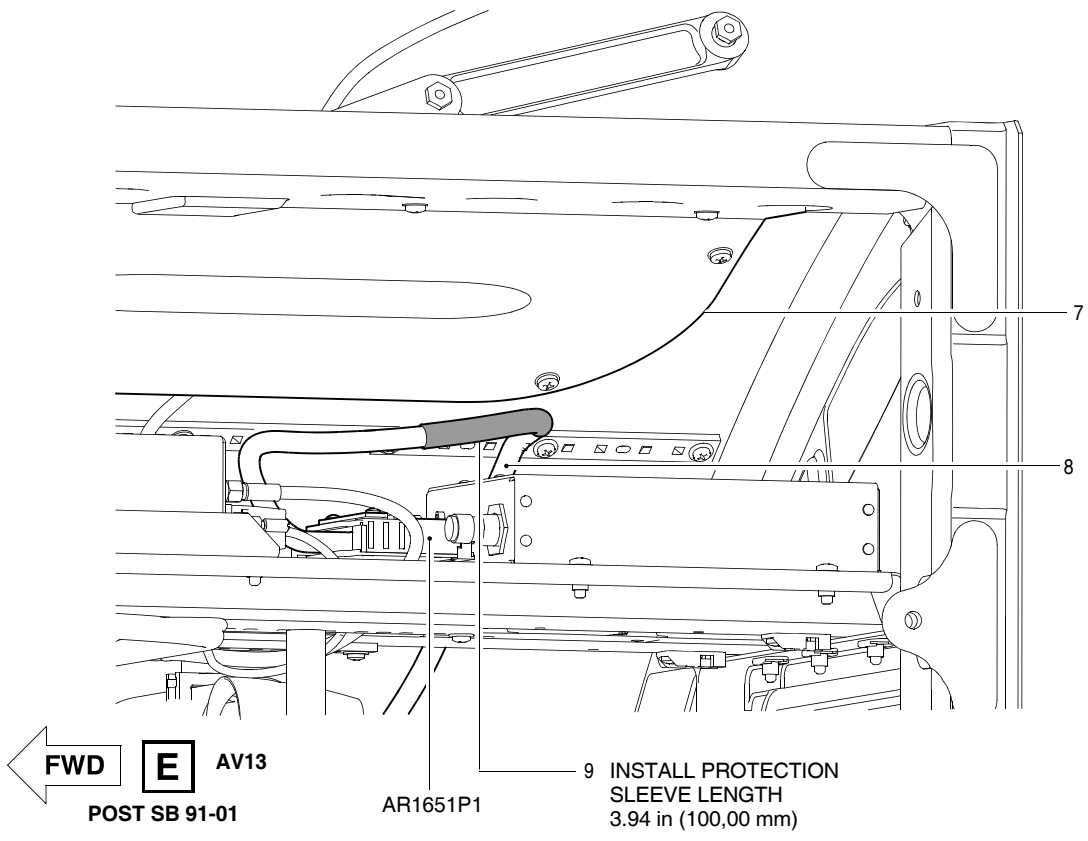
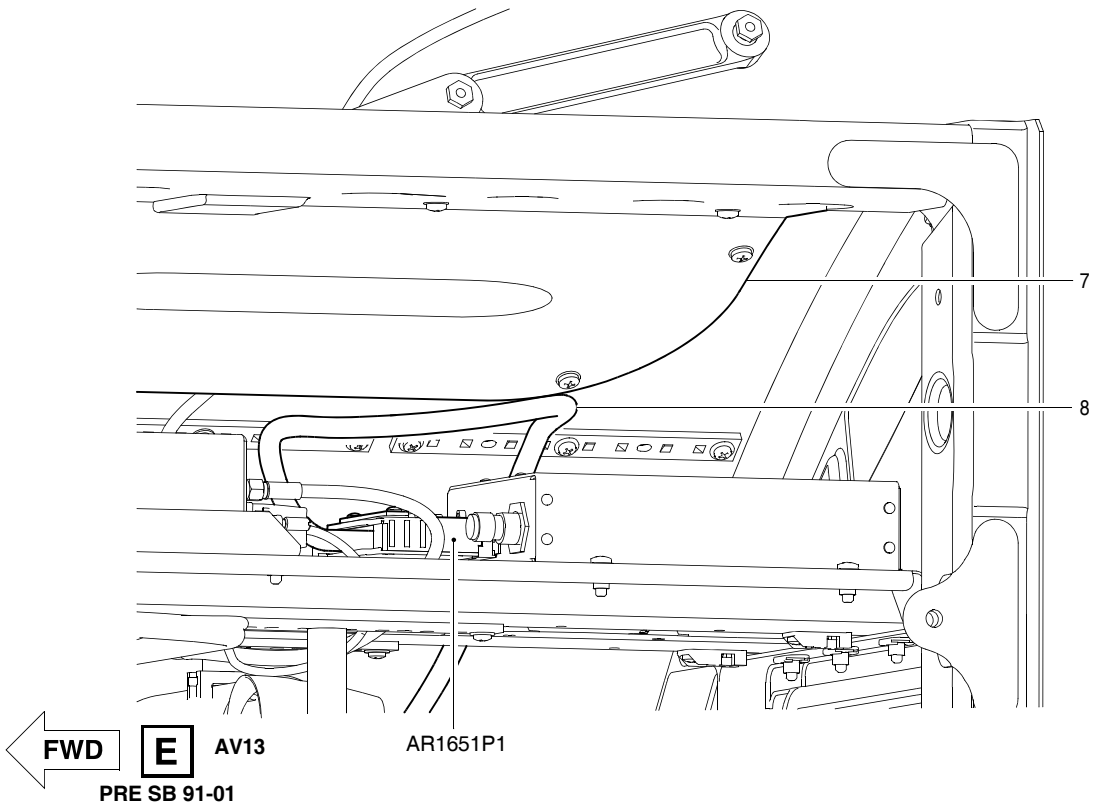


SB 3541

Improvements to the electrical harness installation - Avionics rack
Figure 3 (Sheet 1 of 4)

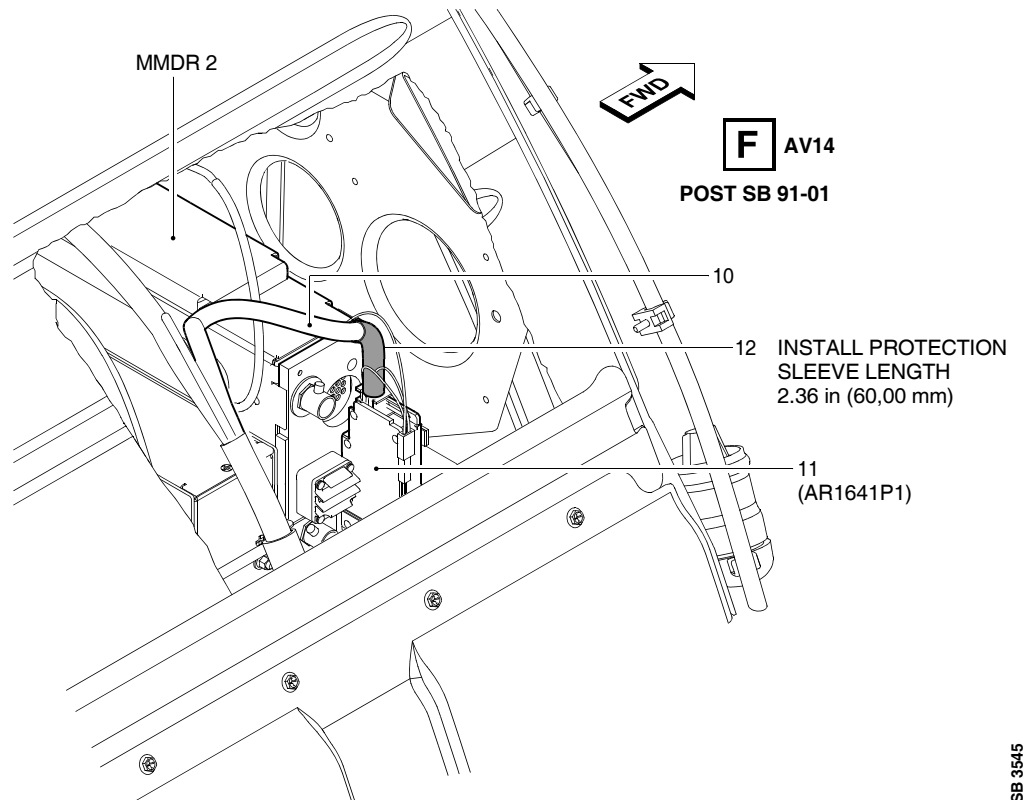
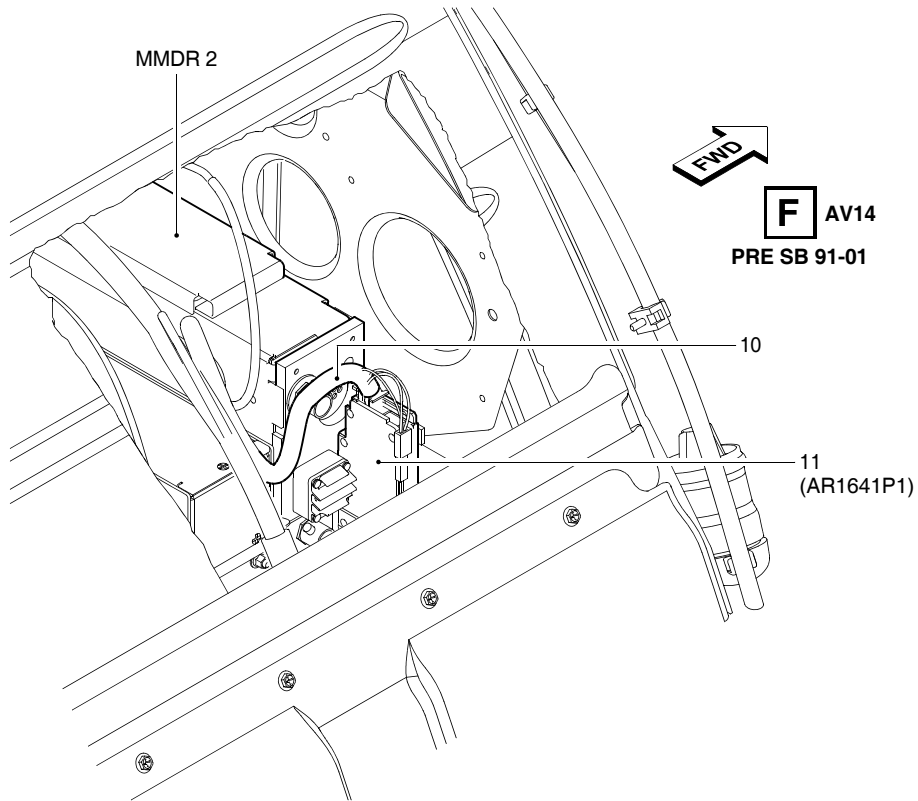


Improvements to the electrical harness installation - Avionics rack
Figure 3 (Sheet 2 of 4)

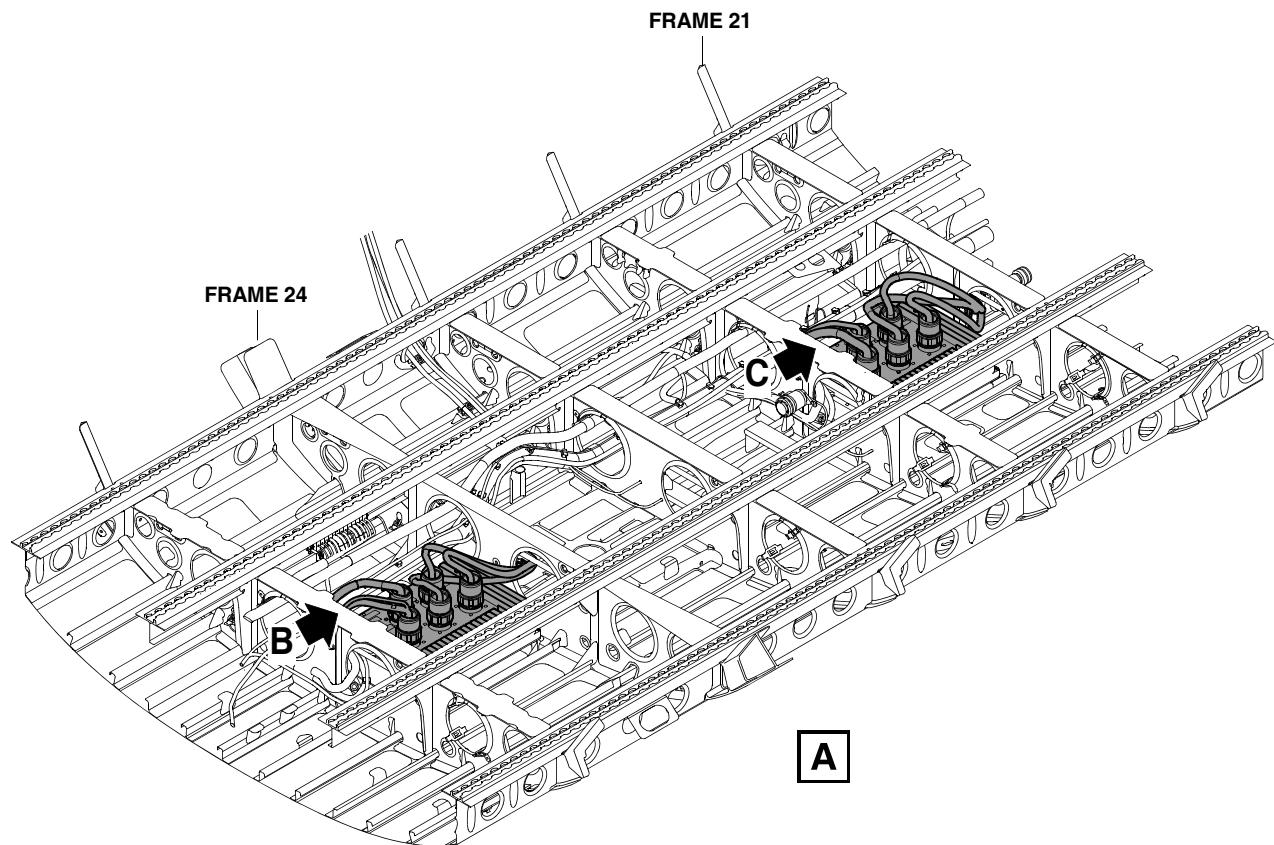
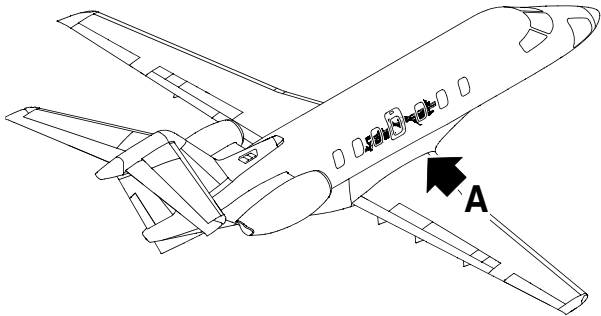


SB 3544

Improvements to the electrical harness installation - Avionics rack
Figure 3 (Sheet 3 of 4)

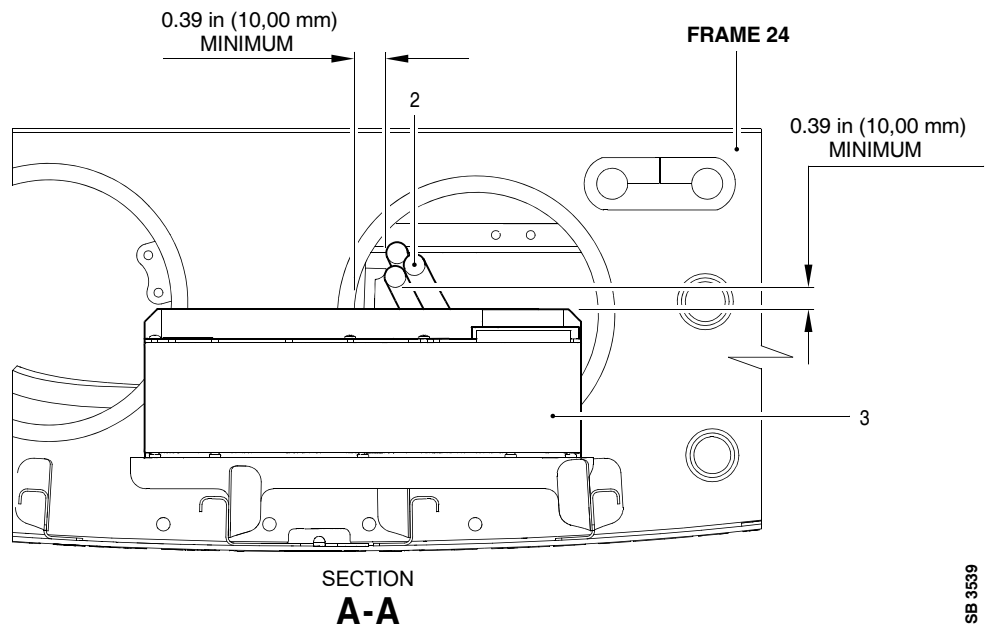
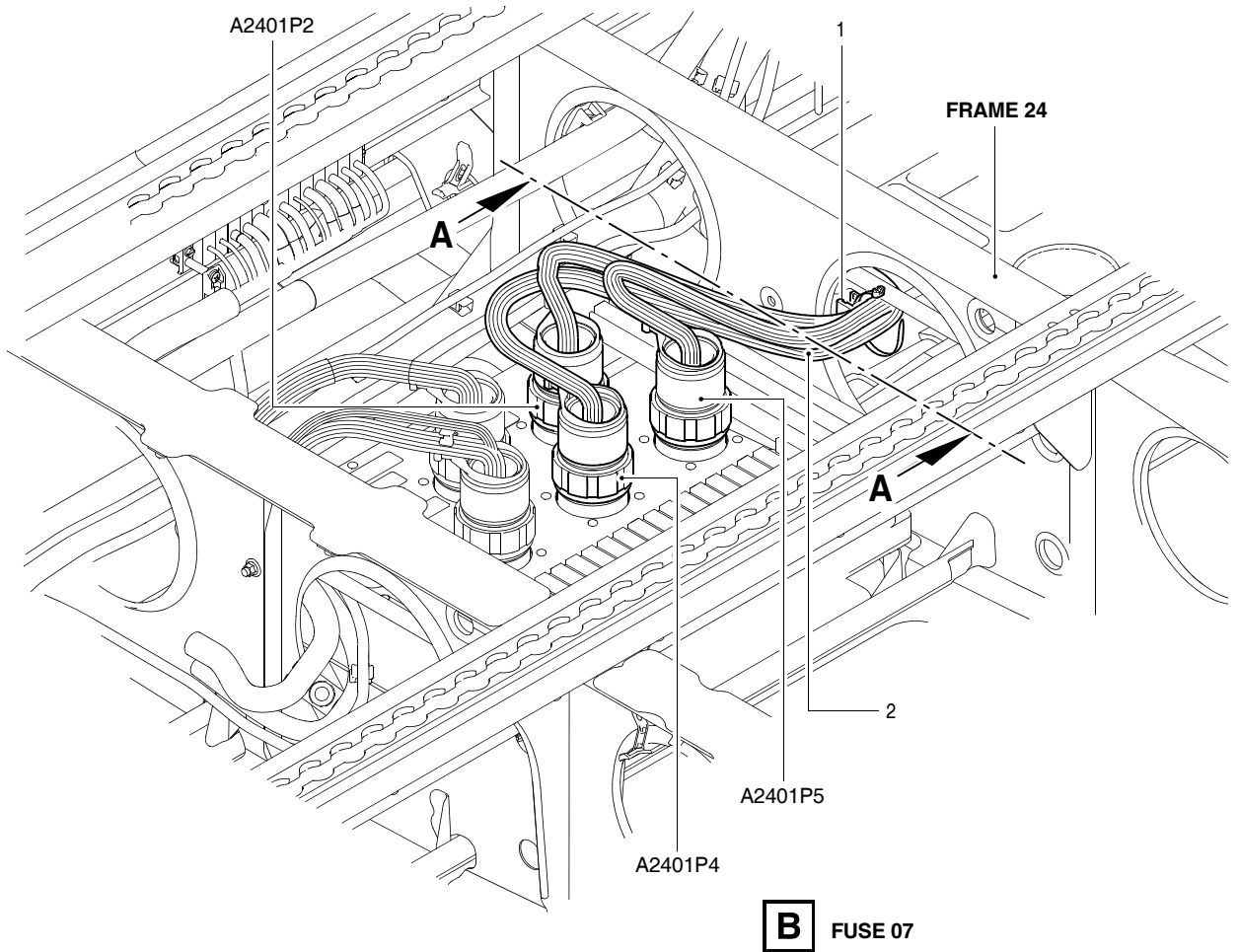


Improvements to the electrical harness installation - Avionics rack
Figure 3 (Sheet 4 of 4)

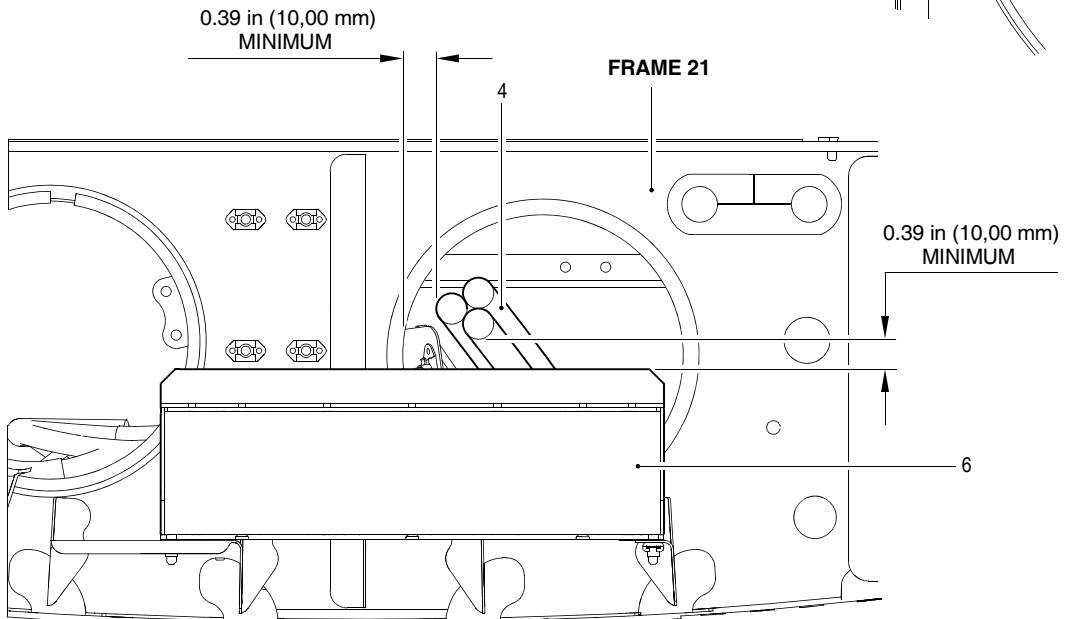
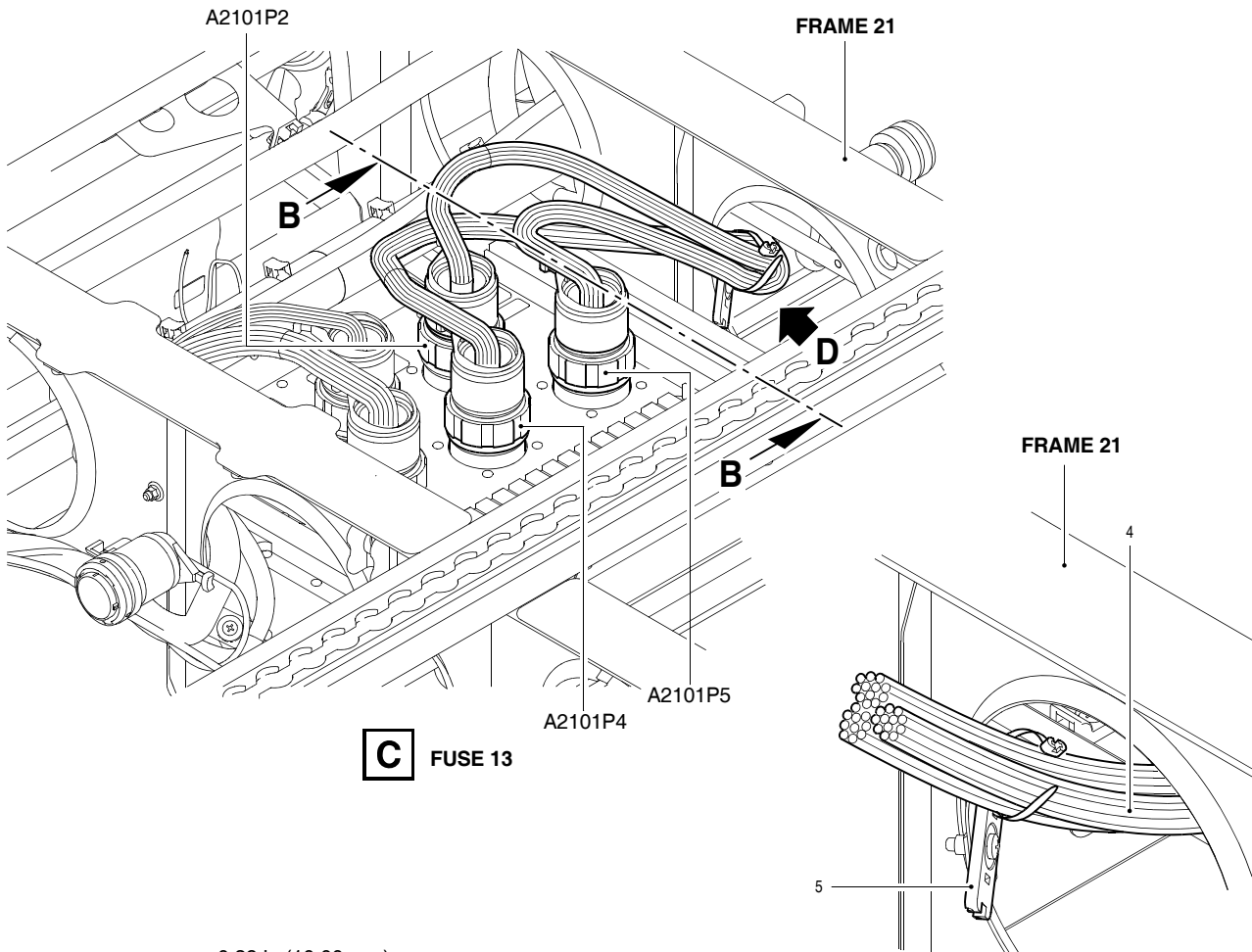


SB 3538

Improvements to the electrical harness installation - Fuselage
Figure 4 (Sheet 1 of 3)



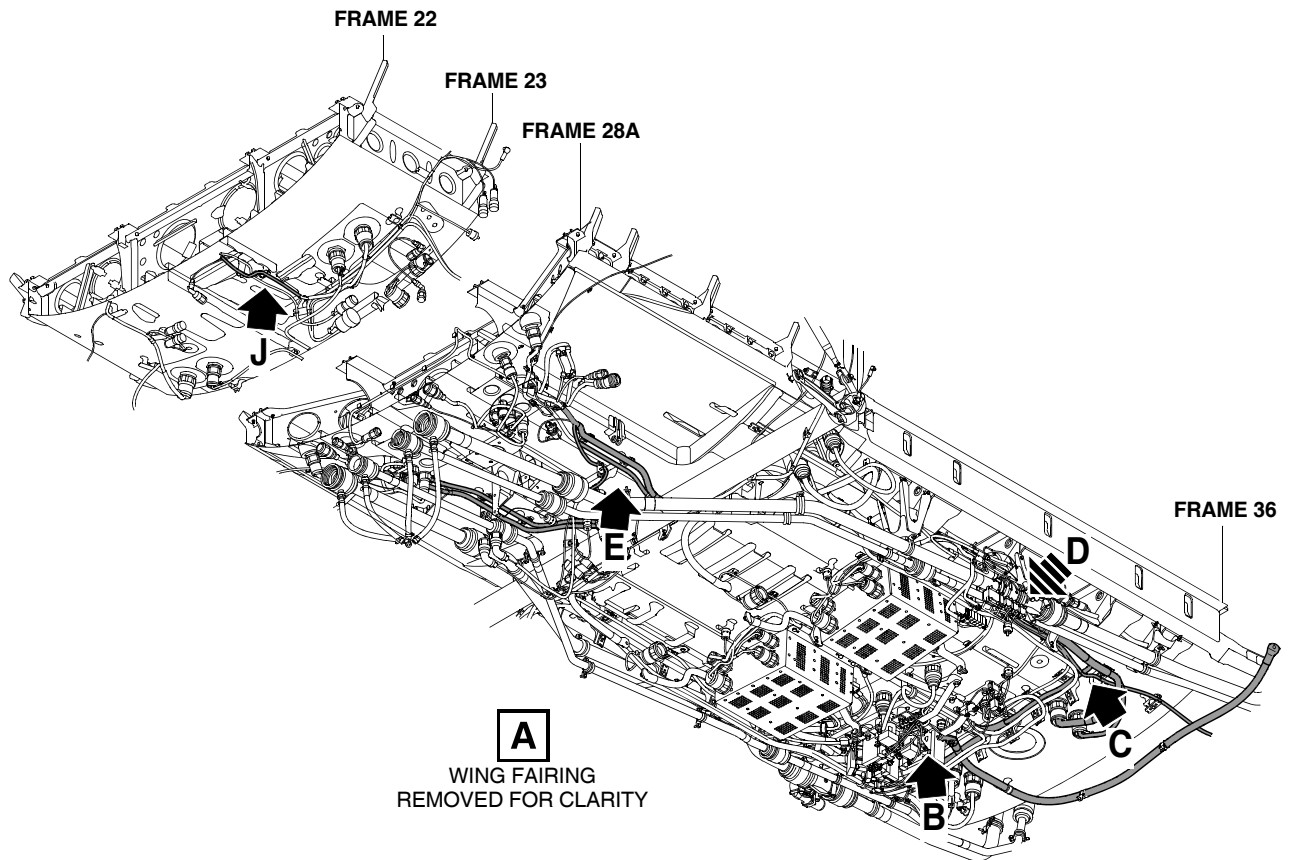
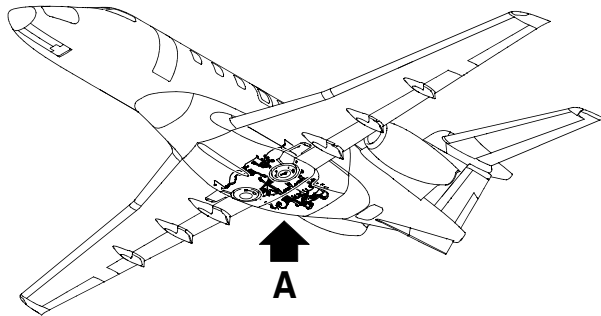
Improvements to the electrical harness installation - Fuselage
Figure 4 (Sheet 2 of 3)



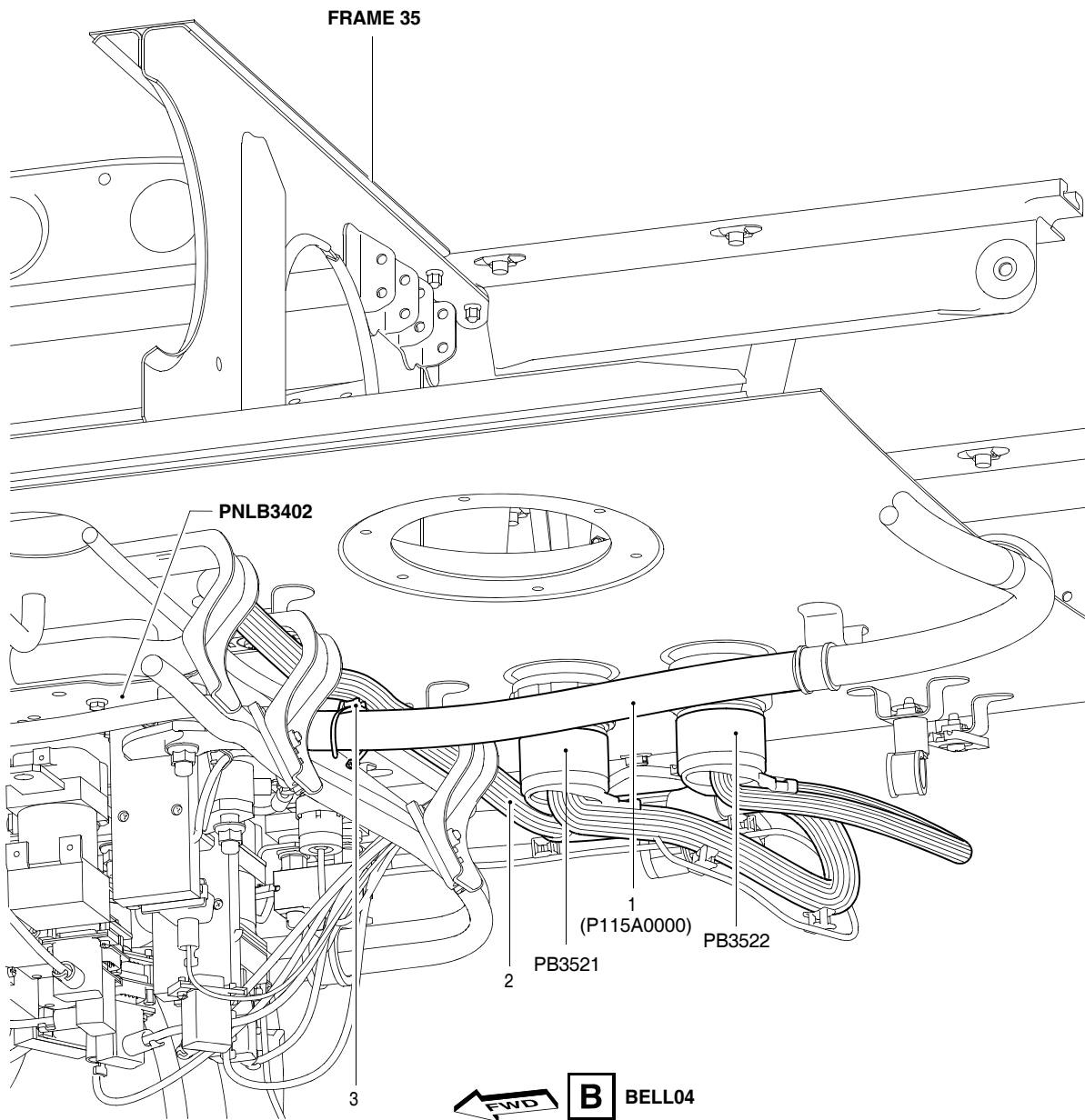
SECTION
B-B

Improvements to the electrical harness installation - Fuselage
Figure 4 (Sheet 3 of 3)

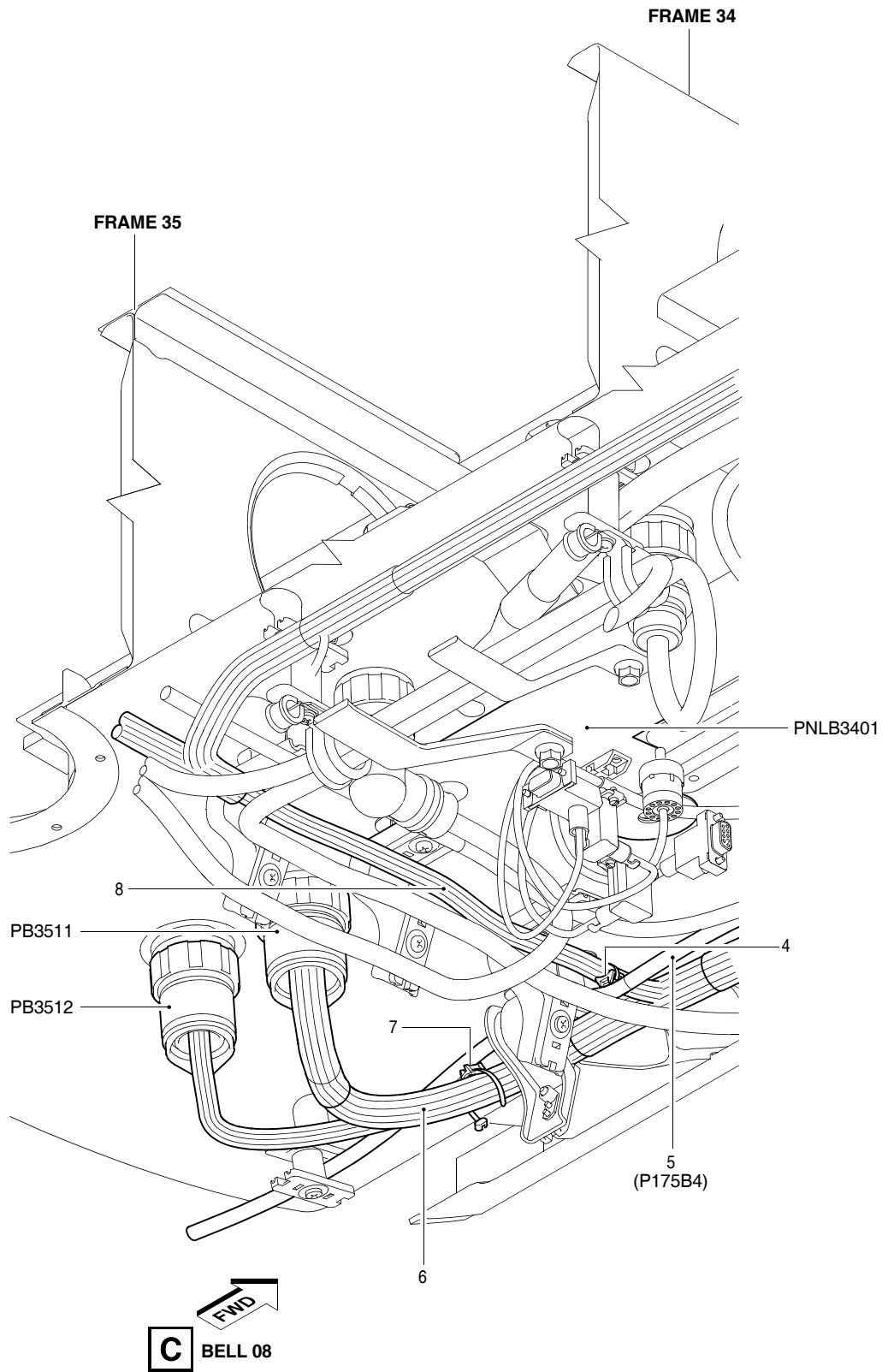
SB 3538



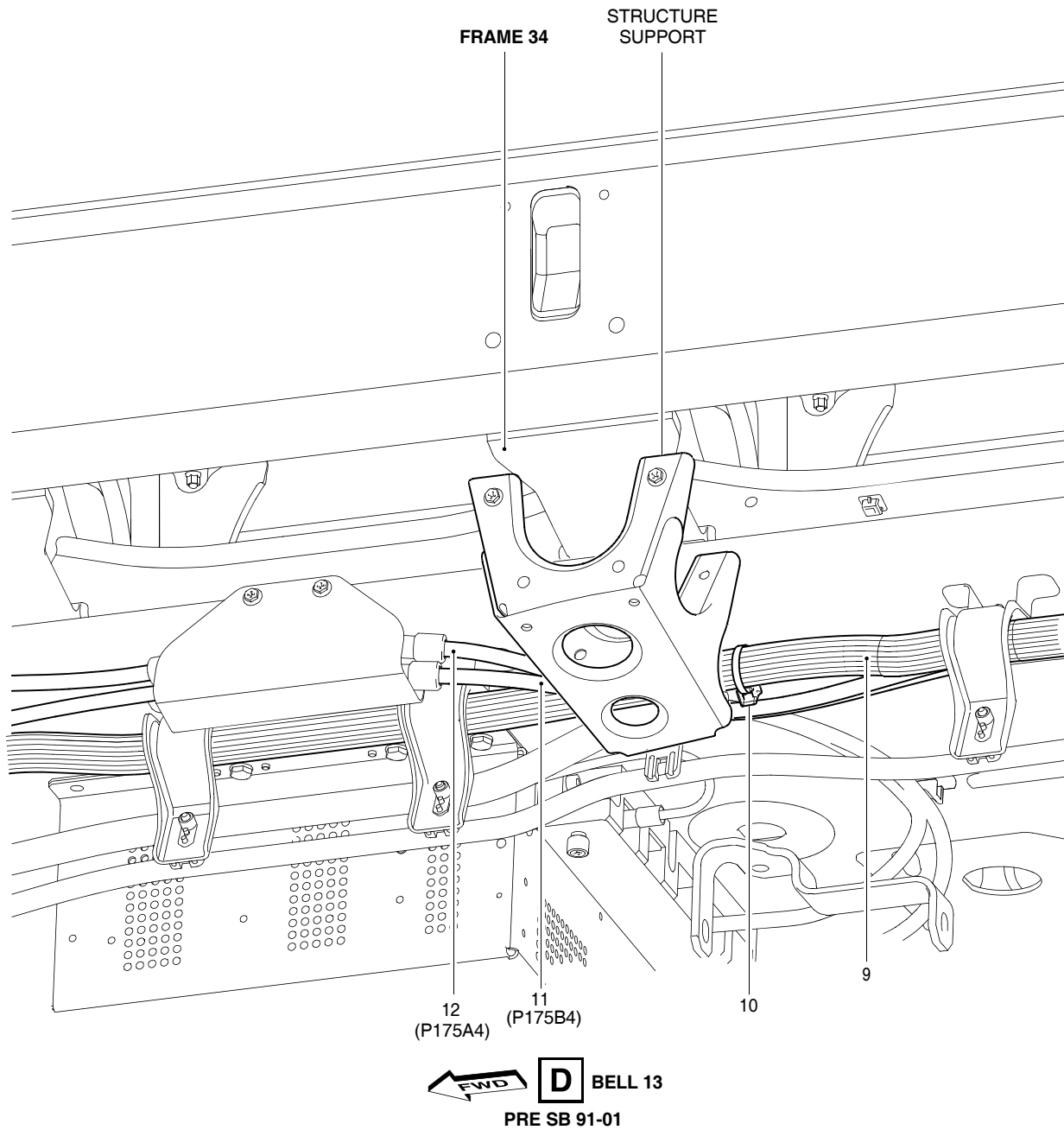
Improvements to the electrical harness installation - Wing fairing
Figure 5 (Sheet 1 of 9)



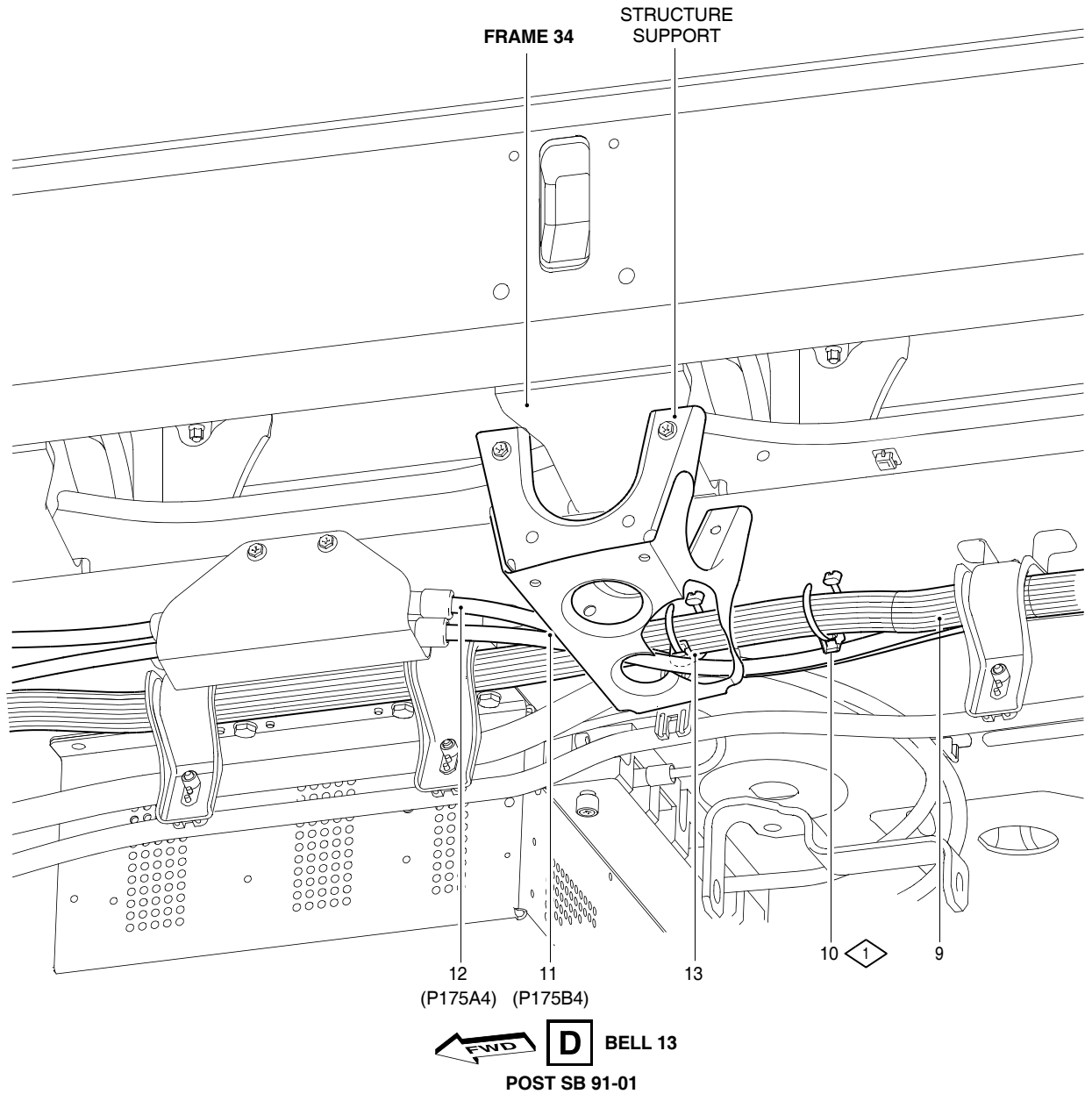
Improvements to the electrical harness installation - Wing fairing
Figure 5 (Sheet 2 of 9)



Improvements to the electrical harness installation - Wing fairing
Figure 5 (Sheet 3 of 9)



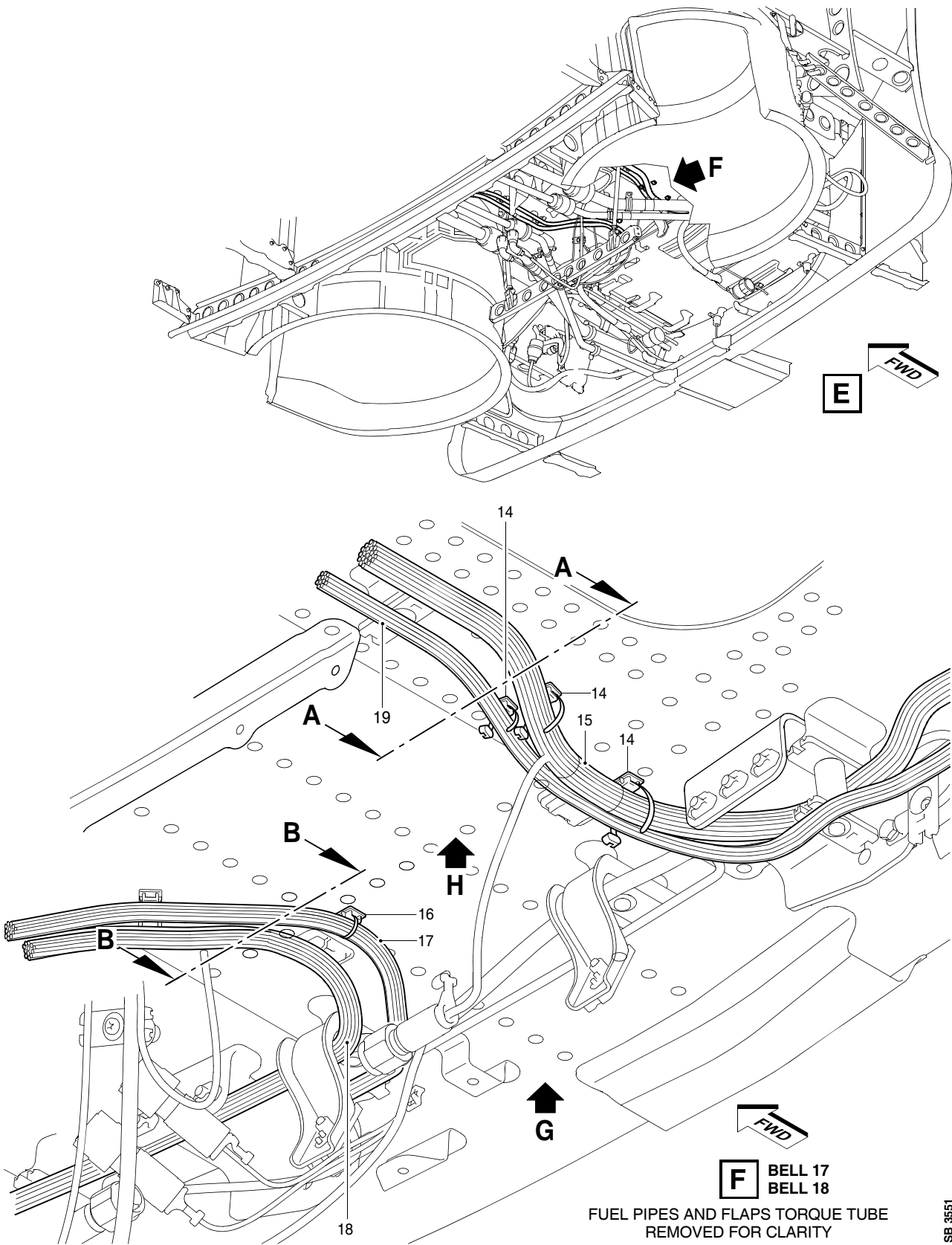
Improvements to the electrical harness installation - Wing fairing
Figure 5 (Sheet 4 of 9)



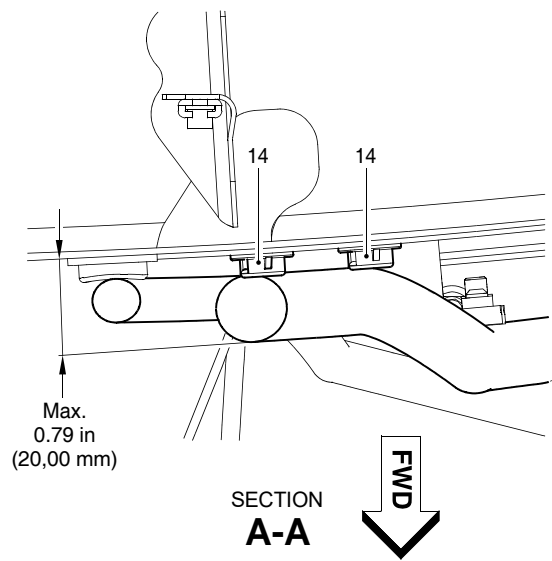
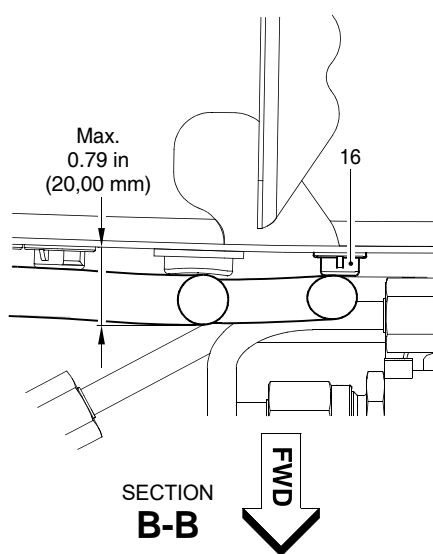
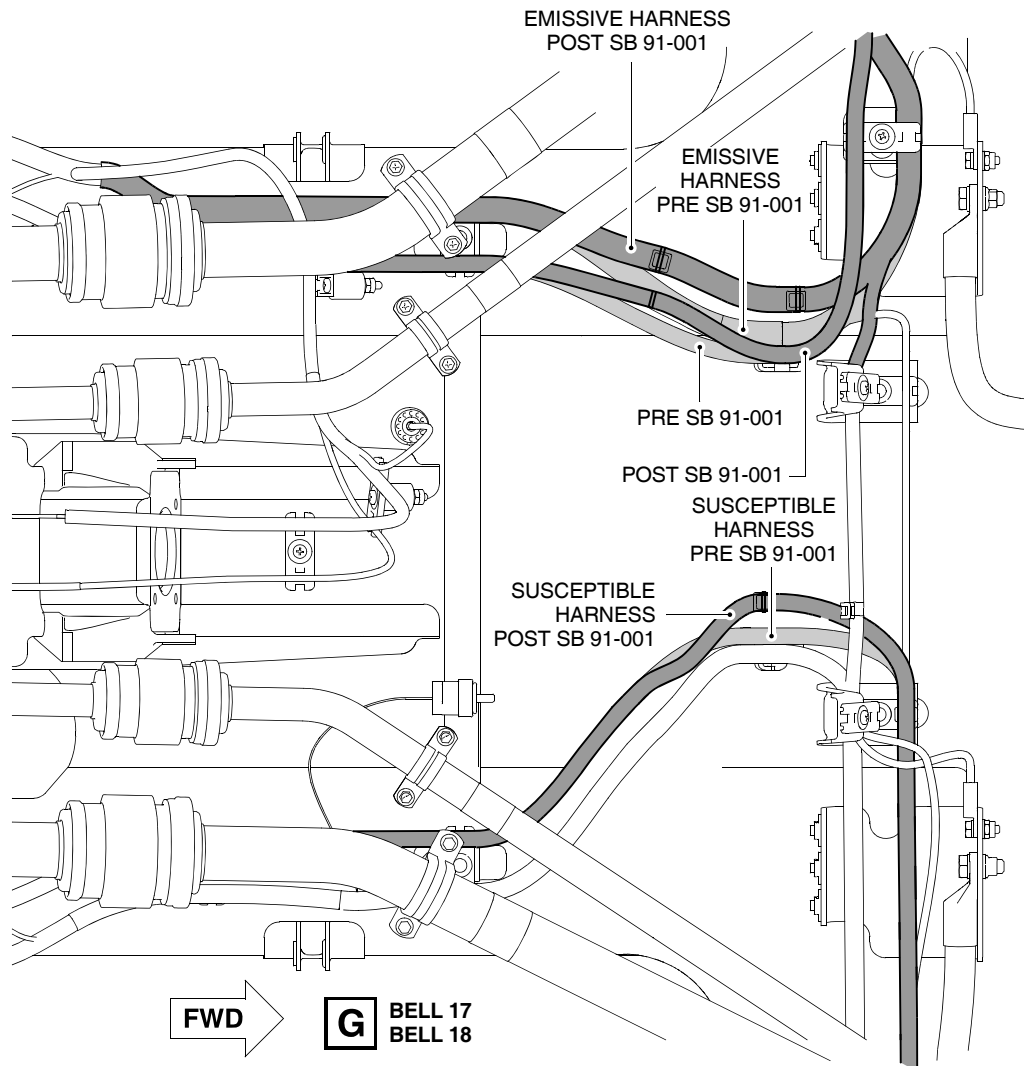
NOTE:

1 NEW INSTALLATION POSITION

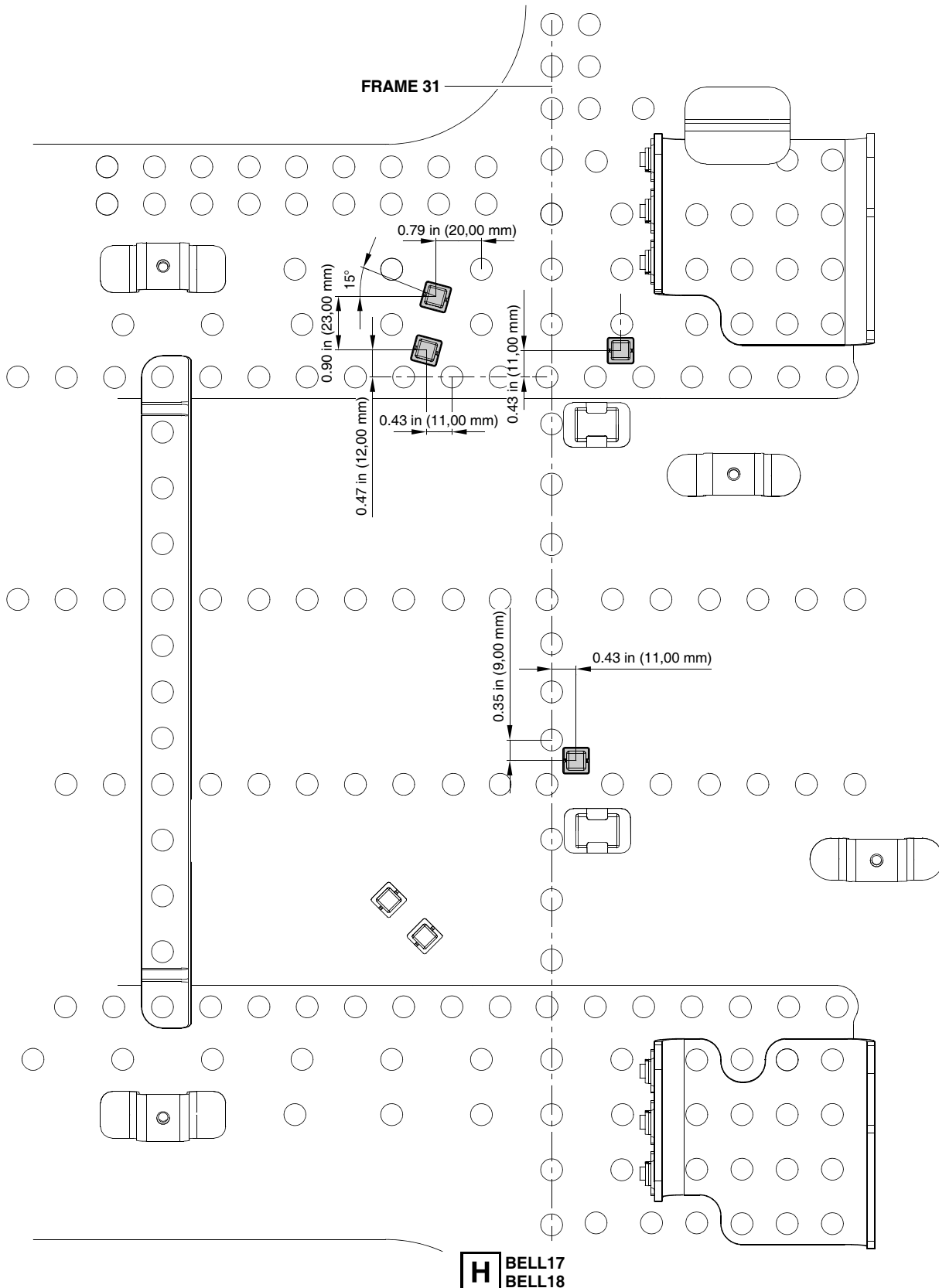
Improvements to the electrical harness installation - Wing fairing
Figure 5 (Sheet 5 of 9)



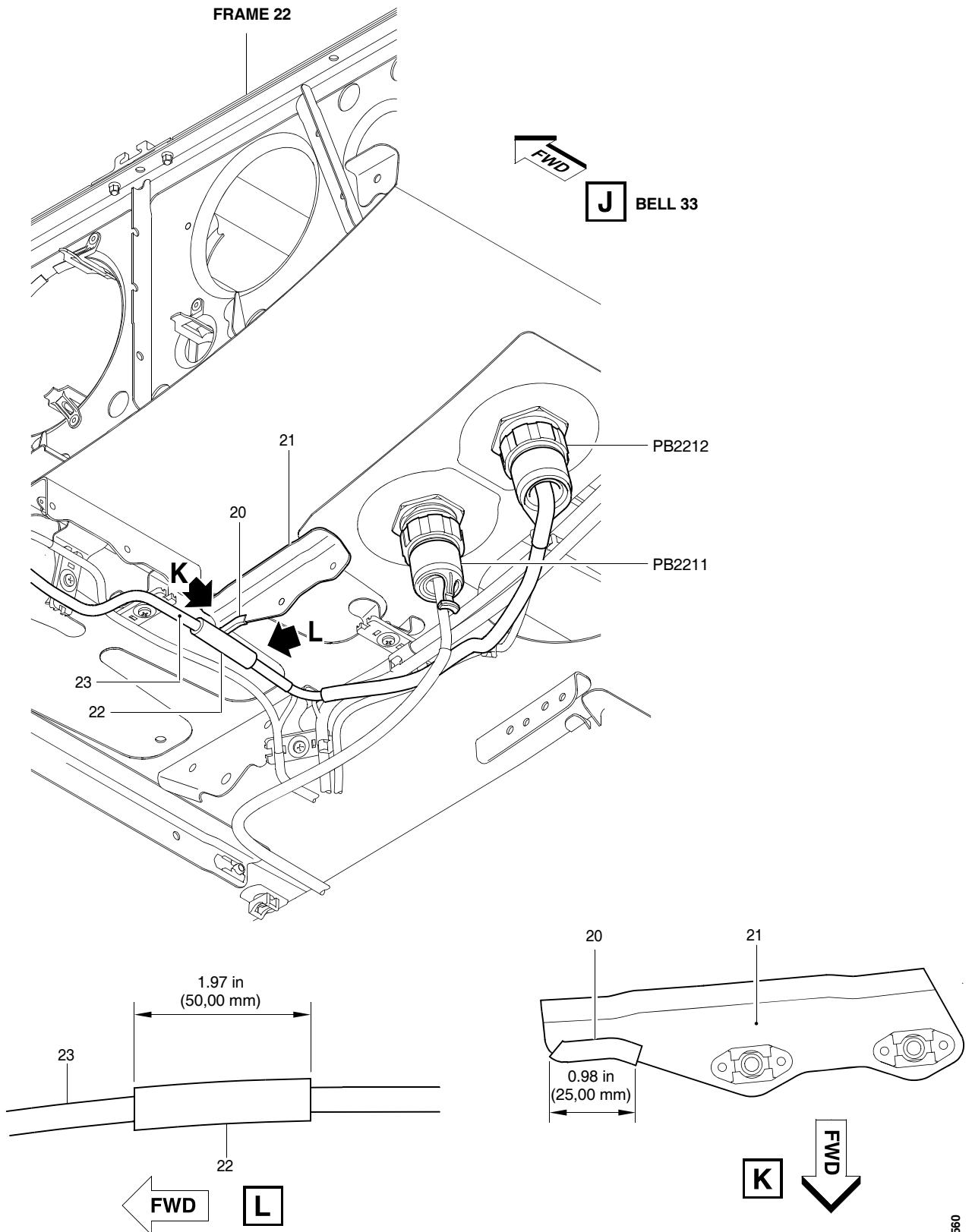
Improvements to the electrical harness installation - Wing fairing
Figure 5 (Sheet 6 of 9)



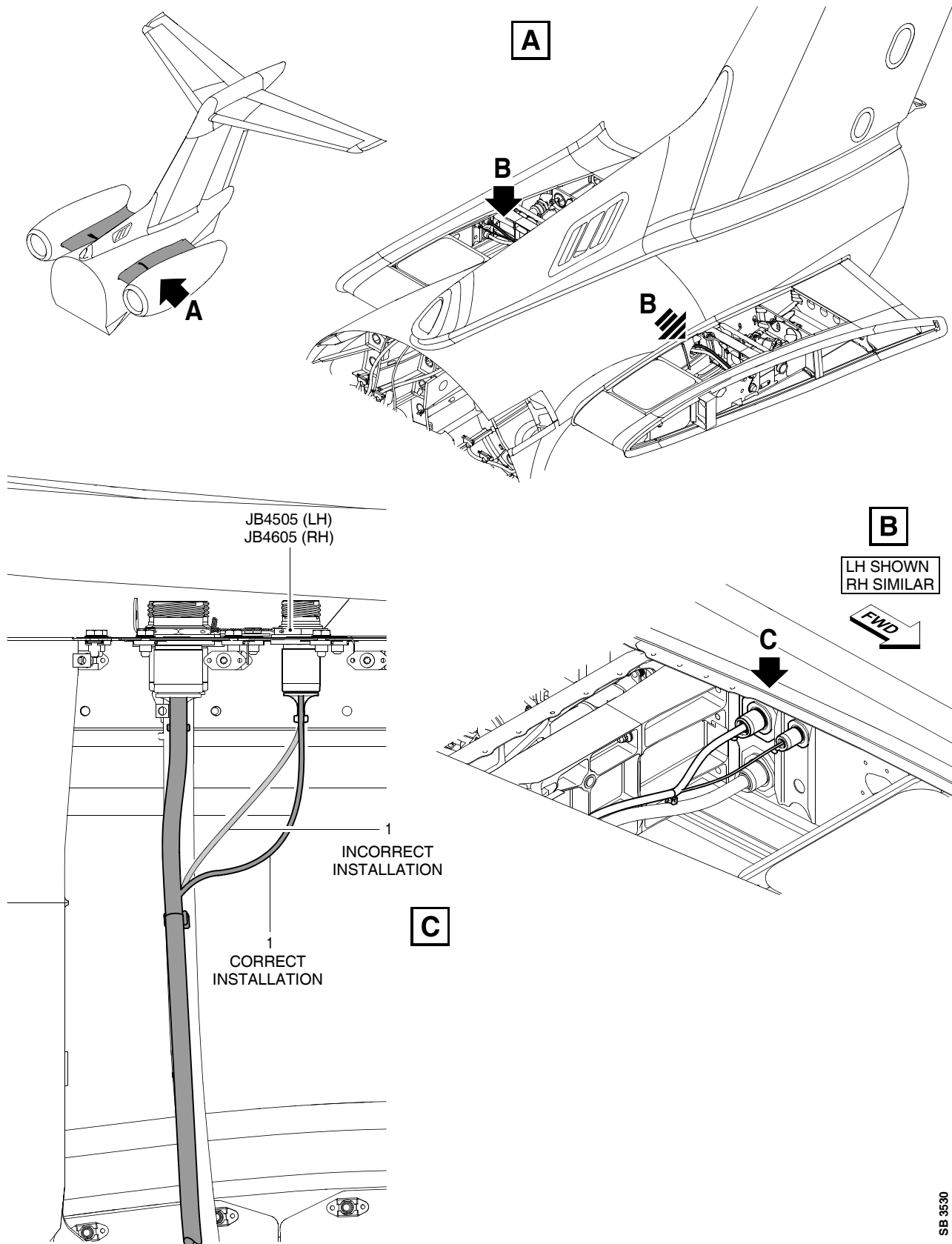
Improvements to the electrical harness installation - Wing fairing
Figure 5 (Sheet 7 of 9)



Improvements to the electrical harness installation - Wing fairing
Figure 5 (Sheet 8 of 9)



Improvements to the electrical harness installation - Wing fairing
Figure 5 (Sheet 9 of 9)



Improvements to the electrical harness installation - Rear fuselage
Figure 6

SB 3530